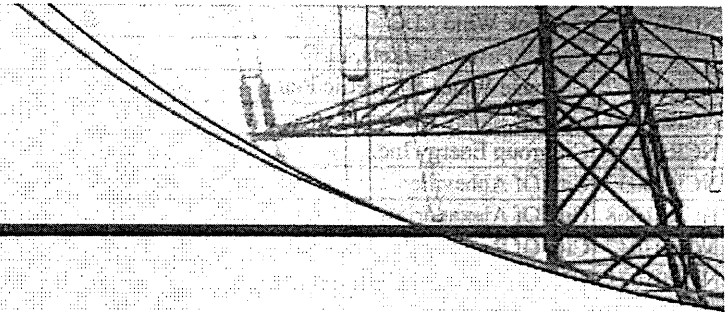




**NORTH AMERICAN ELECTRIC
RELIABILITY CORPORATION**



NERC Compliance Registry Matrix as of 4/26/2011

NCR ID#	Entity Name	Region	JRO/CFR	Jurisdiction	BA	DP	GO	GOP	IA	LSE	PA	PSE	RC	RP	RSG	TO	TOP	TP	TSP
NCR01055	AES Shady Point, LLC	SPP		United States			GO												
NCR01056	American Electric Power Service Corp. As Agent For Public Svc. Co. Of Oklahoma & SW Ele Pwr Co.	SPP		United States	BA	DP	GO	GOP		LSE		PSE		RP		TO	TOP	TP	
NCR03045	Aquilon Power Ltd.	SPP		Ontario								PSE							
NCR03045	Aquilon Power Ltd.	SPP		United States								PSE							
NCR01060	Arkansas Electric Coopertive Corporation	SPP		United States		DP	GO	GOP		LSE		PSE		RP		TO			
NCR06040	Blue Canyon II Windpower LLC	SPP		United States			GO	GOP											
NCR06041	Blue Canyon Windpower LLC	SPP		United States			GO	GOP											
NCR03048	Blue Canyon Windpower V, LLC	SPP		United States			GO	GOP											
NCR05160	BNP Paribas Energy Trading GP	SPP		United States								PSE							
NCR01061	Board Of Public Utilities (Kansas City KS)	SPP		United States	BA	DP	GO	GOP		LSE		PSE		RP		TO	TOP	TP	
NCR10319	Board Of Public Utilities, City Of McPherson, Kansas	SPP		United States		DP	GO	GOP		LSE						TO			
NCR01062	Borger Energy Associates, LP	SPP		United States			GO												
NCR00005	BP Energy Company	SPP		United States								PSE							
NCR00006	Calpine Corporation	SPP		United States			GO												
NCR00007	Calpine Energy Services	SPP		United States				GOP				PSE							

Régie de l'énergie
 DOSSIER: R. 3669-2008 Phase 2
 DÉPOSÉE EN AUDIENCE
 Date: 9/05/2011
 Pièces n°: 13-23 en liane

NCR10399	CAMS New Mexico, LLC	SPP	United States																		
NCR05059	Caprock Wind LLC	SPP	United States			GO	GOP														
NCR01066	Cargill Power Markets, LLC	SPP	United States								PSE										
NCR01067	Carthage Water & Electric Plant	SPP	United States		DP				LSE												
NCR06043	Central Valley Electric Cooperative, Inc.	SPP	United States		DP				LSE												
NCR10055	Citigroup Energy Inc.	SPP	United States								PSE										
NCR06033	City Of Abbeville	SPP	United States		DP				LSE									TO			
NCR01068	City Of Alexandria	SPP	United States		DP	GO	GOP		LSE		PSE		RP					TO			
NCR03047	City Of Bentonville, Arkansas	SPP	United States		DP				LSE												
NCR01071	City Of Clarksdale, Mississippi	SPP	United States		DP	GO	GOP		LSE									TO			
NCR10190	City Of Gardner	SPP	United States		DP				LSE									TO			
NCR01073	City Of Malden - Board Of Public Works	SPP	United States		DP				LSE												
NCR06034	City Of Minden	SPP	United States		DP				LSE												
NCR10227	City Of Ottawa	SPP	United States		DP				LSE									TO			
NCR01081	City Utilities Of Springfield, MO	SPP	United States	BA	DP	GO	GOP		LSE				RP					TO	TOP	TP	
NCR01082	City Water & Light - Jonesboro, Arkansas	SPP	United States		DP				LSE		PSE										
NCR01083	Cleco Corporation	SPP	United States	BA	DP	GO	GOP	IA	LSE		PSE		RP					TO	TOP	TP	TSP
NCR10302	Cloud County Wind Farm, LLC,	SPP	United States			GO	GOP														
NCR08044	ConocoPhillips Company	SPP	United States								PSE										
NCR00015	Constellation Energy Commodities Group, Inc.	SPP	United States								PSE										
NCR11081	CPV Keenan II Renewable Energy Company, LLC	SPP	United States			GO	GOP														
NCR01088	Denver City Energy Associates (Mustang Station)	SPP	United States			GO															
NCR01089	Dogwood Energy, LLC	SPP	United States			GO															
NCR00760	DTE Energy Trading, Inc.	SPP	United States								PSE										
NCR01227	East Texas Electric Cooperative, Inc.	SPP	United States		DP	GO			LSE		PSE		RP					TO		TP	
NCR01092	Eastman Cogeneration Limited Partnership	SPP	United States			GO	GOP														
NCR00769	Edison Mission Marketing & Trading, Inc.	SPP	United States			GO	GOP														
NCR00505	Endure Energy, L.L.C.	SPP	United States								PSE										
NCR11083	Entergy Power Operations U.S., Inc.	SPP	United States				GOP														
NCR01095	Exelon Generation Co., LLC [PSE]	SPP	United States								PSE										

NCR06046	Farmers' Electric Cooperative, Inc. Of New Mexico	SPP		United States		DP				LSE								
NCR10312	Flat Ridge Wind Energy, LLC	SPP		United States			GO	GOP										
NCR00626	GDF SUEZ Energy Marketing NA, Inc.	SPP		United States							PSE							
NCR10020	Golden Spread Electric Cooperative, Inc.	SPP		United States		DP				LSE	PSE		RP					
NCR01101	Grand River Dam Authority	SPP		United States	BA	DP	GO	GOP		LSE	PSE		RP		TO	TOP	TP	
NCR01103	Green Country Energy, LLC	SPP		United States			GO											
NCR01104	Green Country Operating Services, LLC	SPP		United States				GOP										
NCR03046	Hope Water & Light	SPP		United States		DP				LSE					TO			
NCR10259	Iberdrola Renewables	SPP		United States			GO	GOP										
NCR01072	(Independence, Missouri)	SPP		United States	BA	DP	GO	GOP		LSE	PSE		RP		TO	TOP	TP	
NCR10400	ITC Great Plains, LLC	SPP		United States											TO			
NCR00256	J. Aron & Company	SPP		United States							PSE							
NCR10263	J.P. Morgan Ventures Energy Corporation	SPP		United States							PSE							
NCR01107	Kansas City Power & Light Company	SPP		United States	BA	DP	GO	GOP		LSE	PSE		RP		TO	TOP	TP	
NCR01109	Kansas Electric Power Cooperative, Inc.	SPP		United States						LSE			RP					
NCR10379	Kansas Energy, LLC	SPP		United States							PSE							
NCR01110	Kansas Municipal Energy Agency	SPP		United States							PSE							
NCR01058	KCPL - Greater Missouri Operations	SPP		United States	BA	DP	GO	GOP		LSE	PSE		RP		TO	TOP	TP	TSP
NCR01113	Kiowa Power Partners, LLC	SPP		United States			GO	GOP										
NCR01114	Lafayette Utilities System	SPP		United States	BA	DP	GO	GOP		LSE	PSE				TO	TOP	TP	
NCR06047	Lea County Electric Cooperative, Inc.	SPP		United States		DP				LSE					TO			
NCR10301	Lea Power Partners, LLC	SPP		United States			GO											
NCR10226	Llano Estacado Wind, LP	SPP		United States			GO	GOP										
NCR01116	Louisiana Energy & Power Authority	SPP		United States	BA													
NCR06048	Lubbock Power And Light	SPP	CFR	United States												TOP		
NCR06048	Lubbock Power And Light	SPP		United States		DP				LSE					TO			
NCR08061	Macquarie Energy LLC	SPP		United States							PSE							
NCR10300	Resources)	SPP		United States			GO	GOP										
NCR02800	Merrill Lynch Commodities, Inc.	SPP		United States							PSE							
NCR00824	MidAmerican Energy Company	SPP		United States							PSE							

NCR01118	Midwest Energy, Inc.	SPP		United States		DP				LSE		PSE				TO	TOP	TP	
NCR06050	Mississippi Delta Energy Agency	SPP		United States									RP			TO			
NCR06051	Missouri Joint Municipal Electric Utility Commission	SPP		United States						LSE		PSE							
NCR00050	Morgan Stanley Capital Group Inc.	SPP		United States								PSE							
NCR06053	NAES Corporation - Blackhawk	SPP		United States				GO											
NCR06055	NAES Corporation - Mustang	SPP		United States				GO											
NCR01121	Natchitoches Utility System	SPP		United States		DP				LSE									
NCR10317	NextEra Energy Power Marketing, LLC	SPP		United States								PSE							
NCR01096	NextEra Energy Resources, LLC	SPP		United States			GO	GO								TO			
NCR11019	Noble Americas Gas & Power Corp.	SPP		United States								PSE							
NCR11070	Noble Great Plains Windpark, LLC	SPP		United States			GO	GO											
NCR06054	North American Energy Services - Dogwood	SPP		United States				GO											
NCR01124	Northeast Texas Electric Cooperative, Inc	SPP		United States		DP				LSE		PSE		RP					
NCR10202	NRG Power Marketing, LLC	SPP		United States								PSE							
NCR10121	Occidental Power Marketing, L.P.	SPP		United States						LSE		PSE							
NCR10100	Occidental Power Services, Inc.	SPP		United States								PSE							
NCR01130	Oklahoma Gas And Electric Co.	SPP		United States	BA	DP	GO	GO		LSE		PSE		RP		TO	TOP	TP	
NCR04108	Oklahoma Municipal Power Authority	SPP		United States		DP	GO	GO		LSE		PSE		RP					
NCR00860	Omaha Public Power District	SPP		United States								PSE							
NCR01023	Otter Tail Power Company	SPP		United States								PSE							
NCR01135	Paragould Light & Water Commission	SPP		United States		DP				LSE									
NCR11117	People's Electric Cooperative	SPP		United States		DP				LSE									
NCR01136	Piggott Light & Water	SPP		United States		DP				LSE									
NCR01137	Poplar Bluff	SPP		United States		DP				LSE									
NCR05326	Powerex Corp.	SPP		United States								PSE							
NCR05326	Powerex Corp.	SPP		Columbia								PSE							
NCR00371	PPL EnergyPlus, LLC	SPP		United States								PSE							
NCR01139	Public Service Commission Of Yazoo City	SPP		United States		DP				LSE									
NCR05333	Public Service Company Of New Mexico	SPP		United States								PSE							
NCR01140	Rainbow Energy Marketing Corporation	SPP		United States								PSE							

NCR06010	Rayburn Country Electric Cooperative, Inc.	SPP		United States		DP				LSE					TO			
NCR10304	Red Hills Wind Project, LLC.	SPP		United States			GO	GOP										
NCR05386	Sempra Energy Trading LLC	SPP		United States							PSE							
NCR04119	Sharyland Utilities LP	SPP		United States		DP				LSE								
NCR05118	Shell Energy North America (US), L.P.	SPP		United States							PSE							
NCR01142	Sikeston Board Of Municipal Utilities	SPP		United States		DP	GO	GOP		LSE	PSE			TO				
NCR07211	Silverhill Ltd.	SPP		United States							PSE							
NCR07211	Silverhill Ltd.	SPP		Ontario							PSE							
NCR11049	Smoky Hills Wind Farm, LLC	SPP		United States			GO	GOP										
NCR10316	Smoky Hills Wind Project II, LLC	SPP		United States			GO	GOP			PSE							
NCR01143	Southwest Power Pool	SPP		United States					IA	PA		RC		RSG			TP	TSP
NCR01144	Southwestern Power Administration	SPP		United States	BA						PSE		RP		TO	TOP	TP	TSP
NCR01145	Southwestern Public Service Co. (Xcel Energy)	SPP	CFR	United States												TOP		
NCR01145	Southwestern Public Service Co. (Xcel Energy)	SPP		United States	BA	DP	GO	GOP		LSE	PSE		RP		TO		TP	TSP
NCR11069	SU FERC, LLC	SPP		United States											TO			
NCR01148	Sunflower Electric Power Corporation	SPP		United States	BA	DP	GO	GOP		LSE	PSE		RP		TO	TOP	TP	
NCR00633	Tenaska Gateway Partners Ltd	SPP		United States			GO	GOP										
NCR00635	Tenaska Power Services Co.	SPP		United States							PSE							
NCR01152	Terrebonne Parish Consolidated Government	SPP		United States		DP				LSE								
NCR01342	Tex-La Electric Cooperative Of Texas, Inc	SPP		United States		DP				LSE	PSE		RP		TO		TP	
NCR01155	The Empire District Electric Company	SPP		United States	BA	DP	GO	GOP		LSE	PSE		RP		TO	TOP	TP	
NCR00076	The Energy Authority, Inc.	SPP		United States							PSE							
NCR08074	TransAlta Energy Marketing (US) Inc.	SPP		Alberta							PSE							
NCR08074	TransAlta Energy Marketing (US) Inc.	SPP		United States							PSE							
NCR01357	USACE - Kansas City District	SPP		United States			GO	GOP							TO			
NCR06037	USACE - Little Rock District	SPP		United States			GO	GOP							TO			
NCR06038	USACE - Tulsa District	SPP		United States			GO	GOP							TO			
NCR00658	Westar Energy, Inc.	SPP		United States	BA	DP	GO	GOP		LSE	PSE		RP		TO	TOP	TP	
NCR01160	Western Farmers Electric Cooperative	SPP		United States	BA	DP	GO	GOP		LSE	PSE		RP		TO	TOP	TP	
NCR01162	Yoakum Electric Generating Cooperative, Inc.	SPP		United States			GO											