

**Exigences techniques de raccordement de centrales
au réseau de transport d'Hydro-Québec
(version anglaise)**

À la suite de la décision D-2016-127

Technical Requirements for the Connection of Generating Stations to the Hydro-Québec Transmission System

December 2016

Appendices D and E remain subject to approval by the Régie de l'énergie.

Table of Contents

1.	DEFINITIONS	1
2.	PURPOSE	5
3.	APPLICATION	7
4.	TECHNICAL INFORMATION REQUIRED.....	9
5.	GENERAL REQUIREMENTS	13
5.1	SWITCHYARD	13
5.2	GENERATING STATION CONNECTION CHARACTERISTICS	13
5.2.1	Generating station connected directly to Transmission System.....	13
5.2.2	Generating station connected through a customer facility	16
5.3	BULK POWER SYSTEM AND MAIN TRANSMISSION SYSTEM	18
5.4	DESIGN AND OPERATION OF GENERATING STATIONS	18
5.4.1	Maximum loss of generation	18
5.4.2	Generating station islanding.....	18
5.4.3	Blackstart capability	18
5.4.4	Synchronizing of generating units with Transmission System	18
6.	VOLTAGE- AND FREQUENCY-RELATED REQUIREMENTS.....	19
6.1	STEADY-STATE VOLTAGE RANGES	19
6.2	STEADY-STATE FREQUENCY RANGES	19
6.3	GENERATING STATION RESPONSE TO DISTURBANCES ON THE TRANSMISSION SYSTEM.....	19
6.3.1	Undervoltage response of generating station	19
6.3.2	Overvoltage response of generating station.....	20
6.3.3	Generating station response to frequency variations.....	22
6.4	VOLTAGE REGULATION, EXCITATION SYSTEM AND FREQUENCY CONTROL	23
6.4.1	Voltage regulation	23
6.4.2	Static excitation system	23
6.4.3	Frequency control.....	24
7.	EQUIPMENT-RELATED REQUIREMENTS	27
7.1	GROUNDING CONNECTION	27
7.1.1	Effectively grounded Transmission System.....	27
7.1.2	Non-effectively grounded Transmission System.....	28
7.2	GENERAL ELECTRICAL CHARACTERISTICS OF EQUIPMENT	29
7.3	DISCONNECT SWITCHES	29
7.4	CIRCUIT BREAKERS	30
7.4.1	Tie breaker.....	30
7.5	SURGE ARRESTERS ON HIGH-VOLTAGE SIDE OF SWITCHYARD	30
7.6	SYNCHRONOUS AND ASYNCHRONOUS GENERATOR VOLTAGE UNBALANCES, IMPEDANCES AND TIME CONSTANTS ...	31
7.7	DESIGN POWER FACTOR OF GENERATING EQUIPMENT	31
7.7.1	Synchronous generators.....	31

7.7.2	Other types of generating equipment	32
7.8	HARMONICS PRODUCED BY GENERATION EQUIPMENT.....	32
7.9	INERTIA CONSTANT OF <i>GENERATING UNITS</i>	32
7.10	STEP-UP TRANSFORMERS	32
7.10.1	Taps.....	32
7.10.2	Winding connections of step-up transformers.....	33
7.10.3	Impedance values.....	33
7.10.4	Energizing.....	33
7.11	POSSIBLE <i>TRANSMISSION SYSTEM</i> VOLTAGE CHANGES.....	33
7.12	TIE LINE BUILT BY THE POWER PRODUCER	33
8.	PROTECTION SYSTEM REQUIREMENTS	35
8.1	GENERAL PRINCIPLES.....	35
8.1.1	Selectivity of power producer facility protection systems to <i>Transmission System</i> disturbances	35
8.1.2	Automatic reclosing	35
8.2	GROUNDING CONNECTION	35
8.3	CIRCUIT BREAKERS	35
8.4	PROTECTION FUNCTIONS RELATED TO <i>TRANSMISSION SYSTEM</i> NEEDS	35
8.4.1	Protection from faults in power producer facilities	36
8.4.2	Protection from faults on <i>Transmission System</i>	36
8.4.3	Voltage protection, frequency protection and remote tripping	36
8.4.4	Breaker failure protection.....	38
8.4.5	Protection from other phenomena	38
8.5	EQUIPMENT RELATED TO <i>TRANSMISSION SYSTEM</i> PROTECTION REQUIREMENTS	39
8.5.1	Protective and trip relays.....	39
8.5.2	Protection system settings.....	39
8.5.3	Protection system power supply.....	39
8.5.4	Voltage and current transformers.....	39
8.6	TELECOMMUNICATION SYSTEMS FOR TELEPROTECTION FUNCTIONS.....	39
9.	REAL-TIME OPERATION REQUIREMENTS	41
9.1.	DATA REQUIRED FOR REAL-TIME <i>TRANSMISSION SYSTEM</i> OPERATION	41
9.2	TELECOMMUNICATION SYSTEMS FOR OPERATIONS FUNCTIONS.....	43
10.	VERIFICATION OF COMPLIANCE WITH REQUIREMENTS	45
10.1.	VERIFICATION BY THE <i>TRANSMISSION PROVIDER</i>	45
10.2	VERIFICATION BY THE POWER PRODUCER	45
10.3	POWER PRODUCER EQUIPMENT TEST REPORTS	47
11.	REQUIREMENTS REGARDING EVENT RECORDERS.....	49
12.	COMPLEMENTARY REQUIREMENTS SPECIFIC TO WIND <i>GENERATING STATIONS</i>	51
12.1	SWITCHYARD	51
12.2	WIND <i>GENERATING STATION</i> RESPONSE TO <i>DISTURBANCES</i> ON THE <i>TRANSMISSION SYSTEM</i>	52
12.2.1	Wind generating station response during low voltage ride through (LVRT)	52
12.2.2	Wind generating station response during overvoltage.....	54

12.2.3	Wind generating station response to frequency variations	54
12.3	VOLTAGE REGULATION AND POWER FACTOR	55
12.4	FREQUENCY CONTROL	58
12.4.1	Underfrequency control (<i>inertial response</i>).....	58
12.4.2	Overfrequency control	59
12.5	PROTECTION SYSTEMS	59
12.5.1	Voltage protection.....	59
12.5.2	Frequency protection.....	59
12.6.	DATA REQUIRED FOR REAL-TIME <i>TRANSMISSION SYSTEM</i> OPERATION.....	60
12.7	TECHNICAL INFORMATION TO SUBMIT TO THE <i>TRANSMISSION PROVIDER</i> TO CONDUCT ITS STUDIES	60
12.8	MAXIMUM UP- AND DOWN-RAMP RATES	61
12.9	WIND GENERATOR SHUTDOWN WHEN VERY COLD WEATHER OR HIGH WINDS ARE FORECAST	61
12.10	STABILIZER	61
12.11	LIMITING REAL POWER	61
12.12	SWITCHYARD STEP-UP TRANSFORMERS	62
LIST OF MANDATORY REFERENCE DOCUMENTS		63

List of Figures

Figure 1 – <i>Generating station</i> directly connected to <i>Transmission System</i> (high-voltage side of switchyard)	14
Figure 2 – <i>Generating station</i> directly connected to <i>Transmission System</i> (low-voltage side of switchyard)	15
Figure 3 – <i>Generating station</i> connected through a <i>customer facility</i>	17
Figure 4 – Position of certain power producer devices relative to the telecommunications junction point.....	40
Figure 5 – Wind <i>generating station</i> switchyard	51
Figure 6 – Low voltage ride through during which the wind <i>generating station</i> must remain in service following a <i>disturbance</i>	53
Figure 7 – Reactive power available on high-voltage side of switchyard vs. voltage	56
Figure 8 – Reactive power available on high-voltage side of switchyard vs. real power of wind generators in service ...	57

List of Tables

Table 1 – Technical information required when requesting a connection	10
Table 2 – Undervoltage ranges vs. minimum time during which the <i>generating station</i> must remain in service without <i>generating unit tripping</i> following a <i>disturbance</i>	20
Table 3 – Overvoltage ranges vs. minimum time during which the <i>generating station</i> must remain in service without <i>generating unit tripping</i> following a <i>disturbance</i>	21
Table 4 – Frequency ranges vs. minimum time during which the <i>generating station</i> must remain in service without <i>generating unit tripping</i> following a <i>disturbance</i>	22
Table 5 – Standard insulation and short-circuit levels for Hydro-Québec <i>Transmission System</i> equipment.....	29
Table 6 – Data required by the <i>Transmission Provider</i> for the telecontrol centre (TC) and <i>System</i> control centre (SCC) ¹⁻²	42
Table 7 – Maximum intervals between period checks of underfrequency trip relays for 20 MW or more <i>generating units</i>	46
Table 8 – Overvoltage ranges vs. minimum time during which all wind <i>generation station</i> equipment must remain in service following a <i>disturbance</i>	54
Table 9 – Frequency ranges vs. minimum time during which all wind <i>generating station</i> equipment must remain in service following a <i>disturbance</i>	55

List of Appendices

Appendix A - Technical information required by the <i>Transmission Provider</i> to conduct its studies.....	65
Appendix B – Informations required by <i>Transmission Provider</i> for wind <i>generating station</i> modeling using EMTP-RV.....	71
Appendix C – Information to be included in power producer <i>facility</i> protection study	73
Appendix D – General Reference Electrical Characteristics (“CEGR”) Static excitation systems for salient-pole and round-rotor generators	75
Appendix E – General Reference Electrical Characteristics (“CEGR”) Delta-omega multiband stabilizer.....	81
Appendix F – Requirements regarding verification and validation of power producer models and <i>facilities</i>	93

1. Definitions

Italicized terms in the text are defined below.

Asynchronous generator

An asynchronous machine operating to generate electricity. It may be connected to the *system* directly or through a converter.

Bulk Power System

The *Bulk Power System* as defined in the *Glossary of Terms and Acronyms used in Reliability Standards* and its modifications as adopted from time to time by the Régie de l'énergie.

Closing

The closing of a circuit breaker by a control device, an automatic control or a protection system.

Customer

An “Eligible Customer” as defined in section 1.8 of the *Hydro-Québec Open Access Transmission Tariff*, as approved from time to time by the Régie de l'énergie, including a self-generator connected, or to be connected, to the *Transmission System*, where “self-generator” refers to a client that is the owner-operator of a *facility* used to fulfill its energy needs in part or full.

Customer facility

The native-load *customer facility* connected, or to be connected, to the *Transmission System*.

Disturbance

A *disturbance* as defined in the *Glossary of Terms and Acronyms used in Reliability Standards* and its modifications as adopted from time to time by the Régie de l'énergie.

Facilities Study

The *Facilities Study* as defined in section 1.27 of the *Hydro-Québec Open Access Transmission Tariff*, as approved from time to time by the Régie de l'énergie.

Facility

A *facility* as defined in the *Glossary of Terms and Acronyms used in Reliability Standards* and its modifications as adopted from time to time by the Régie de l'énergie.

Generating station

In this document, a *generating station* means all power producer *facilities* located at a given generating site (e.g., a hydroelectric, thermal or wind *generating station*), and also includes the customer substation when the *generating station* is connected through a *customer facility*.

Generating unit

A unit that produces electricity, usually comprised of a synchronous turbine-generator combination (synchronous *generating unit*) or an asynchronous turbine-generator combination (asynchronous *generating unit*).

Glossary of Terms and Acronyms used in Reliability Standards

Document defining terms and acronyms applicable to reliability standards in Québec and its modifications as adopted from time to time by the Régie de l'énergie.

Good Utility Practice

Good Utility Practice as defined in section 1.44 of the *Hydro-Québec Open Access Transmission Tariff*, as approved from time to time by the Régie de l'énergie.

Interconnection study

In the case of a request for the connection of a *generating station*, the *system* impact study as defined in section 1.28 of the *Hydro-Québec Open Access Transmission Tariff*, as approved from time to time by the Régie de l'énergie.

Islanding

The splitting of a power *system* into subsystems comprising both a load and generating *facilities*. This phenomenon generally arises following a *disturbance* or a switching operation.

Main Transmission System

The *Main Transmission System* as defined in the *Glossary of Terms and Acronyms used in Reliability Standards* and its modifications as adopted from time to time by the Régie de l'énergie.

Network Upgrades

Network Upgrades as defined in section 1.4 of the *Hydro-Québec Open Access Transmission Tariff*, as approved from time to time by the Régie de l'énergie.

Reclosing

See entry for *closing*.

Reliability Coordinator

The *Reliability Coordinator* as defined in the *Glossary of Terms and Acronyms used in Reliability Standards* and its modifications as adopted from time to time by the Régie de l'énergie.

Remote tripping

The opening of a circuit breaker actuated at a distance by an automatic control or a protection system.

Synchronous generator

A synchronous machine operating to generate electricity. It may be connected to the *system* directly or through a converter.

System

A *system* as defined in the *Glossary of Terms and Acronyms used in Reliability Standards* and its modifications as adopted from time to time by the Régie de l'énergie.

Transmission Provider

Hydro-Québec when carrying on electric power transmission activities.

Transmission System

The *Transmission System* as defined in section 1.49 of the *Hydro-Québec Open Access Transmission Tariff*, as approved from time to time by the Régie de l'énergie.

Tripping

The opening of a circuit breaker by a control device, an automatic control or a protection system.

2. Purpose

This document sets out technical requirements for the connection of *generating stations* of *customers* to the Hydro-Québec *Transmission System*. The *generating stations* may be connected either directly to the *Transmission System* or through *customer facilities*.

The requirements defined herein are primarily intended to ensure efficient operation of the Hydro-Québec *Transmission System* based on five principles:

- Reliability of the *Transmission System*
- Stability of the *Transmission System* and of the *generating stations* connected to it
- Maintaining service quality for customers connected to the Hydro-Québec *System*
- Protection of *Transmission Provider* equipment
- Human safety

3. Application

Requirements described herein apply to *generating stations* whose installed capacity is greater or equal to 1.0 MW (unless otherwise specified).

Complementary requirements specific to wind *generating stations* are set out in Chapter 12.

All requirements presented herein apply to the connection of *generating stations* to the Hydro-Québec *Transmission System* in any of the following situations:

- *Generating station* to be connected directly to the *Transmission System*
- *Generating station* to be connected to the *Transmission System* through a *customer facility*. In this case, *Technical Requirements for the Connection of Customer Facilities to the Hydro-Québec Transmission System*¹ [1] also applies.
- Substantial change of a *generating station* already connected to the *Transmission System*, either directly or through a *customer facility*. Requirements apply to any equipment undergoing the substantial changes in question.

In the context of the application of technical requirements for the connection of *generating stations*, a “substantial change” is any change besides normal maintenance made to an existing *generating station* to overhaul or replace outdated *apparatus* or equipment, or which result in changing the services provided, or electrical or mechanical characteristics, such as rated power, maximum power, control and protection systems, or station services, or in changing software (or software versions) for *facilities* using power electronics, etc.

Some requirements presented herein apply to *generating stations* that are to be connected or to the substantial change of a connected *generating station* in any of the following situations:

- The connection of a *generating station* to the distribution system², to *facilities* of a municipal system³ or of the SJBR electricity cooperative³. Requirements having an impact on the *Transmission System* then apply, namely:

¹ As approved from time to time by the Régie de l'énergie.

² As defined in the *Act respecting the Régie de l'énergie*, art.2 (R.S.Q., chapter R-6.01).

³ Under the *Act respecting the Régie de l'énergie*, municipal power distribution systems governed by the *Act respecting municipal and private electric power systems* (R.S.Q. c. S-41), including the **Coopérative Technical Requirements for the Connection of Generating Stations to the Hydro-Québec Transmission System** December 2016

- Requirements governing frequency ranges and the minimum time *generating stations* must remain in service without *generating unit tripping*, as specified in Table 4 of section 6.3.3 or in Table 7 of section 12.2.3 for a wind *generating station*
- Frequency control requirements, set out in section 6.4.3 or in section 12.4 for wind *generating stations*
- Frequency protection requirements, set out in section 8.4.3.2 or 12.5.2 for wind *generating stations*
- *Generating station remote tripping* requirement set out in section 8.4.3.3
- Requirements regarding measurement of injected real and reactive power, needed by the telecontrol centres (TCs) and the *System Control Centre (SCC)* and described in section 9.1

Hydro-Québec Distribution sets other requirements for *generating stations* connected to the distribution system. These requirements are presented in the document *Requirements for the Interconnection of Distributed Generation to the Hydro-Québec Medium-Voltage Distribution System (E.12-01)*⁴.

Other requirements, set by those responsible for the municipal system or the SJBR electricity cooperative, may also apply.

Given the evolving nature of standards and technologies, the uniqueness of each *generating station* connection project and possible *system* constraints, the *Transmission Provider* may specify further requirements based on its studies.

This document does not cover *generating stations* to be connected to a Hydro-Québec off-grid *System*⁵.

régionale d'électricité de Saint-Jean-Baptiste-de-Rouville (SJBR electricity cooperative), which have been Hydro-Québec Distribution customers since May 13, 1997.

⁴ Reference provided only for explanatory and informative purposes.

⁵ A power *System* permanently unconnected to the integrated Hydro-Québec *Transmission System* (e.g., *System* providing power to a community in Québec's Far North or Îles-de-la-Madeleine power *System*).

4. Technical information required

The *Transmission Provider* chooses the solution for the connection of the *generating station* to the *Transmission System* and determines what *Network Upgrades* this entails.

Table 1 summarizes the technical information required from the power producer and the *Transmission Provider* when requesting the connection of any *generating station* to the *Transmission System* or in the advent of any substantial change to an already connected *generating station*. Technical information required from the power producer and Hydro-Québec to evaluate compliance with emission limits is specified in Appendix A of *Emission Limits for Disturbances on the Hydro-Québec Transmission System*⁶.

⁶ As approved from time to time by the Régie de l'énergie.

Table 1 – Technical information required when requesting a connection

Power producer	<i>Transmission Provider</i>
1. Connection request or substantial change of already connected <i>generating station</i>	
<ul style="list-style-type: none"> • Information specified in Appendix A • For a wind <i>generating station</i>: oscillation characteristics of wind generators in the presence of mechanical or electrical <i>disturbances</i> • For a wind <i>generating station</i>, detailed description of strategies used by real power, reactive power, voltage and frequency control systems 	<ul style="list-style-type: none"> • Information specified in the interconnection study agreement provided for in <i>Hydro-Québec Open Access Transmission Tariff</i>, and that may include: <ul style="list-style-type: none"> ○ Connection point of the <i>generating station</i> to the <i>Transmission System</i> ○ Voltage of connection to <i>Transmission System</i> ○ <i>Network Upgrades</i> ○ Schematic diagram of <i>generating station</i> connection ○ Short-circuit levels at the connection point ○ Any operating restrictions ○ Preliminary data on typical lead times and costs for <i>Network Upgrades</i> ○ Automatic control and protection system requirements ○ Additional connection requirements that may apply, including impedance or time constant limits for <i>synchronous generators</i>, and impedance limits for <i>generating station</i> step-up transformers ○ Any relevant characteristics of the Hydro-Québec <i>Transmission System</i> line and substation

Power producer	<i>Transmission Provider</i>
2. <i>Facilities study</i>	
<ul style="list-style-type: none"> • Single-line diagram of its <i>facilities</i> • Information specified in Appendix B • Preliminary study of <i>generating station</i> protection systems, in accordance with Appendix C <ul style="list-style-type: none"> ○ Information specified in sections 1 to 3 ○ Control (or logic) and protection schematics (section 4) • Specifications of disconnect switch (or visible disconnection point equipment) • Specifications of current and voltage transformers for <i>Transmission System</i> protection systems 	<ul style="list-style-type: none"> • Information required to complete design and engineering studies of power producer <i>facilities</i>, and that may include: <ul style="list-style-type: none"> ○ Estimated duration of work required on <i>Transmission System</i> ○ Data required to calculate rises in ground potential ○ Location of switchyard ○ Complementary technical requirements for protection systems, automatic control systems, switchyard equipment and telecommunication links between switchyard and <i>Transmission System</i> ○ Report on tie line protection study • Special design requirements for any line built by power producer
3. <i>Implementation and startup</i>	
<ul style="list-style-type: none"> • Final study of <i>generating station</i> protection systems, in accordance with Appendix C • Description of equipment used to transmit real-time operating data • Strategy for quickly removing any tie breaker with a built-in system for detecting faulty internal states • Test results demonstrating that the wind <i>generating station</i> meets the voltage and frequency requirements • Validation test (initial verification) reports 	<ul style="list-style-type: none"> • Identification for switchyard equipment (nomenclature) • Settings for voltage regulation system • Settings for static excitation system with stabilizer • Settings for speed (or, for a wind <i>generating station</i>, frequency) regulation system • Settings for stabilizer of wind <i>generating station</i>

Power producer	<i>Transmission Provider</i>
4. Post-commissioning	
<ul style="list-style-type: none">• Validation test (periodic verification) reports	

5. General requirements

Technical requirements described herein cover aspects specifically related to the *Transmission System*.

Additional requirements may be set based on information drawn from the characteristics of a given project and *Transmission Provider* studies for the connection of a *generating station* to the *Transmission System* (see Table 1 for more information). The power producer must consult the *Transmission Provider* for more details.

Power producer equipment and *facilities* must also comply with codes, standards and rules applicable in Québec, as well as *Good Utility Practice*.

5.1 Switchyard

The switchyard comprises the high-voltage portion of the substation and includes the step-up transformers and extends to their low-voltage terminal. The low-voltage portion is part of the *generating station*. If multiple voltage steps are required at the switchyard, they are also included, along with all components and lines connecting together the different output levels. Strictly for the purpose of applying technical requirements, if a *generating station* is connected to the *Transmission System* through a *customer facility*, the switchyard includes the customer substation.

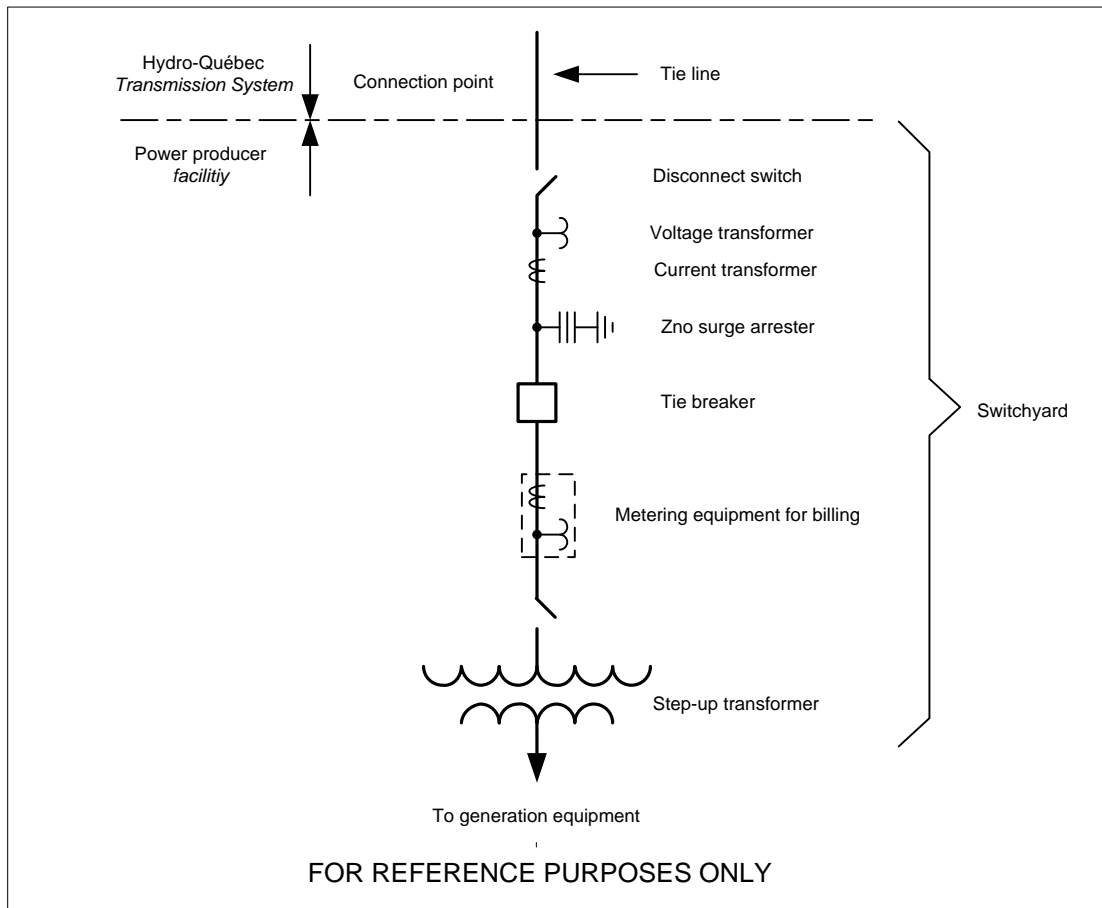
The switchyard is connected to the *Transmission System* using the tie line. A *generating station* may need more than one tie line.

5.2 *Generating station connection characteristics*

5.2.1 *Generating station connected directly to Transmission System*

Figure 1 shows the most common connection for a *generating station* connected directly to the *Transmission System* on the high-voltage side of the switchyard.

Figure 1 – *Generating station* directly connected to *Transmission System* (high-voltage side of switchyard)



The **connection point** is the boundary point between the *Transmission System* and the power producer *facilities*. In this case, the connection point is generally located on the high-voltage side of the switchyard.

The **disconnect switch** is the first visible disconnection point at each connection point; it must be located as close as possible to the connection point. This disconnect switch must be accessible at all times so the *Transmission Provider* may lock it out. It is required to isolate the *generating station* for operational purposes and to ensure the safety of personnel working on the *Transmission System*.

The **tie breaker** must be located between the step-up transformer and the disconnect switch, and as close as possible to the latter. If there are multiple step-up transformers, several tie breakers may be required to meet *Transmission System* needs. The tie breaker is used to isolate the *generating station* from the *Transmission System* under fault conditions.

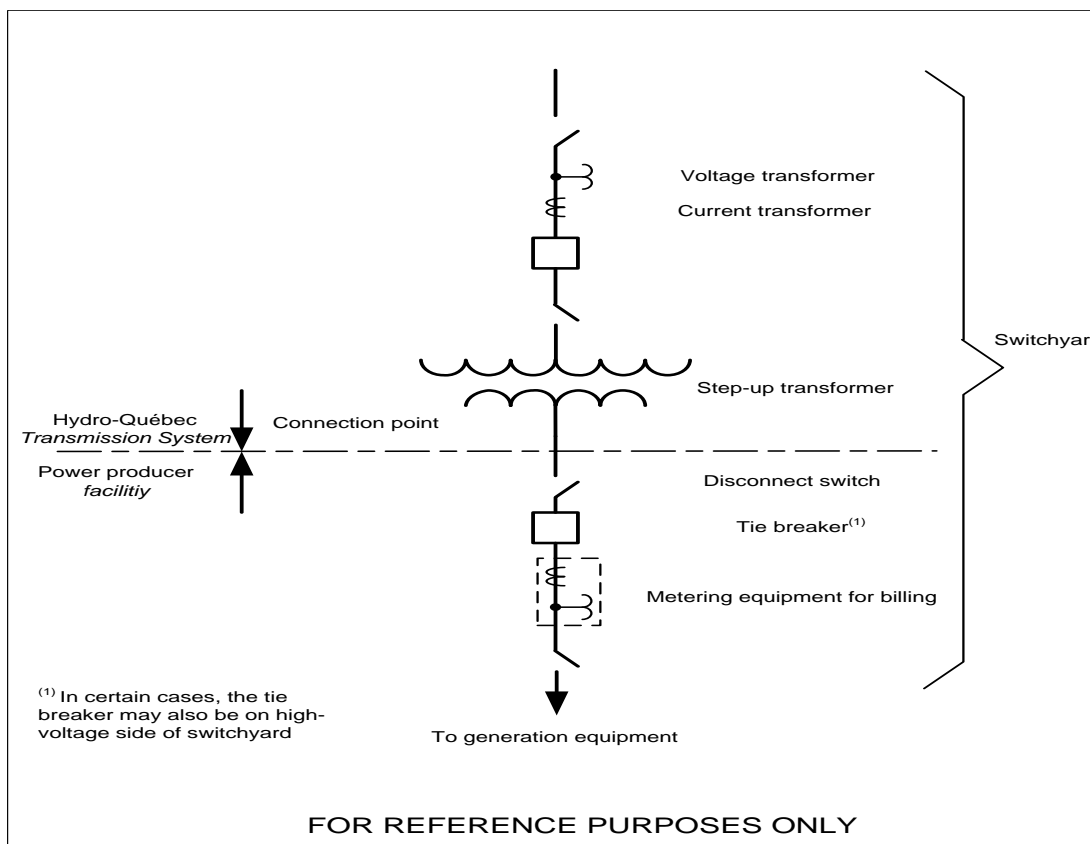
Voltage and current transformers must be located between the disconnect switch and the tie breaker, unless agreed otherwise with the *Transmission Provider*.

Surge arresters to be installed by the power producer, if desired so, must also be located on the *generating station* side of the disconnect switch, unless agreed otherwise with the *Transmission Provider*.

The **metering equipment for billing** must be located between the tie breaker and the isolating switch used to isolate the step-up transformer(s).

Figure 2 shows the connection of a *generating station* connected directly to the *Transmission System* on the low-voltage side of the switchyard.

Figure 2 – *Generating station* directly connected to *Transmission System* (low-voltage side of switchyard)



The **connection point** is the boundary point between the *Transmission System* and the power producer *facilities*. In this case, the connection point is generally located on the low-voltage side of the switchyard.

The **disconnect switch** is the first visible disconnection point at each connection point; it must be located as close as possible to the connection point. This disconnect switch must be accessible at all times so the *Transmission Provider* may lock it out. It is required on the low-voltage side of the switchyard to isolate the *generating station* for operational purposes and to ensure the safety of personnel working on the *Transmission System*.

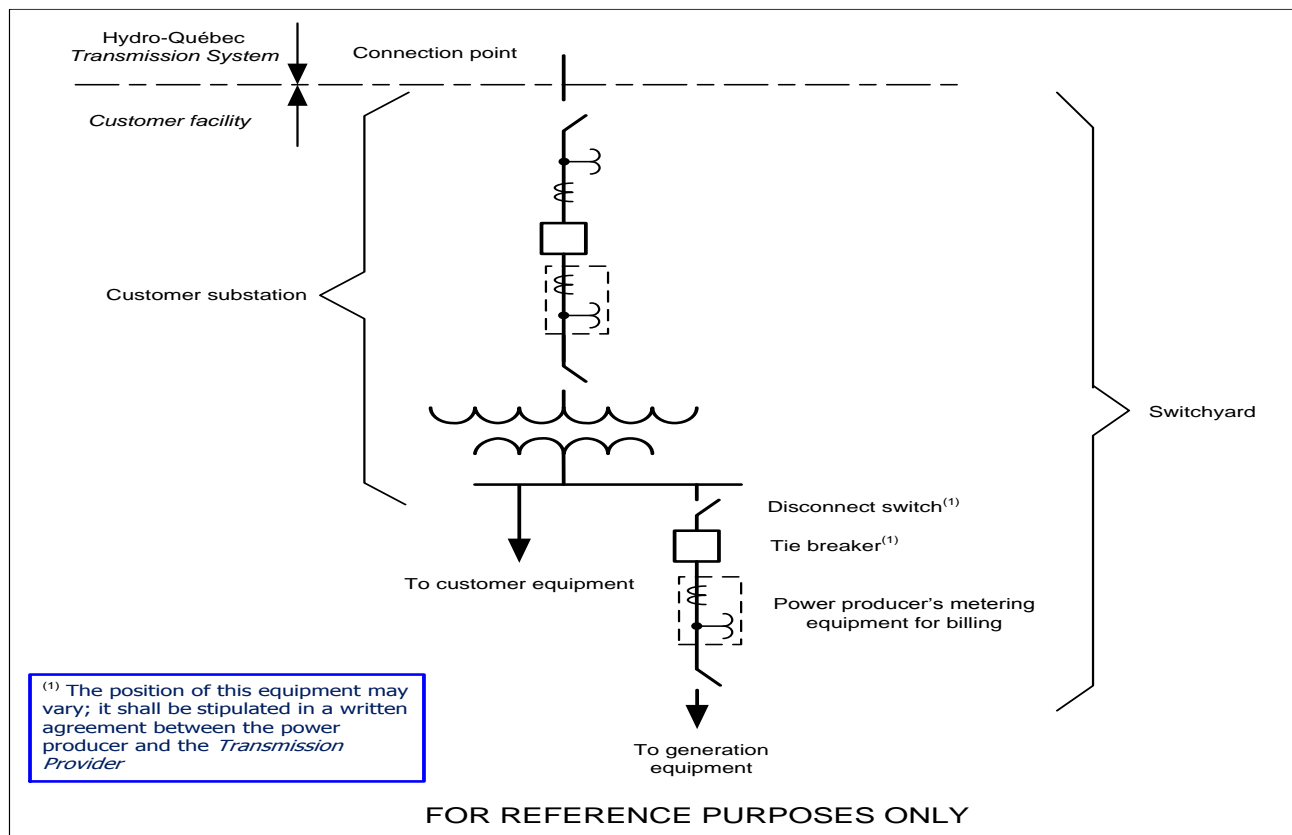
The **tie breaker** may be required on the low- or high-voltage side of the step-up transformer. If there are multiple step-up transformers, several tie breakers may be required to meet *Transmission System* needs. The tie breaker is used to isolate the *generating station* from the *Transmission System* under fault conditions.

The **metering equipment for billing** must be located between the tie breaker and the related isolating switch.

5.2.2 *Generating station connected through a customer facility*

Figure 3 shows the most common connection for a *generating station* connected through a *customer facility*.

Figure 3 – *Generating station connected through a customer facility*



The **customer substation** must comply with *Technical Requirements for the Connection of Customer Facilities to the Hydro-Québec Transmission System* [1], as approved from time to time by the Régie de l'énergie.

The **connection point** is the boundary point between the *Transmission System* and the *customer facility*. In this case, the connection point is generally located on the high-voltage side of the customer substation.

The **disconnect switch** must be located as close as possible to the connection point. This disconnect switch must be accessible at all times so the *Transmission Provider* may lock it out. It is required to isolate the *generating station* for operational purposes and to ensure the safety of personnel working on the *Transmission System*.

The **tie breaker** must be located as close as possible to the disconnect switch. The tie breaker is used to isolate the *generating station* from the *Transmission System* under fault conditions.

The **metering equipment for billing** must be located between the tie breaker and the related isolating switch.

5.3 *Bulk Power System and Main Transmission System*

The *Transmission Provider* determines whether the *generating station* is part of the *Bulk Power System*. If so, it informs the power producer at the time of the *interconnection study* and submits the applicable criteria and requirements at the Régie de l'énergie for approval such that these requirements can become mandatory regarding any *generating station* being part of the *Bulk Power System*.

Furthermore, a generating *facility* with a capacity of 50 MVA or more is, by definition, part of the *Main Transmission System*, under the supervision of the *Reliability Coordinator*, and subject to reliability standards adopted by the Régie de l'énergie. The owner or the operator of the generating *facility* shall then be entered in the *Register of Entities Subject to Reliability Standards*. This Registry shall be submitted to the Régie de l'énergie for approval.

5.4 *Design and operation of generating stations*

5.4.1 *Maximum loss of generation*

Any *generating station* with an installed capacity greater than 1000 MW must be designed, built and operated so that a failure, malfunction or accidental operation of any system, device or component that is part of the power producer *facilities* cannot result in a loss of generation exceeding 1000 MW.

5.4.2 *Generating station islanding*

Unless otherwise agreed with the *Transmission Provider*, the *generating station* must not supply in islanded mode native-load Hydro-Québec customers normally connected to the Hydro-Québec *System*. The power producer may, however, island on its own loads, and operate its own *facilities* in islanded mode, and then assume the risks associated with self-supply.

5.4.3 *Blackstart capability*

The power producer may be required to equip its *generating station* with a number of synchronous *generating units* having blackstart capability to allow the *Transmission Provider* to re-energize the *Transmission System* after a blackout.

5.4.4 *Synchronizing of generating units with Transmission System*

The *generating station* must be equipped with a frequency synchronization system for *synchronous generators* or a speed-monitoring system for *asynchronous generators* to limit *disturbances* in the *Transmission System* during synchronizing operations on its *generating units*.

Operations to synchronize *generating units* to the *Transmission System* may have to be performed on the high-voltage side of step-up transformers. Otherwise, other mitigation measures must be taken to limit *disturbances* on the *Transmission System* when step-up transformers are energized.

6. Voltage- and frequency-related requirements

6.1 Steady-state voltage ranges

The *generating station* must be designed to generate and deliver to the connection point the projected maximum real power within the prescribed voltage range of the *System* to which it is connected.

The steady-state voltage of the *Transmission System* may deviate from the nominal voltage by $\pm 6\%$ on 44-kV and 49-kV *Systems*, and by $\pm 10\%$ on 69-kV or higher *Systems*, except for the 735-kV *System* where the allowed deviation from the nominal voltage ranges from -5% to 4%. On some portions of the *Transmission System*, the allowable steady-state voltage range may differ from the values above to account for the characteristics of existing equipment or specific operating constraints.

6.2 Steady-state frequency ranges

The *generating station* must be designed to generate and deliver to the connection point the projected maximum real power within the prescribed voltage range of the *System* to which it is connected.

The steady-state frequency of the *System* may deviate from its nominal frequency (60 Hz) by $\pm 1\%$, i.e., from 59.4 to 60.6 Hz.

6.3 Generating station response to disturbances on the Transmission System

The *generating station* must remain in service without a *generating unit tripping*, directly or indirectly, when voltage and frequency deviations occur following a *disturbance*, for the durations given in tables 2, 3 and 4.

The *generating station* must also help restore the *Transmission System* to normal operating conditions (voltage and frequency) after a *disturbance*.

To ensure compliance with requirements, special equipment (e.g., static or synchronous compensators) may be added to the *generating station*.

6.3.1 Undervoltage response of generating station

Note: For wind *generating stations*, requirements described in this section are superseded by those described in section 12.2.1.

The *generating station* must remain in service without *generating unit tripping*, when undervoltages occur following a *disturbance* for the durations given in Table 2.

Table 2 — Undervoltage ranges vs. minimum time during which the *generating station* must remain in service without *generating unit tripping* following a *disturbance*

Undervoltage (p.u.) ¹	Minimum time (s)
$0.9 \leq V < 1.0$	Permanently
$0.85 \leq V < 0.9$	30
$0.75 \leq V < 0.85$	2.0
$0.25 \leq V < 0.75$	1.0
$0 \leq V < 0.25$	0.15

Note 1: Positive-sequence voltage on high-voltage side of switchyard.

Various *Transmission System* faults may cause the voltage to drop below 0.75 p.u. The *generating station* must remain in service without a *generating unit tripping*, during a fault on the *Transmission System* (including the high-voltage side of the switchyard), as long as required to restore voltage after the fault is cleared, whether it is:

- a three-phase fault cleared in 0.15 s;
- a two-phase-to-ground fault or phase-to-phase fault cleared in 0.15 s;
- a phase-to-ground fault cleared in 0.30 s;
- any fault with a minimum phase-to-ground voltage of down to 0.25 p.u. cleared in 0.75 s.

A necessity to remain in service during longer faults or voltage dips may be agreed upon with the power producer if such a solution is more advantageous overall.

6.3.2 Overvoltage response of *generating station*

Note: For wind *generating stations*, requirements found in this section are superseded by those described in section 12.2.2.

The *generating station* must remain in service without *generating unit tripping*, for the durations given in the second column of Table 3 when overvoltages occur following a *disturbance*.

Furthermore, some *generating stations* required to ensure the integrity of *Transmission System* equipment must remain in service without *generating unit tripping* despite overvoltages that may arise from separation and instability on part or all of the *Transmission System*. It is up to the *Transmission Provider* to determine through the *interconnection study* whether a *generating station* to be connected must help perform this function. The *generating station* subject to this requirement

must remain in service without *generating unit tripping*, when overvoltages occur following a *disturbance* for the durations given in the third column of Table 3.

Table 3— Overvoltage ranges vs. minimum time during which the *generating station* must remain in service without *generating unit tripping* following a *disturbance*

Overvoltage (p.u.) ¹	Minimum time (s)	
	Requirement for all <i>generating stations</i>	Requirement for certain <i>generating stations</i> ³
$1.0 \leq V \leq 1.10$	Permanently	Permanently
$1.10 < V \leq 1.15$	300	300
$1.15 < V \leq 1.20$	30	30
$1.20 < V \leq 1.25$	2.0	5.0
$1.25 < V \leq 1.40$	0.10^2	2.5
$1.40 < V \leq 1.50$	0.033^2	0.10
$V > 1.50$	0.033^2	0.033

Note 1: Positive-sequence voltage on high-voltage side of switchyard.

Note 2: Temporary blocking is allowed, after a 0.022 s delay, for *facilities* using power electronics when the positive-sequence voltage exceeds 1.25 p.u. Normal operation must resume once the voltage drops back below 1.25 p.u.

Note 3: *Generating stations* protecting the integrity of *Transmission System* equipment.

6.3.3 Generating station response to frequency variations

Note: For wind *generating stations*, requirements found in this section are superseded by those described in section 12.2.3.

The *generating station* must remain in service without *generating unit tripping*, when frequency variations occur following a *disturbance* for the durations given in Table 4.

The *generating station* must also remain in service during any *System* frequency variation ranging from -4 Hz/s to +4 Hz/s following a *disturbance*.

Requirements regarding frequency variations also apply to a *generating station* connected to the distribution system, to *facilities* of a municipal system or of the SJBR electricity cooperative.

Table 4 — Frequency ranges vs. minimum time during which the *generating station* must remain in service without *generating unit tripping* following a *disturbance*

Frequency (Hz)	Minimum time
$F > 66.0$ ¹⁻²	Instantly
$63.0 < F \leq 66.0$ ¹⁻²	5 s
$61.5 < F \leq 63.0$ ¹	1.5 min
$60.6 < F \leq 61.5$	11 min
$59.4 \leq F \leq 60.6$	Permanently
$58.5 \leq F < 59.4$	11 min
$57.5 \leq F < 58.5$	1.5 min
$57.0 \leq F < 57.5$	10 s
$56.5 \leq F < 57.0$	2 s
$55.5 \leq F < 56.5$	0.35 s
$F < 55.5$	Instantly

Note 1: Instantaneous *tripping* at a frequency $f \geq 61.7$ Hz is allowed only for *generating stations* equipped with *asynchronous generators*, and for thermal and photovoltaic *generating stations*.

Note 2: Instantaneous *tripping* at a frequency $f \geq 63.5$ Hz is allowed for *generating stations* connected to the distribution system.

6.4 Voltage regulation, excitation system and frequency control

6.4.1 Voltage regulation

Note: For wind *generating stations*, requirements found in this section are superseded by those described in section 12.3.

The *generating station* must help achieve steady-state, dynamic and transient voltage regulation.

Every *synchronous generator* synchronized to the *Transmission System* must be equipped with an automatic voltage regulation system. It must be able to supply or absorb, under steady-state conditions, the reactive power needed to maintain the voltage corresponding to the power factor given in section 7.7. The power producer must apply the voltage regulation system settings given by the *Transmission Provider*.

For any other kind of generating equipment, voltage regulation may be achieved using the *generating units* or equipment added to the *generating station* (e.g., static or synchronous compensators). Voltage regulation performance of the *generating station* must always be comparable to that of one having equivalent capacity equipped with *synchronous generators* synchronized with the *Transmission System*.

In the case of a *generating station* with an installed capacity of less than 10 MW, the *Transmission Provider* may waive the requirement for an automatic voltage regulation system, especially when the short-circuit level at the connection point is much greater than the installed capacity of the *generating station*, after completing the *interconnection study*. The *generating station* must then supply sufficient reactive power to maintain a unity power factor on the high-voltage side of the switchyard.

Available reactive power at the connection point must not be limited by any component of the power producer *facilities* (e.g., cables or excitation limiters).

A *generating station* having an installed capacity higher than 100 MW must be designed and built to support *Transmission System* voltage regulation commands from external sources.

6.4.2 Static excitation system

Every 20 MW or higher synchronous *generating unit* installed in a *generating station* whose present or ultimate installed capacity is 100 MW or more must be equipped with a static excitation system that includes a stabilizer. This system must meet the requirements in CEGR⁷ reference documents *Static excitation systems for salient-pole and round-rotor generators* described in Appendix D. The stabilizer must be certified by Hydro-Québec in accordance with the requirements set in CEGR

⁷ Caractéristiques électriques générales de référence [General Reference Electrical Characteristics] (of Hydro-Québec TransÉnergie).

reference document *Delta-omega multiband stabilizer* described in Appendix E. The *Transmission Provider* specifies the settings to be used during project implementation, but may revise them as the *System* evolves.

For a *generating station* located in a major load centre⁸ or a modification of the static excitation system of such a *generating station*, the *Transmission Provider* may allow lower ceiling voltages than those specified in CEGR mentioned above for the static excitation system applicable to the *generating station*, provided the *Transmission Provider* deems benefits or performance for the *System* is undiminished compared to benefits or performance provided by a static excitation system with a stabilizer and high ceiling voltages.

Similarly, for the modification of a slow static excitation system in a *generating station* located in a major load centre, the *Transmission Provider* may allow an excitation system whose performance matches that of a system equipped with a rotating diode exciter, provided the *Transmission Provider* deems benefits or performance for the *System* is undiminished compared to benefits or performance provided by a static excitation system with a stabilizer.

For a 20 MW or lower synchronous *generating unit* or for a *generating station* whose present or ultimate installed capacity is less than 100 MW, the *Transmission Provider* may require, based on *interconnection study* results, that the synchronous *generating unit* be equipped with a static excitation system including a stabilizer. This may arise in particular if the *generating station* is far from the existing *Transmission System* or if the *generating station* could occasionally be synchronized with a neighboring *System* through a tie line.

6.4.3 Frequency control

Note: For wind *generating stations*, requirements found in this section are superseded by those described in section 12.4.

Each *generating unit* with a rated power of over 10 MW that is synchronized with the *Transmission System* must have a speed governor system with a permanent speed-droop (σ) adjustable over a range of at least 0 to 5% with no frequency dead band. Asynchronous *generating units* having a rated power greater than 10 MW must be equipped with a feedback system able to fulfill similar functions. The power producer must apply the voltage regulation system settings given by the *Transmission Provider*.

Based on *interconnection study* results, the *Transmission Provider* may however require a speed governor on *generating units* with a rated power below 10 MW, especially if it is foreseen that under certain circumstances the *generating station* may be islanded onto loads normally connected

⁸ Major load centres are located in the south of the province, in the region roughly delimited by borders 60 km north of the St. Lawrence, 60 km west of Montréal and 60 km east of Québec city.

to the Hydro-Québec *Transmission System*. Furthermore, if the *generating station* may have to be restarted in islanded mode, it must have blackstart capability.

Notwithstanding the above statement, the *Transmission Provider* may, for some *System* configurations, require that the speed governor be temporarily disabled after synchronizing with the *Transmission System*, to minimize the risk of unwanted *islanding* of the *generating station* onto a native-load customer connected to the *Transmission System*.

Requirements regarding frequency variations also apply to a *generating station* connected to the distribution system, to *facilities* of a municipal system or of the SJBR electricity cooperative.

7. Equipment-related requirements

Following standards and industry practices, the power producer must conduct engineering studies, particularly short-circuit and insulation coordination studies, in order to adequately determine the characteristics of equipment in every *generating station* to be connected to the Hydro-Québec *System*. In addition to the requirements described below, rotating electrical machines must comply with IEC standard 60034-1 – *Rotating electrical machines* [2].

Generating equipment connected to the *Transmission System* must be three-phase.

7.1 Grounding connection

Generating stations must be designed to be compatible at all times with the characteristics of the *Transmission System* grounding connection.

Requirements set out in sections 7.1.1 and 7.1.2 are intended to limit any temporary overvoltage that may arise when *Transmission System* circuit breakers open first to clear a ground fault on the part of the *System* to which a *generating station* is connected.

7.1.1 Effectively grounded *Transmission System*

Most *facilities* on the *Transmission System* are effectively grounded, i.e., meet the following conditions:

$$0 \leq X_0/X_1 \leq 3 \quad \text{and} \quad 0 \leq R_0/X_1 \leq 1$$

Where:

X_1 = positive-sequence reactance of *System*

X_0 = zero-sequence reactance of *System*

R_0 = zero-sequence resistance of *System*

The *generating station* switchyard must be effectively grounded as seen from the high-voltage side.

To satisfy this requirement, the neutral on the high-voltage windings of the step-up transformer(s) used to connect the *generating station* must be grounded. Furthermore, impedance values for the transformer(s) and winding connections must ensure the *generating station* always meets the criteria for effective grounding:

$$0 \leq X_0/X_1 \leq 3 \quad \text{and} \quad 0 \leq R_0/X_1 \leq 1$$

Where:

X_1 = Positive-sequence reactance of *generating station* as seen from high-voltage side of switchyard

X_0 = Zero-sequence reactance of *generating station* as seen from high-voltage side of switchyard
 R_0 = Zero-sequence resistance of *generating station* as seen from high-voltage side of switchyard

If a *generating station* is connected to the *Transmission System* through a *customer facility*, the above-mentioned grounding connection requirements also apply (X_1 , X_0 and R_0 are then evaluated for the high-voltage side of the customer substation). It may be necessary to use the following means to meet those requirements:

- Adding grounding transformer(s) on the high-voltage side of the customer substation;
- Modifying the connection type of existing transformer windings in the power producer substation.

Depending on the characteristics of the *Transmission System* near the connection point, it may be necessary to limit the ground fault current contribution of the *generating station* substation. Additional technical requirements may be set to achieve this, such as adding a reactor on the high-voltage side, between the neutral of each transformer and the ground, or using YN-connected transformers with an appropriate zero-sequence impedance on the high-voltage side (the winding on the low-voltage side is generally delta-connected).

7.1.2 Non-effectively grounded *Transmission System*

In parts of the 69-kV or lower *Transmission System*, the neutral is not effectively grounded and the zero-sequence impedance is then higher than for an effectively-grounded *Transmission System*.

A *generating station* connected to a portion of the *Transmission System* where the neutral is not effectively grounded must be designed taking that fact into account so as to avoid contributing more than 400 A to the single-phase fault current on that portion of the *Transmission System* unless the Transmission Provider agrees otherwise. A grounding transformer of appropriate impedance will also generally be required on the high-voltage side of the switchyard to keep the zero-sequence impedance from becoming capacitive (due, for instance, to the capacitive effect of lines or cables on the *Transmission System* side) and causing significant overvoltages.

7.2 General electrical characteristics of equipment

The electrical characteristics of equipment forming the power producer *facilities* must be compatible with those of the *Transmission System* to which the *facilities* are connected, especially regarding insulation coordination. Table 5 gives current standard values for insulation and short-circuit levels on the *Transmission System*. In designing its *facilities*, the power producer must check with the *Transmission Provider* to confirm the electrical characteristics that apply to the portion of the *Transmission System* to which its *facilities* are to be connected.

Table 5 — Standard insulation and short-circuit levels for Hydro-Québec *Transmission System* equipment

Nominal system voltage ¹ (kV L-L rms)	Rated voltage of equipment (kV L-L rms)	Ground insulation level ²		Standard short-circuit levels ³ (kA sym. rms)
		Lightning (kV p-p)	60 Hz (kV rms)	
69	72.5	350	140	31.5
120	145	550	230	40
161	170	650-750 ⁴	275-325 ⁴	31.5 and 50 ⁵
230	245	850-950 ⁴	360-395 ⁴	31.5 and 50 ⁵
315	330	1050-1175 ^{4,6}	460	31.5 and 50 ⁵

1 – For 44-kV, 49.2-kV, 345-kV and 735-kV systems, insulation and short-circuit levels have not been standardized and must be confirmed by the *Transmission Provider* on a case-by-case basis.
2 – Insulation levels between open contacts of disconnect switches must be higher than the ground insulation level. This requirement also applies to 330-kV circuit breakers.
3 – The X/R ratio specified for these voltage levels is equivalent to 30.
4 – The lower value applies to transformers and shunt reactors protected by surge arresters at their terminals, while the higher value applies broadly to all other equipment.
5 – The short-circuit level depends on the specific characteristics of the *Transmission System* to which the *generating station* is connected.
6 – The switching impulse withstand voltage is 850 kV peak.

7.3 Disconnect switches

To ensure the safety of all personnel working on the *Transmission System*, each connection point in the switchyard must be equipped with a disconnect switch. This disconnect switch constitutes a visible disconnection point, accessible to the *Transmission Provider* for the purpose of isolating the *generating station* from the *Transmission System*. The disconnect switch must be located as close as possible to the connection point, and it must be possible to lock it out in the open position (blades opening upwards forming an angle greater than 90°).

For motorized disconnect switches, it must be possible to disable, uncouple and lock out the drive control mechanism. A device for cutting power to the motor (e.g., using a knife-switch) and a device for installing a padlock on the control box door must be provided. The control tube must also include a locking device equipped with a pin. Furthermore, if the emergency mechanism is a wheel, it must be possible to lock out the external selection switch, and the knife-switches must be visible

through a window when the control box is closed and locked out. If the emergency mechanism is crank-operated, the knife-switches and local control selector switch must be visible through a window when the control box is closed and locked out. Openings for padlocks or locking clamps must have a diameter of 12 mm.

There may be more than one disconnect switch at any power producer *facility*. In some cases, the *Transmission Provider* may allow some device other than a disconnect switch (e.g., a rack-mounted circuit breaker) to be used as a visible disconnection point.

In all cases, the power producer must submit the equipment's specifications to the *Transmission Provider*, which will check that they comply with its safety requirements.

In no instance may a disconnect switch be coupled to a grounding switch on the *Transmission System* side, since such a configuration would automatically ground the connection point when the disconnect switch opens.

7.4 Circuit breakers

Circuit breakers must have adequate insulation withstand and interrupting capacity [e.g., transient recovery voltage (TRV), recovery voltage (RV), short-term withstand current, short-circuit interrupting capacity] to interrupt any kind of fault current within the power producer *facilities* or on any part of the *Transmission System* to which the *generating station* is connected. Particular care must be taken regarding insulation and out-of-phase faults to ensure that circuit breakers have the required interrupting capacity.

7.4.1 Tie breaker

The power producer must equip its *facilities* with one or several tie breakers. The devices must be able to perform an open-close-open (O-C-O) cycle during eight consecutive hours with no power from the *System* in the event of a prolonged power failure.

If a tie breaker has a built-in system for detecting faulty internal states (e.g., low SF₆ density) that can force it to close or disable its normal functioning (e.g., latching up), the power producer must, when a faulty state is detected, remove the breaker in question from service as quickly as possible so as to avoid any damage to its *facilities* or undue *disturbances* on the *Transmission System*. The power producer must submit to the *Transmission Provider* for approval the measures it intends to take to meet this requirement.

7.5 Surge arresters on high-voltage side of switchyard

High-voltage surge arresters must be located on the *generating station* side of the disconnect switch, unless the *Transmission Provider* agrees otherwise, so they may be isolated from the *Transmission System* without de-energizing the *Transmission Provider's* tie line.

Surge arresters must be of the zinc oxide type with no spark gap and appropriately rated for *Transmission System* constraints.

7.6 Synchronous and asynchronous generator voltage unbalances, impedances and time constants

Power producer *facilities*, particularly *synchronous* and *asynchronous generators*, must be designed to withstand, without *tripping*, voltage unbalances of up to 2% (negative-sequence component, V_2/V_1) under steady-state conditions on the *Transmission System* and even greater unbalances for a limited time (e.g., a 50% voltage unbalance under fault conditions).

Following the *interconnection study*, the *Transmission Provider* may impose additional requirements on certain impedance or time constant values for *synchronous generators* (e.g., maximum X''_q/X''_d , maximum X'_d or $T'd_0$) to ensure *Transmission System* stability is maintained. By way of indication, X''_q/X''_d values for *synchronous generators* currently connected to the *Transmission System* generally range from 1.0 to 1.3, while the typical value of X'_d is 0.3 p.u. based on equipment MVA. The typical value of time constant $T'd_0$ is 6.0 seconds.

7.7 Design power factor of generating equipment

Note: For wind *generating stations*, requirements found in this section are superseded by those described in section 12.3.

Power factors specified below set upper and lower bounds for the range of reactive power that the *generating station* must make available to the *System* under steady-state conditions⁹.

7.7.1 Synchronous generators

Synchronous generators synchronized with the *System* must have a rated power factor not exceeding:

- 0.90 in over-excited mode
- 0.95 in under-excited mode

These power factors are specified at the *synchronous generator* terminals.

For a *generating station* with the connection point on the high-voltage side of the switchyard, the power factor in over-excited mode must also not exceed 0.95 at the connection point.

However, if the *interconnection study* shows that reactive power from the *synchronous generators* cannot be completely used on the *Transmission System*, the *Transmission Provider* may accept a rated power factor at the generator terminals, in over-excited mode, greater than 0.9 though not

⁹ If the *generating station* is connected to the *System* through a *customer facility*, a metering system able to distinguish between the industrial consumption and generation parts must be installed; this will allow the real contribution of the *generating station* and its load consumption to be calculated, so as to verify compliance with power factor requirements.

exceeding 0.95. For a *generating station* with the connection point on the high-voltage side of the switchyard, the power factor in over-excited mode must also not exceed 0.97 at the connection point.

Generators of a *generating station* that have an installed capacity of less than 10 MW and that are not required to contribute to voltage regulation, as stipulated in section 6.4.1, must supply sufficient reactive power to maintain a unity power factor on the high-voltage side of the switchyard.

7.7.2 Other types of generating equipment

For any other type of generating equipment, the *generating station* must make available, on the high-voltage side of the switchyard, a range of reactive power corresponding to a leading and lagging power factor not exceeding 0.95. The reactive power available on the high-voltage side of the switchyard must at least correspond to a power factor of 0.95 of the rated power of the *generating units* in service.

A *generating station* that has an installed capacity of less than 10 MW and that is not required to contribute to voltage regulation, as stipulated in section 6.4.1, must supply sufficient reactive power to maintain a unity power factor on the high-voltage side of the switchyard.

7.8 Harmonics produced by generation equipment

Synchronous generators must comply with the harmonic testing requirements set out in International Electrotechnical Commission (IEC) standard 60034-1 – *Rotating electrical machines* [2] or their equivalent. *Asynchronous generators* must perform similarly. Their performance is to be confirmed by testing and documented in the test reports described in Chapter 10 of this document.

7.9 Inertia constant of generating units

The inertia constant of *generating units* within a *generating station* connected to the *Transmission System* must be compatible with the inertia constants of existing *generating stations* in the same region in order to maintain *Transmission System* stability and integrity during *disturbances*, and to minimize the risk of oscillations between *generating stations*. If needed, the *Transmission Provider* will specify, through the *interconnection study*, any minimum inertia constant that applies to *generating units* in the *generating station*.

7.10 Step-up transformers

7.10.1 Taps

Note: For wind *generating stations*, requirements found in this section are superseded by those described in section 12.12.

Unless otherwise stipulated at the time of the *interconnection study*, *generating station* step-up transformers must have taps that allow the transformer ratio to be adjusted according to voltage

conditions on the *Transmission System*. Taps must be selected to avoid hampering present and future operation of the *Transmission System* and to meet section 6.1 requirements.

7.10.2 Winding connections of step-up transformers

Winding connections of *generating station* step-up transformers must comply with requirements regarding *Transmission System* grounding connection set out in sections 7.1.1 or 7.1.2, as applicable.

7.10.3 Impedance values

Following the *interconnection study*, the *Transmission Provider* may specify (maximum or minimum) impedance limits for *generating station* step-up transformers, in accordance with requirements regarding *Transmission System* grounding connection described in sections 7.1.1 or 7.1.2, as applicable.

7.10.4 Energizing

Following the *interconnection study*, the *Transmission Provider* may require power producer *facilities* be equipped with means of mitigating *closing transient disturbances* during step-up transformer energizing operations.

7.11 Possible *Transmission System* voltage changes

The *Transmission Provider* may change the nominal voltage of certain portions of its *Transmission System* from that used at the time the *generating station* is connected.

The *interconnection study* will mention any such planned voltage change. Power producer *facilities* must then be designed to adapt to the multiple voltage levels specified in the study.

7.12 Tie line built by the power producer

To maintain *Transmission System* reliability and safety, a power producer building a tie line to connect its *generating station* to the *Transmission System* must ensure the electrical and mechanical characteristics of the line in question are equivalent to those of a line the *Transmission Provider* would build for a comparable project. The *Transmission Provider* will supply the power producer with specific design requirements based on the type of line and its planned location.

8. Protection System Requirements

8.1 General principles

The power producer is responsible for adequately protecting its *facilities* from *disturbances* that may arise in its *facilities* or on the Hydro-Québec *Transmission System*.

The power producer must also procure and install within its *facilities* protection systems that can effectively protect the *Transmission System*.

Protections installed by the power producer must be coordinated among themselves and with *Transmission System* protection systems.

8.1.1 Selectivity of power producer *facility* protection systems to *Transmission System disturbances*

Systems protecting power producer *facilities* must be selective enough to avoid any inadvertent *generating unit tripping* when *disturbances* occur. More specifically, no protection system must cause, directly or indirectly, *generating unit tripping* for the voltage and frequency deviations given in tables 2, 3 and 4 of sections 6.3.1 to 6.3.3. Equipment that is not likely to be damaged by greater voltage and frequency variations must remain in service beyond the minimum values indicated in those tables.

8.1.2 Automatic reclosing

Unless a special agreement has been reached with the *Transmission Provider* following the *interconnection study*, any automatic *reclosing* of a *generating station* is prohibited, regardless of whether the fault originates within those *facilities* or on the *Transmission System*.

8.2 Grounding connection

If the *generating station* is connected to the *Transmission System* through a *customer facility*, the *Transmission Provider* may require, besides effective neutral grounding, additional protection systems.

If the *generating station* is connected to a portion of the *Transmission System* with non-effective neutral grounding under normal conditions, appropriate protection systems are required.

8.3 Circuit breakers

All 230-kV or higher circuit breakers must have two sets of trip coils with separate cores, each designed for both automatic trip protection circuits. For voltage levels lower than 230 kV, two sets of trip coils with separate cores are required if *Transmission System* protection needs warrant it.

8.4 Protection functions related to *Transmission System* needs

Protection functions that must be implemented to meet the needs of the *Transmission System* are described below. The protection systems in question must, for the zone they are to circumscribe,

detect any kind of fault or *disturbance* that may affect the *Transmission System*, whether it originates in power producer *facilities* or on the *Transmission System*. Protection systems triggered in such situations must isolate the faulted zone from the *Transmission System*.

8.4.1 Protection from faults in power producer facilities

The protection systems the power producer uses to clear faults in its *facilities* must be compatible and coordinated with those used on the *Transmission System*. When triggered, power producer protection systems must quickly, reliably, selectively and safely isolate any kind of fault affecting the *facilities*.

8.4.2 Protection from faults on Transmission System

When triggered, the protection systems the power producer uses to clear faults occurring on the *Transmission System* must quickly, reliably, selectively and safely remove the contribution of the *generating station* to any kind of fault.

Two primary protections (as defined below), each equipped with a trip relay, are required. In some cases, the *Transmission Provider* may require the two primary protections provide a higher level of independence so as to meet the needs of the local *Transmission System* to which the *generating station* is connected.

If the contribution of *generating units* (e.g., *asynchronous generators*) to the *Transmission System* fault is insufficient to allow the use of two primary protection systems, the appropriate protection solutions will be specified in the project-specific complementary technical requirements issued following the *facilities study*.

Primary protections are comprised of relays with the following functions and settings:

- The protection must cover all types of faults: three-phase, two-phase, two-phase-to-ground, and single-phase-to-ground with and without a fault impedance. For high-impedance faults, the fault resistance used must be $R_f = 10 \Omega$, i.e., a zero-sequence component of $3R_f = 30 \Omega$.
- Operation must not be intentionally delayed except as may be required for coordination with *Transmission System* protection systems.
- Protection must be selective. The zone covered by the primary protection must be coordinated with protections in adjacent zones.

It is recommended that protection systems differ in design or in manufacturer. Such protection systems may require telecommunication links.

8.4.3 Voltage protection, frequency protection and remote tripping

Power producer *facilities* and the *Transmission System* require voltage and frequency protections. A *remote tripping* system may also be required.

8.4.3.1 Voltage protection

Note: For wind *generating stations*, requirements found in this section are superseded by those described in section 12.5.1.

Voltage protection must include both an undervoltage function and an overvoltage function.

Voltage protection settings for a *generating station* connected to the *Transmission System* must comply with steady-state voltage ranges given in section 6.1, as well as post-*disturbance* voltage ranges, for the minimum times given in tables 2 and 3. Table 3 shows, for instance, that an overvoltage relay with the trip threshold set to a voltage range of $(1.15 < V \leq 1.20)$ must not trip unless the positive-sequence voltage on the high-voltage side of the switchyard remains continuously above the operating threshold for at least 30 seconds.

It is not necessary to have settings for each of the values given in tables 2 and 3.

8.4.3.2 Frequency protection

Note: For wind *generating stations*, requirements found in this section are superseded by those described in section 12.5.2.

Frequency protection must include both an underfrequency function and an overfrequency function. Protection settings must in no instance interfere with the measures implemented by the *Transmission Provider* to restore *System* frequency following a *disturbance*.

Frequency protection settings for a *generating station* connected to the *Transmission System* must comply with the steady-state frequency range given in section 6.2, as well as post-*disturbance* frequency ranges, for the minimum times given in Table 4. Referring to Table 4, for instance, frequency protection with an operating threshold set in the frequency range $(58.5 \leq F < 59.4)$ must have a minimum time-lag of 11 minutes. If a cycle-counting relay is used (rather than a time delay relay), the number of cycles must be set based on the maximum frequency of the corresponding range.

It is not necessary to have settings for each of the values given in Table 4.

These requirements also apply to a *generating station* connected to the distribution system, to *facilities* of a municipal system or of the SJBR electricity cooperative.

Power producers may use more sensitive underfrequency protection settings provided they are able to compensate any loss of generation. *Islanding* on the power producer's own load or load-shedding agreements with a third party may be used to offset loss of generation should underfrequency protection be tripped. The power producer must demonstrate to the *Transmission Provider* that appropriate procedures have been implemented or that automatic load-shedding agreements have been signed.

8.4.3.3 Remote tripping

The *Transmission Provider* may require that the power producer install a *remote tripping* system under the following circumstances:

- If the line *reclosing* time is short (less than 2 s);
- If unwanted *islanding* may occur;
- As supplementary protection if existing power producer *facility* protections for *Transmission System* faults are not effective or selective enough to ensure adequate protection of the *Transmission System*;
- If self-excitation may occur, as when *islanding* a *generating station* with a capacitive load (e.g., capacitor bank, filters, unloaded line or cable).

Failure of the *remote tripping* system may require *tripping* of the *generating station* or activation of additional line, voltage or frequency protection settings. Appropriate solutions for dealing with the consequences of a *remote tripping* system (telecommunications) failure shall be specified in the project-specific complementary technical requirements.

If *tripping* the *generating station* would lead to excessive *disturbances* on the *Transmission System*, the *Transmission Provider* may require that a second *remote tripping* system be installed.

These requirements also apply to a *generating station* connected to the distribution system, to *facilities* of a municipal system or of the SJBR electricity cooperative.

8.4.4 Breaker failure protection

Breaker failure or equivalent protection is required in order to allow breaker *tripping* in adjacent zones when a breaker used to meet *Transmission System* protection needs fails to trip.

A remote breaker failure protection system must be implemented using a dedicated link to remotely trip breakers at substations contributing to the fault, for faults in power producer *facilities*, if rapid *tripping* is needed to fulfill *Transmission System* requirements.

8.4.5 Protection from other phenomena

It is the power producer's responsibility to adequately protect its *facilities* from overvoltages and other harmful phenomena. Overvoltages may, for instance, be caused by the interaction between the *generating station* and the *Transmission System*, or arise from self-excitation of *synchronous* or *asynchronous generators*, harmonic or subsynchronous resonance, ferroresonance or (current or voltage) unbalances. The *Transmission Provider* may require that the power producer install various systems in its *facilities* to adequately protect the *Transmission System* and third-party *facilities* from such phenomena.

8.5 Equipment related to *Transmission System* protection requirements

8.5.1 Protective and *trip* relays

Protective and trip relays used in protection systems required to meet *Transmission System* needs must be certified by the *Transmission Provider*. The *Transmission Provider* may, however, authorize for a specific project the use of relays with certification pending if it considers them acceptable.

Anti-*islanding* protective relays must only be used for that purpose.

8.5.2 Protection system settings

The power producer must not modify settings for its protections without written authorization from the *Transmission Provider*. The power producer must carry out periodic checks of protective devices it has installed.

8.5.3 Protection system power supply

Protection systems required for the *Transmission System* must be powered using a storage battery, or a pair of storage batteries if the *Transmission Provider* so requires based on *interconnection study* results, since such protection systems must remain functional should the station service supply fail.

Each storage battery must have two chargers that can either run in parallel with the battery or back up each other. Battery backup time must be at least eight consecutive hours for each battery. If station services can be resupplied from another source, battery backup time can be reduced to two or four hours, depending on how long it takes to do so.

8.5.4 Voltage and current transformers

Current and voltage transformers must be installed on each of the three phases to power line protection systems installed to fulfill *Transmission System* needs. Such transformers must have separate secondary windings in order to power independently the two primary line protection systems. The power producer must submit voltage and current transformer specifications to the *Transmission Provider*, which will check that they comply with its current standards.

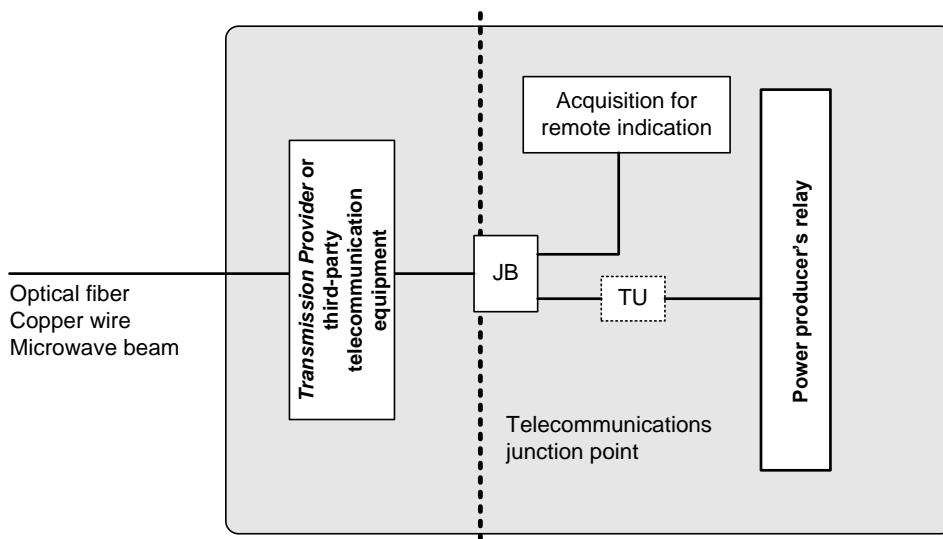
8.6 Telecommunication systems for teleprotection functions

The *Transmission Provider* supplies, installs and maintains equipment required for transmitting teleprotection signals.

As shown by Figure 4, the telecommunications junction point is the boundary point between the Hydro-Québec (or third-party) telecommunications network and the power producer's equipment. This point is generally located at the junction box connecting telecommunication equipment (at the end of the link) to the tone unit (TU) (when present) or to the protective relay of the power producer facilities.

The power producer must supply electrical power, as well as adequate secure space for installing all this equipment; the power producer must also install all required ductwork, junction boxes, as well as tone or teleprotection units that are part of the protection systems.

Figure 4 – Position of certain power producer devices relative to the telecommunications junction point



FOR REFERENCE PURPOSES ONLY

9. Real-time operation requirements

9.1. Data required for real-time *Transmission System* operation

To operate the *Transmission System* efficiently, the *Transmission Provider* requires real-time data, in a form compatible with its equipment, from each *generating station* belonging to the power producer *facilities*. The data required depends on *generating station* capacity and is given in Table 6.

The power producer must provide and install in its *facilities* all sensors required to transmit the required data to the *Transmission Provider*. Upon request by the *Transmission Provider*, the power producer must take part in tests two months before the *generating station* is commissioned, or at any other date agreed upon with the *Transmission Provider*, to check that remote indication is working properly.

The equipment used by the power producer to provide data required by the *Transmission Provider* is subject to the latter's approval.

Switchyard equipment must comply with the *Transmission Provider's* identification (nomenclature), which shall be provided to the power producer during project implementation.

Table 6 – Data required by the *Transmission Provider* for the telecontrol centre (TC) and *System* control centre (SCC)¹⁻²

REQUIRED DATA	CAPACITY < 50 MW		CAPACITY ≥ 50 MW	
	TC	SCC	TC	SCC
Total <i>generating station</i> generation in MW and Mvar		Measurement Except if impact on <i>System</i> deemed negligible		Measurement
<i>Generating unit</i> circuit breaker	State ⁷ If required for <i>System</i> operation		State ⁷	State
<i>Generating unit</i> disconnect switch	State ⁸ If required for <i>System</i> operation		State ⁸	State
<i>Generating unit</i> MW, Mvar, kV and A	Measurement If required for <i>System</i> operation		Measurement	Measurement
Number of wind generators in service		Number		Number
Tie breaker	State Except if impact on <i>System</i> deemed negligible		State	State
MW, Mvar, kV and A at connection point(s)	Measurement Except if impact on <i>System</i> deemed negligible		Measurement	Measurement
Water level (fore- and tailbay)				Level
<i>Generating unit</i> P _{max}				Measurement
Generation rejection, LFC ³ – other special protection systems			If controlled, status, measurement and control signals transmitted To be specified, if applicable	If controlled, status, measurement and control signals transmitted To be specified, if applicable
Acquisition unit	State		State	State
Telephone link (voice)	Note 4		Note 4	

REQUIRED DATA	CAPACITY < 50 MW		CAPACITY ≥ 50 MW	
	TC	SCC	TC	SCC
Breaker or switch used as the station service supply point			State	
Status and alarm signals ⁵	State		State	
Stabilizer ⁶			State If applicable	State If applicable

- 1 – Requirements for remote control of *generating station* are not included, nor are those for generation management
- 2 – For wind *generating stations* and *generating stations* with capacity lower than 50 MW, information sent to SCC may transit through TC
- 3 – Load-frequency control
- 4 – Link to contact *generating station* operator 24/24 x 7/7 (directly, without extension number, e-mail or voice mailbox)
- 5 – Certain signals or alarms may be required to indicate the state of tone units or operation of protections (e.g., backup protection) that can affect *Transmission System*
- 6 – Indication of stabilizer state is required wherever installed (see section 6.4.2)
- 7 – Bus line feeder circuit breaker for wind *generating station*
- 8 – Bus line feeder disconnect switch for wind *generating station*

Real and reactive power measurement requirements given in Table 6 also apply to a *generating station* connected to the distribution system, to *facilities* of a municipal system or of the SJBR electricity cooperative.

Section 12.6 covers specific information required for the real-time operation of wind *generating stations*.

9.2 Telecommunication systems for operations functions

The *Transmission Provider* generally supplies and installs telecommunication equipment needed to transmit, from power producer *facilities*, data enabling it to operate the *Transmission System* effectively. The *Transmission Provider* is also responsible for the maintenance of any such equipment.

As shown by Figure 4 in section 8.6, the telecommunications junction point is the boundary point between the Hydro-Québec (or third-party) telecommunications network and the power producer’s equipment. This point is generally located at the junction box (JB) connecting telecommunication

equipment (at the end of the link) to the power producer equipment used to acquire remote indication data.

The equipment to install, interface points and other characteristics relevant to providing the required services will be specified to the power producer at the *facilities study* stage.

The power producer must provide adequate secure space for installing all this equipment, and install all required ductwork and junction boxes.

10. Verification of compliance with requirements

10.1. Verification by the *Transmission Provider*

The *Transmission Provider* shall be authorized to verify that systems and equipment installed by the power producer in the *generating station* to meet *Transmission Provider* requirements are working properly, including data transmission systems and the settings of protection systems, speed governors, voltage regulators and stabilizer, etc.

10.2 Verification by the power producer

The power producer must make all necessary verifications to demonstrate that its *facilities* comply with *Transmission Provider* requirements.

Two types of verifications are required:

a) Initial verifications

During *generating station* startup or following a substantial change of an existing *generating station*, the power producer must verify that its *facilities* meet *Transmission Provider* requirements and achieve stated levels of performance.

b) Periodic verifications

At intervals set by the *Transmission Provider*, the power producer must verify that its *facilities* have maintained their characteristics and their levels of performance.

Such verifications also aim to ensure that information submitted to the *Transmission Provider* for steady-state and dynamic modeling of *generating stations*, in the course of its dynamic simulation studies, matches the actual equipment characteristics. *Transmission Provider* requirements regarding verification and validation of models and power producer equipment are set out in Appendix F.

To facilitate such verifications, the power producer must anticipate the required means and tools: measurement points, data archiving, ways to isolate regulation and protection systems, test signal input points, etc.

Periodic verifications also include checking underfrequency trip relay settings for all 20-MW or higher *generating units*, at intervals not exceeding those given in Table 7.

Table 7 – Maximum intervals between period checks of underfrequency trip relays for 20 MW or more *generating units*

	Protection functions provided by a set of components		
	Without self-monitoring or self-checking capabilities (Note 1)	With self-monitoring or self-checking capabilities (Microprocessor technology) (Note 2)	With self-monitoring or self-checking capabilities (Microprocessor technology) (Note 3)
All protection groups	4 years	6 years	8 years

Note 1: Analog signal processing and logic functions are implemented using either electromechanic or electronic components, or both types of components. Protection functions that are implemented using components without self-monitoring capabilities include electromechanical relays and electronic relays (or static relays).

Note 2: Analog signal processing and logic functions are performed digitally using microprocessors. Digital components have self-monitoring or self-checking capabilities for their analog or digital modules, as well as their logic functions. Any anomaly is reported through an alarm raised at the control centre. Personnel on duty round the clock is able to perform any required verification should a problem arise.

Note 3: Analog signal processing and logic functions are performed digitally using microprocessors. In addition to the characteristics described in Note 2, digital components must have self-monitoring or self-checking capabilities covering the integrity of AC voltage and current signals. Any anomaly is reported through an alarm raised at the control centre. Personnel on duty round the clock is able to perform any required verification should a problem arise.

10.3 Power producer equipment test reports

Before commissioning its *generating station*, the power producer must submit to the *Transmission Provider* test reports for its equipment to demonstrate that its *facilities* comply with the requirements described herein.

The power producer must specifically supply to the *Transmission Provider* test measurements for the electrical characteristics of its equipment as given below:

- For step-up transformers supplied by the power producer, a copy of manufacturer test reports giving:
 - Rated power and voltage, and power at each tap
 - Number of taps and regulation range for each tap
 - Impedance (resistance and reactance) at each tap, including zero-sequence impedance if type tests have been run
 - Exciting current (at 80%–115% of rated voltage)
 - Winding connection
 - Copy of each transformer’s nameplate
- For *synchronous* and *asynchronous generators*, harmonic test results, in accordance with section 7.8.
- For *generating units*:
 - Validation tests required by the *Transmission Provider* regarding *synchronous* and *asynchronous generator* capacity and characteristics; voltage regulator, excitation system, stabilizer and speed governor parameters etc. are specified to the power producer for each *generating station* connection project based on the type of generating equipment used. Such tests must allow validation of the dynamic models and associated parameters supplied by the power producer to the *Transmission Provider*.

11. Requirements regarding event recorders

Line protection relays certified by the *Transmission Provider* have event and disturbography recording capabilities. The power producer agrees to extract and archive data recorded by protective relays that protect the *Transmission System* and supply such data to the *Transmission Provider* on request following any event. The power producer must further retain such recordings by systematically collecting them following each line protection relay *tripping*.

Within a reasonable time frame that shall not exceed 10 business days, the power producer must forward the data indicated below to the following e-mail address: terapporteveproducteur@hydro.qc.ca:

- Any difference between the time recorded by the relay and the real time
- COMTRADE format files of the disturbography function
- Event recording files

The *Transmission Provider* shall supply settings required to implement this function.

The *Transmission Provider* may require that the power producer incorporate into its *facilities* dedicated event analysis instruments (e.g., event loggers, disturbance recorders).

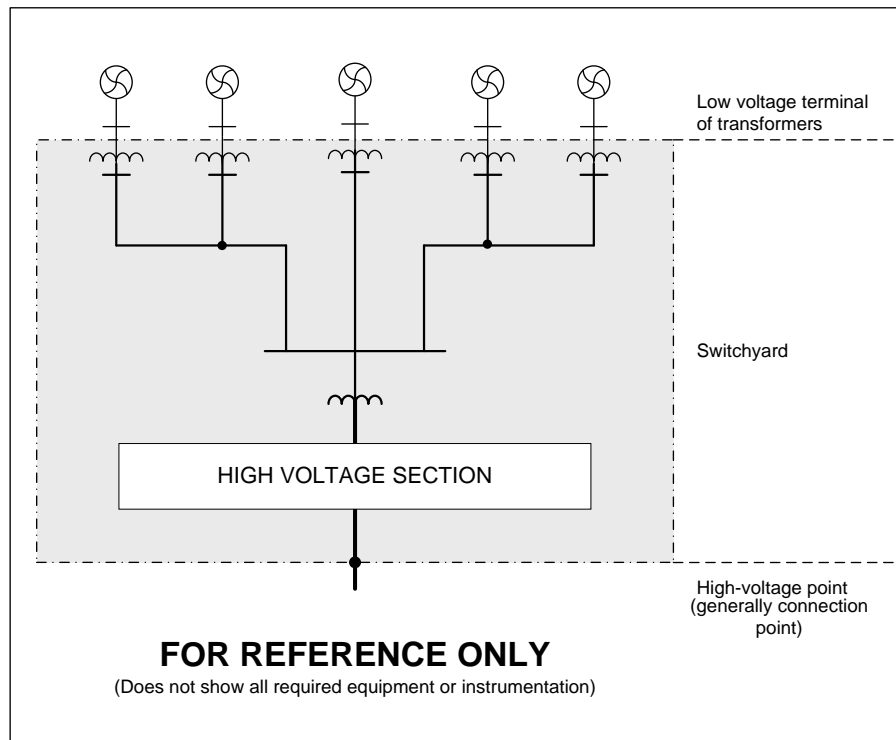
12. Complementary requirements specific to wind *generating stations*

The requirements described in this section cover complementary technical aspects specifically related to wind *generating stations*. They either complement or supersede requirements described in other sections that contain a reference to Chapter 12.

12.1 Switchyard

Figure 5 below is a schematic diagram of a switchyard for a wind *generating station* connected to the *Transmission System*.

Figure 5 – Wind *generating station* switchyard



In addition to the description given in section 5.1, and strictly for the purpose of applying technical requirements, the switchyard is deemed to include any compensation equipment added by the power producer to the wind *generating station* in order to comply with requirements described in the sections below.

12.2 Wind generating station response to disturbances on the Transmission System

Wind *generating stations* must remain in service, without wind generator *tripping*, directly or indirectly, when voltage and frequency deviations occur following a *disturbance*, for the durations given in Figure 6 and tables 7 and 8.

12.2.1 Wind generating station response during low voltage ride through (LVRT)

All wind *generating station* equipment must remain in service when, following a *disturbance*, the positive-sequence voltage on the high-voltage side of the switchyard remains above the continuous curve in Figure 6.

No blocking of wind generators or any other equipment is authorized unless agreed otherwise with the *Transmission Provider*.

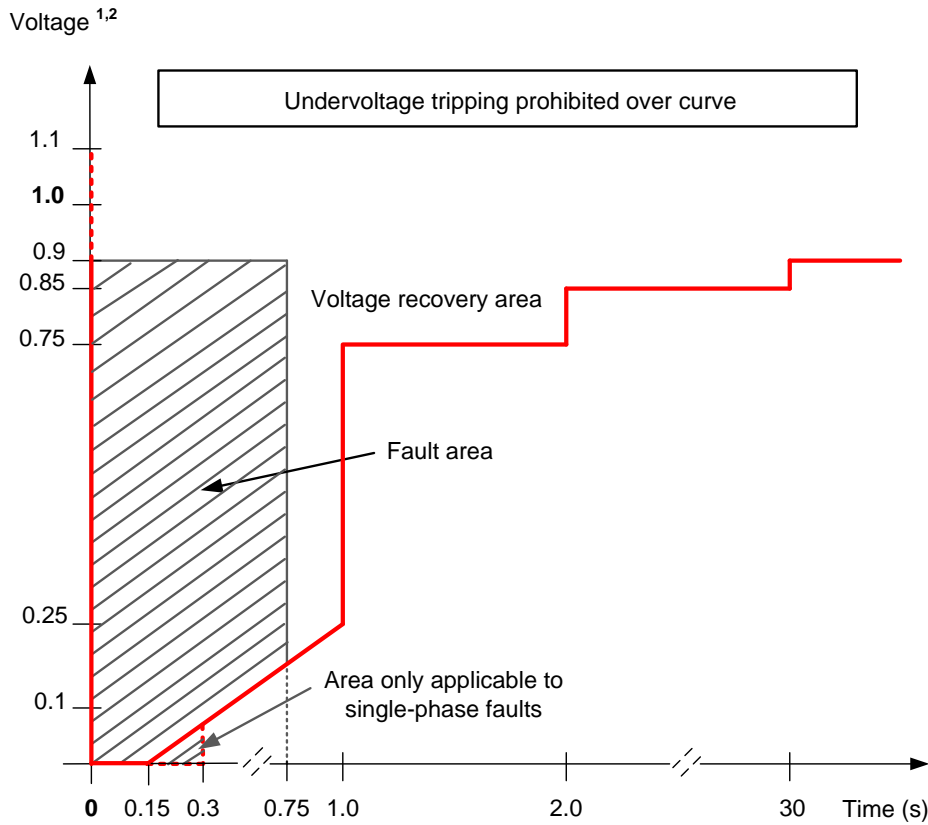
Within the hatched area in Figure 6 (which extends to 0.75 s, and includes the area delimited by dotted lines between 0.15 and 0.3 s), low voltage ride through requirement is based on the measurement of each phase-to-ground voltage on the high-voltage side of the switchyard.

Figure 6 thus defines the required low voltage response capacity of a wind *generating station* in the event of a balanced or unbalanced-grid fault on the *Transmission System* (including the high-voltage side of the switchyard), during both the fault itself and the voltage recovery period after it has been cleared. For information purposes, faults listed below are especially taken into account:

- Three-phase fault cleared in 0.15 s
- Two-phase fault or two-phase-to-ground fault cleared in 0.15 s
- Phase-to-ground fault cleared in 0.3 s
- Any fault with a residual phase-to-ground voltage on the high-voltage side of the switchyard cleared in 0.75 s

A necessity to remain in service during longer faults or voltage dips may be agreed upon with the power producer if such a solution is more advantageous overall.

Figure 6 – Low voltage ride through during which the wind *generating station* must remain in service following a *disturbance*



1. Positive-sequence voltage on high-voltage side of switchyard
2. Each phase-to-ground voltage on high-voltage side of switchyard within hatched area

12.2.2 Wind generating station response during overvoltage

All wind *generating station* equipment must remain in service when overvoltages occur following a *disturbance* for the durations given in Table 8.

Table 8 – Overvoltage ranges vs. minimum time during which all wind *generation station* equipment must remain in service following a *disturbance*

Overvoltage (p.u.) ¹	Minimum time (s)
$1.0 \leq V \leq 1.10$	Permanently
$1.10 < V \leq 1.15$	300
$1.15 < V \leq 1.20$	30
$1.20 < V \leq 1.25$	2
$1.25 < V \leq 1.40$ ²	0.10
$V > 1.40$ ^{2,3}	0.033

Note 1 – Positive-sequence voltage on high-voltage side of switchyard.

Note 2 – Temporary blocking is allowed, after a 0.022 s delay, when the positive-sequence voltage exceeds 1.25 p.u. However, normal operation must resume once the voltage drops back below the 1.25 p.u. threshold.

Note 3 – The *Transmission Provider* also allows overvoltage-triggered temporary blocking at phase-to-ground RMS voltages greater than 1.4 p.u., as measured at wind generator terminals, on one or multiple phases, after a minimum delay of 0.022 s. However, normal operation must resume once the voltage drops back below the 1.25 p.u. threshold.

12.2.3 Wind generating station response to frequency variations

All wind *generating station* equipment must remain in service when frequency variations occur following a *disturbance* for the durations given in Table 9.

The wind *generating station* must in addition remain in service during a *System* frequency variation ranging from -4 Hz/s to +4 Hz/s following a *disturbance*.

Requirements regarding frequency variations also apply to a wind *generating station* connected to the distribution system, to *facilities* of a municipal system or of the SJBR electricity cooperative.

Table 9 – Frequency ranges vs. minimum time during which all wind *generating station* equipment must remain in service following a *disturbance*

Frequency (Hz)	Minimum time
$F \geq 61.7$	Instantly
$61.5 < F < 61.7$	1.5 min
$60.6 < F \leq 61.5$	11 min
$59.4 \leq F \leq 60.6$	Permanently
$58.5 \leq F < 59.4$	11 min
$57.5 \leq F < 58.5$	1.5 min
$57.0 \leq F < 57.5$	10 s
$56.5 \leq F < 57.0$	2 s
$55.5 \leq F < 56.5$	0.35 s
$F < 55.5$	Instantly

12.3 Voltage regulation and power factor

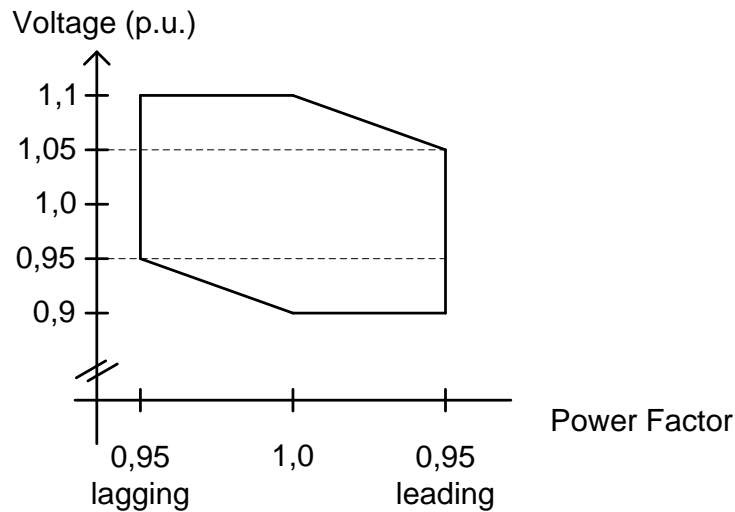
The wind *generating station* must contribute to *Transmission System* voltage regulation in a continuous, dynamic and quick manner.

The voltage regulation system must operate continuously so as to regulate the voltage on the high-voltage side of the switchyard.

Thus, the wind *generating station* must be equipped with an automatic voltage regulation system. It must be able to supply and absorb the amount of reactive power corresponding to a leading and lagging power factor less than or equal to 0.95, as seen on the high-voltage side of the wind *generating station* switchyard. The voltage regulation system must have a permanent droop adjustable between 0% and 10%.

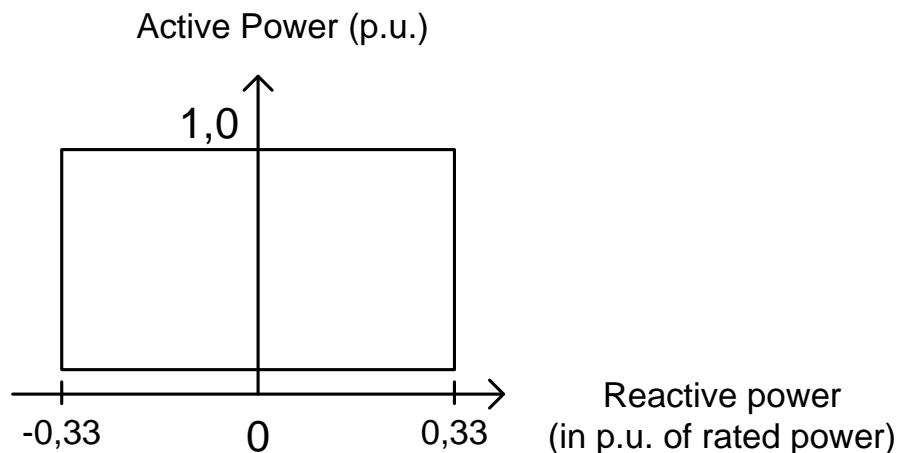
Reactive power must be available over the full voltage and frequency range under normal operating conditions (voltage: 0.9–1.1 p.u.; frequency: 59.4–60.6 Hz). However, at voltages less than 0.95 p.u., the wind *generating station* is not required to absorb reactive power corresponding to a lagging power factor of 0.95, as shown in Figure 7. It still must be able to supply reactive power corresponding to a leading power factor of 0.95. Similarly, at voltages greater than 1.05 p.u., the wind *generating station* is not required to supply reactive power corresponding to a leading power factor of 0.95, but it still must be able to absorb the reactive power corresponding to a lagging power factor of 0.95.

Figure 7 – Reactive power available on high-voltage side of switchyard vs. voltage



In addition to satisfying the concept illustrated in Figure 7, the reactive power available on the high-voltage side of the switchyard, with relation to the variable real power of wind generators in service, must at least reach 0.33 p.u. (i.e., an equivalent power factor of 0.95) of the rated power of the wind generators in service, as shown in Figure 8.

Figure 8 – Reactive power available on high-voltage side of switchyard vs. real power of wind generators in service



If the *interconnection study* shows that reactive power from the wind *generating station* cannot be completely used on the *Transmission System*, the *Transmission Provider* may accept a power factor greater than 0.95 though not exceeding 0.97.

The voltage regulation system must be designed to ensure any reactive power supplied or absorbed by a wind *generating station* reaches 63% of its final value within a delay of approximately 0.033 s in the advent of a large and sudden voltage variation on the *Transmission System*. The power producer must apply the voltage regulation system settings given by the *Transmission Provider*.

Dynamic regulation cannot rely on the *closing* or *tripping* of a shunt device. Furthermore, some parts of the *Transmission System* do not allow the addition of banks of shunt capacitors (it is up to the *Transmission Provider* to settle this issue).

Voltage regulation in a wind *generating station* may be assured by the wind generator itself or by other equipment (e.g., synchronous compensator or STATCOM) added to the *generating station* by the power producer. No matter what design is adopted, voltage regulation performance of a wind *generating station* must always meet the requirements set out in this section.

In the case of a wind *generating station* with a rated power of less than 10 MW, the *Transmission Provider* may waive the requirement for an automatic voltage regulation system, especially when the short-circuit level at the connection point is much higher than the rated capacity of the wind *generating station*, after completing the *interconnection study*. The wind *generating station* must then supply sufficient reactive power to maintain a unity power factor on the high-voltage side of the switchyard.

12.4 Frequency control

Wind *generating stations* with a rated power greater than 10 MW must be equipped with a frequency control system.

Such a system enables wind *generating stations* to help restore *System* frequency in the advent of *disturbances* and thus maintain the current level of performance with regards to frequency control on the *Transmission System*.

Different requirements apply to underfrequency conditions (during which the *System* relies on the inertial response of wind generators) and overfrequency conditions (where the *System* relies on continuous frequency regulation).

12.4.1 Underfrequency control (inertial response)

The inertial response takes the form of a momentary overproduction that limits the frequency drop after a major loss of generation on the *System*. This control system will only be used to handle significant frequency variations, but it must remain in service continuously. For *disturbances* that bring underfrequency (<60.0 Hz) conditions, the inertial response system used to comply with this requirement must assure *System* performance levels that the characteristics indicated below may provide:

- Full overproduction activated at a given frequency threshold or overproduction proportional to frequency deviation;
- Dead band adjustable from -0.1 Hz to -1.0 Hz with respect to nominal frequency (60 Hz);
- Maximum momentary real power overproduction equal to at least 6% of rated power of each wind generator in service;
- Maximum overproduction duration of at least 9 s (from the start of power ramp up to the start of power ramp down);
- Rise time to reach maximum overproduction limited to 1.5 s or less;
- Real power decrease during energy recovery (if needed) limited to approximately 20% of rated power;
- Operational for every wind generator in service whenever their generation level reaches approximately 25% of the rated power;
- Able to operate repeatedly with a 2 min delay after the end of the recovery period following the previous operation.

Wind *generating station* performance takes precedence over individual wind generator performance. The power producer must demonstrate the operation and performance of the inertial response system design based on tests performed on actual wind generators.

The *Transmission Provider* may also consider any other solution that would allow it to reach the same performance objectives with regards to underfrequency control.

12.4.2 Overfrequency control

In order to handle overfrequency *disturbances* (>60.0 Hz), every wind generator within a wind *generating station* must be equipped with a frequency control system with a permanent droop (σ) adjustable over a range of at least 0 to 5% and a dead band adjustable between 0 and 0.5 Hz.

The power producer must apply the voltage regulation system settings given by the *Transmission Provider*.

Requirements regarding frequency control also apply to a wind *generating station* connected to the distribution system, to *facilities* of a municipal system or of the SJBR electricity cooperative.

12.5 Protection systems

Systems protecting power producer *facilities* must be selective enough to avoid any inadvertent *tripping* when *disturbances* occur. More specifically, no protection or control system must cause, directly or indirectly, wind generator *tripping* for the voltage and frequency deviations given in sections 12.2.1, 12.2.2 and 12.2.3. Wind generator protection systems must take into account, in particular, voltage variations associated with the collector system and step-up transformers, since requirements described in sections 12.2.1 and 12.2.2 concern the high-voltage side of the switchyard.

12.5.1 Voltage protection

Voltage protection must include both an undervoltage function and an overvoltage function. Voltage protection settings must comply with steady-state voltage ranges given in section 6.1, as well as post-*disturbance* voltage ranges, for the durations shown in Figure 6 and those given in Table 8. Referring to Table 8, for instance, an overvoltage protection with an operating threshold set in the voltage range ($1.15 < V \leq 1.20$) must have a minimum time-lag of 30 s.

Voltage protection must be coordinated with other existing protection systems and initiate *tripping* of the wind *generating station*, when required, to prevent it from operating under unacceptable voltage conditions.

It is not necessary to have settings for each of the values given in Table 8.

12.5.2 Frequency protection

Frequency protection must include both an underfrequency function and an overfrequency function. Protection settings must in no instance interfere with the measures implemented by the *Transmission Provider* to restore *System* frequency following a *disturbance*.

Frequency protection settings must comply with the steady-state frequency range given in section 6.2, as well as post-*disturbance* frequency ranges, for the minimum durations given in Table 9. Referring to Table 9, for instance, a frequency protection with an operating threshold set in the frequency range ($58.5 \leq F < 59.4$) must have a minimum time-lag of 11 minutes.

These requirements also apply to a wind *generating station* connected to the distribution system, to *facilities* of a municipal system or of the SJBR electricity cooperative.

The power producer may use more sensitive underfrequency protection settings provided it demonstrates to the *Transmission Provider* that automatic load-shedding agreements have been signed with a third party to offset any loss of generation should underfrequency protection trip its *generating station*. Frequency protection must be coordinated with other existing protection systems and initiate *tripping* of the wind *generating station*, when required, to prevent it from operating under unacceptable frequency conditions.

It is not necessary to have settings for each of the values given in Table 9.

12.6. Data required for real-time *Transmission System* operation

Every *generating station* must provide the required data in real-time and in a format compatible with the *Transmission Provider's* equipment. Required data is described in Table 6 (section 9.1).

For a wind *generating station*, guidance on communication devices is provided in the document entitled *Requirements Specification – Wind Power Data Acquisition*¹⁰. The power producer must provide and install in its switchyard all necessary sensors to transmit the required data to the *Transmission Provider*. Upon request by the *Transmission Provider*, the power producer must also take part in tests two months before its wind *generating station* is commissioned, or at any other date agreed upon with the *Transmission Provider*. Equipment used by the power producer to transmit the required data to the *Transmission Provider* is subject to the latter's approval.

Real and reactive power measurement requirements given in Table 6 (section 9.1) also apply to a wind *generating station* connected to the distribution system, to *facilities* of a municipal system or of the SJBR electricity cooperative.

12.7 Technical information to submit to the *Transmission Provider* to conduct its studies

The power producer must supply data and a detailed model of the wind *generating station* required to conduct dynamic simulation studies, as specified in Appendix A. If the models supplied do not comply with IEEE¹¹ standards, the power producer must supply compliance tests that demonstrate the models accurately represent the response of the actual wind *generating station*. Besides the information required in Appendix A, the power producer must submit wind generator oscillation characteristics (e.g., natural frequency and damping) for mechanical or electrical *disturbances*.

¹⁰ Reference provided only for explanatory and informative purposes.

¹¹ Institute of Electrical and Electronics Engineers.

The power producer must also provide a detailed description of the strategies used by the real power, reactive power, voltage and frequency control systems under the operating conditions described in sections 6.1 and 6.2.

Given the diverse and rapidly evolving nature of technology used in wind *generating stations*, the power producer must submit to the *Transmission Provider* test results demonstrating that the wind *generating station* in question meets the voltage and frequency requirements described in sections 12.2.1, 12.2.2 and 12.2.3.

The power producer must also provide, in the form of an EMPT model, all information and data required to conduct studies on transient electromagnetic phenomena, as specified in Appendix B.

12.8 Maximum up- and down-ramp rates

The wind *generating station* must be designed and built to comply with the following maximum ramp rates when up-ramping or voluntary down-ramping output:

- Minimum ramp-up time adjustable from 2 to 20 minutes for a wind *generating station* output variation from 0 MW (stopped) to P_{\max} (maximum output)
- Minimum ramp-up time adjustable from 2 to 20 minutes for a wind *generating station* output variation from P_{\max} (maximum output) to 0 MW (stopped)

12.9 Wind generator shutdown when very cold weather or high winds are forecast

The wind *generating station* must be designed and built to allow their gradual shutdown over a period of 1 to 4 hours when forecasted cold temperatures or high winds require their shutdown.

12.10 Stabilizer

The wind *generating station* must be designed and built so it can be equipped with a stabilizer.

The wind *generating station* connected to the *Transmission System* must have stable behavior so it can help maintain *Transmission System* stability and restore voltage and frequency when *disturbances* occur. Otherwise, the *Transmission Provider* may require that the power producer *facilities* be equipped with a stabilizer. The stabilizer will then be designed jointly by the *Transmission Provider* and the manufacturer. The power producer must apply the settings given by the *Transmission Provider*.

12.11 Limiting real power

Given *Transmission System* operating constraints and requirements, the *Transmission Provider* may require that the power producer *facilities* be equipped with a control system capable of responding to a command to limit real power and other commands.

12.12 Switchyard step-up transformers

Unless stipulated otherwise at the time of the *interconnection study*, wind *generating station* switchyard step-up transformers must be equipped with an on-load tap changer and a voltage regulator that allow the transformer ratio to be adjusted according to voltage conditions on the *Transmission System* over a minimum range of $\pm 10\%$.

Following the *interconnection study*, the *Transmission Provider* may also require power producer *facilities* be equipped with means of mitigating *closing* transient *disturbances* during switchyard step-up transformer energizing operations.

List of mandatory reference documents

[#]	Title or name	Section	Link
1	Technical Requirements for the Connection of Customer Facilities to the Hydro-Québec Transmission System	3., 5.2.2	www.hydroquebec.com/transenergie/fr/commerce/raccordement_transport.html
2	IEC 60034-1 – Rotating electrical machines	7., 7.8	www.iec.ch/

The *Transmission Provider* must display on its website a hyperlink pointing to the website of the following organization, where it is possible to obtain copyrighted standards:

- International Electrotechnical Commission

Appendix A

Technical information required by the *Transmission Provider* to conduct its studies

Notes

- The power producer is responsible for the validity of information (data, models and associated parameters) submitted by itself or one of its suppliers to the *Transmission Provider* so that the latter may conduct the studies required to assess the impact of connecting a *generating station* to the *Transmission System*. If the *generating station* does not behave according to the models and parameters submitted, the *Transmission Provider* may, if needed, re-estimate the cost of connecting the *generating station* to the *Transmission System*; the power producer shall assume the cost of any additional studies and *Network Upgrades*.
- As a member of various bodies responsible for power *System* reliability [Northeast Power Coordinating Council, Inc. (“NPCC”), Northern Electric Reliability Corporation (“NERC”)], the *Transmission Provider* may be asked to share with its counterparts information collected during projects covered by a connection agreement between the power producer and itself.

1. Scheduled commissioning date

2. Location diagram for power producer *facilities*

3. General information on power producer *facilities*

- Type of generation (e.g. hydropower, thermal or wind)
- Installed capacity, anticipated capacity at annual peak load and projected ultimate capacity
- Number of *generating units*

4. Power producer equipment characteristics

(Resistance and reactance in p.u. based on equipment MVA)

- *Synchronous generators:*
 - Type (round rotor/salient pole)
 - Generator speed in RPM
 - Damper windings (connection method)
 - Design ambient temperature (°C)
 - Temperature rise at rated power (°C)
 - Coolant temperature (°C)
 - Rated power and voltage
 - Rated power factor in over-excited and under-excited modes
 - Unsaturated direct-axis synchronous reactance (X_d)
 - Unsaturated quadrature-axis synchronous reactance (X_{qi})
 - Direct-axis transient reactance – unsaturated (X'_{di}) and saturated (X'_{dv})
 - Quadrature-axis transient reactance – unsaturated (X'_{qi}) and saturated (X'_{qv})
 - Direct-axis subtransient reactance – unsaturated (X''_{di}) and saturated (X''_{dv})
 - Quadrature-axis subtransient reactance – unsaturated (X''_{qi}) and saturated (X''_{qv})
 - Positive-sequence leakage reactance (X_1)
 - Negative-sequence reactance (X_2)
 - Time constants T'_{do} (and corresponding temperature in °C), T'_{qo} , T''_{do} and T''_{qo}
 - Armature resistance, by phase (R_a) and corresponding temperature in °C
 - Stator forward resistance (R_1) at 60 Hz and corresponding temperature in °C
 - Reference generator field current (I_{fg}) corresponding to rated no-load voltage on straight-line (air gap) portion of generator curve
 - Saturation curve of generators
 - Saturation coefficients S_{gu} and S_{g1}
 - Inertia constant H in kW/s/KVA (for each *generating unit*, with and without turbine)
- *Asynchronous generators:*
 - Design ambient temperature (°C)
 - Temperature rise at rated power (°C)
 - Coolant temperature (if applicable)
 - Rated power and voltage
 - Power factor at 100%, 75% and 50% of rated power
 - Stator leakage reactance (X_s)

- Stator resistance (R_s)
- Rotor leakage reactance (X_r)
- Rotor resistance (R_r)
- Magnetizing reactance (X_m)
- Locked rotor reactance (X_{rb})
- Open-circuit reactance (X_o)
- Time constant T'_{do}
- Inertia constant H (for each *generating unit*)
- Torque-slip curve
- Steady-state slip
- Voltage regulator, excitation system and stabilizer, based on guidance provided in the following documents:
 - Detailed model and associated parameters, referring to standard IEEE model (IEEE Standard 421.5, *IEEE Recommended Practice for Excitation System Models for Power System Stability Studies*¹²), or, if IEEE standard model not available:
 - Model that the *Transmission Provider* can use in its dynamic simulation studies with Siemens PTI's Power System Simulator (PSS/E) software, along with associated parameters
- Turbine and speed governor, based on guidance provided in the following documents:
 - Detailed model and associated parameters, referring to standard IEEE model: (*Dynamic Models for Steam and Hydro Turbines in Power System Studies*, IEEE Transactions on Power Apparatus and System, vol. PAS-92, pp. 1904-1915, 1973¹³); (*Hydraulic Turbine and Turbine Control Models for System Dynamic Studies*, IEEE Transactions on Power Systems, vol. 7, no 1, Feb. 1992, pp. 167-179¹⁴); (*Dynamic Models for Combined Cycle Plants in Power System Studies*, IEEE 94 WM 185-9 PWRS, Working Group on Prime Mover and Energy Supply Models for System Dynamic Performance Studies¹⁵); or if no IEEE model is available:

¹² Reference provided only explanatory and informative purposes.

¹³ See note 12.

¹⁴ See note 12.

¹⁵ See note 12.

- Model that the *Transmission Provider* can use in its dynamic simulation studies with Siemens PTI's Power System Simulator (PSS/E) software, along with associated parameters
- Wind *generating stations*:
 - Detailed model and associated parameters, referring to standard IEEE model or, if no IEEE standard model is available:
 - Full model that the *Transmission Provider* can use in its dynamic simulation studies with Siemens PTI's Power System Simulator (PSS/E) software. The power producer must also provide relevant technical documentation, block diagrams, data and parameters. The model must allow all *generating station* wind generators to be represented as a single wind generator and must be functional over its entire range of real and reactive power. The wind *generating station* model must contain a detailed model of any rotating machinery, including a multimass model of the rotor and blades. It must be functional with a time step exceeding 4 ms. If voltage regulation in the wind *generating station* is achieved using additional compensation equipment in the switchyard, the power producer must provide a detailed model of that equipment based on a standard IEEE model, as well as associated parameters. If no IEEE model is available, the power producer must provide a model that the *Transmission Provider* can use in its dynamic simulation studies with Siemens PTI's Power System Simulator (PSS/E) software, along with associated parameters.
 - If models provided by the power producer are not IEEE standard models, the power producer must commit to updating them for the entire period during which the equipment in question will remain in service on the *System*. In particular, updates may be required whenever the equipment undergoes a hardware or software change, or as the Siemens PTI's Power System Simulator (PSS/E) software evolves.
- Step-up transformers (when supplied by the power producer):
 - Number
 - Rated capacity and voltage
 - Power and corresponding cooling method
 - Positive- and zero-sequence impedances
 - Winding resistance
 - Coupling (i.e., winding connection)
 - Number of taps and regulation range
 - Exciting current (at 80%–115% of rated voltage)
 - Tap changer parameters (if applicable)
- Circuit breakers:
 - Main characteristics in voltage and current

- Insulation levels
- Interrupting capacity
- Shunt capacitor banks or filters:
 - Power
 - Filtered harmonics and layout of RLC components
 - *Closing* strategy
- Surge arresters:
 - Type
 - Rated characteristics
 - Protection characteristics

5. Single-line diagram of *facility* planned by power producer

Schematic diagram showing power transformers, switchgear position and operating mode (NO/NC), as well as positions of instrument transformers, surge arresters and circuit breakers.

A preliminary control and protection diagram is recommended.

6. Annual generation pattern projected by power producer

Capacity factor of *generating station* and average monthly generation in terms of energy (GWh) and power for a typical year.

Appendix B

Information required by *Transmission Provider* for wind *generating station* modeling using EMTP-RV

Information described in this section is necessary to allow the *Transmission Provider* to conduct transient-state studies essential for a detailed analysis of how the *Transmission System* will behave once the wind *generating station* is connected, a required element of the *facilities study*. The power producer must therefore provide a detailed model of the transient response of the following main components of the wind *generating station*: generation equipment and related power equipment such as converters equipped with controls (e.g., SVC and STATCOM).

For wind *generating stations*, the detailed model must meet the following requirements:

- The model must be compatible with EMTP-RV software with a calculation step of 10 μ s.
- Model components must be fully user-accessible, i.e. unlocked. An agreement may however be reached with the *Transmission Provider* in order to encrypt the model or use a DLL (compiled) model. However, if the model is not user-accessible, the power producer must commit to updating it for the entire period during which the equipment in question will remain in service on the *System*. In particular, updates may be required whenever the equipment undergoes a hardware or software change, or as the EMTP software evolves (e.g., if recompilation of the model is required). Furthermore, the *Transmission Provider* may require a model capable of running on the real-time simulator Hypersim. Neither the power producer nor its manufacturer are required to design and deliver such a model. However, since the *Transmission Provider* will base this model on data taken from the EMTP model, it may need to gain access to locked portions of the EMTP model. For instance, it is possible to use a DLL designed for EMTP to model the controls of a machine and run it as-is in the Hypersim environment provided the power equipment controlled by this DLL and modeled in EMTP be accessible to the *Transmission Provider* so as to allow their modeling in Hypersim.
- It must be accompanied by detailed technical documentation, including modeling assumptions, descriptions of components and control systems modeled, and results of model validation tests to ensure conformity between the model and the equipment. Limits to using the model must be clearly stated.
- It must be possible to modify in the model the various settings and parameters that the *Transmission Provider* can modify on the actual equipment (e.g., voltage regulator gain, control modes, etc). The documentation must explain the effect of such settings and indicate their limits.

- The wind *generating station* model must contain a detailed model of any rotating machinery, including a multimass model of the rotor and blades. Wind turbines must be represented by an equivalent that takes into account the variability of its power output, including the effect of any variable pitch.
- The model must be functional across the equipment's entire range of real and reactive power, and must be designed to simulate all wind generators of the same type using a single model of higher capacity.
- If the equipment modeled relies on power electronics, the model must provide a detailed representation of converters, including controllers and the physical limitations of components.
- If the wind *generating station* or its equipment contain capacitor banks or filters, both these components and their control logic must be represented. The control logic must also be documented.
- The model must adequately simulate harmonics (including subharmonics and interharmonics) produced by the wind *generating station* over its equipment's entire range of real and reactive power.
- The model must provide an accurate representation of the behavior of the generation equipment and related power equipment during and after a *disturbance* (current, voltage and dynamic response), including the effect of control and protection systems on the response of the equipment or wind farm. Blocking of power electronic components or operation of crowbar protection must be represented in addition to the effect of all voltage regulators with a time constant of less than 2 s, including the voltage and power factor regulation systems at the connection point.
- The EMTP model must be completed and submitted to the *Transmission Provider* no later than six months after the winning project(s) are announced under a call for tenders by Hydro-Québec Distribution. For projects carried out without tendering, the model must be submitted to the *Transmission Provider* at the signing of the *interconnection study* agreement pursuant to the *Hydro-Québec Open Access Transmission Tariff*.

Appendix C

Information to be included in power producer *facility* protection study

The power producer must submit to the *Transmission Provider* a study on protection systems for its *facilities*. The study, signed by an engineer, must include the information listed in this Appendix.

Section 1 – Introduction

- Brief description of site, project and Hydro-Québec *Transmission System*
- Distinctive project features (e.g., added protections, specific instructions)
- Possible future expansion projects (adding capacity)

Section 2 – Characteristics of power producer *facilities*

- Single-line diagram of power producer *facilities*
- Electrical characteristics of generating equipment and protection systems:
 - *Synchronous or asynchronous generators*
 - Converters (if applicable)
 - Transformers
 - Circuit breakers
 - Grounding transformer or neutral reactor impedance
 - Protective relays
 - Instrument transformers for protection systems
 - Excitation system

Section 3 – Fault study

- Fault calculations (three-phase, two-phase, two-phase-to-ground, and phase-to-ground faults, with and without a fault impedance; for high-impedance faults, the fault resistance used must be $R_f = 10 \Omega$ and $Z_0 = 3 R_f = 30 \Omega$):
 - on the high-voltage busbar of the *generating station*
 - on the low-voltage busbar of the *generating station*
 - on the busbar(s) of associated Hydro-Québec substation(s)
 - on the *System* side of tie breaker (if it is far from the *generating station*)

Fault calculations must factor in:

- *Transmission System* contribution and minimum and maximum *generating station* contributions
- Contribution of the *generating station* alone

Section 4 – Relay settings and coordination curves

- Table showing proposed protective relay settings for protecting the *Transmission System* and their operation time for faults studied
- Protection coordination times or curves
- Control (or logic) and protection schematics

Appendix D

General Reference Electrical Characteristics (“CEGR”) Static excitation systems for salient-pole and round-rotor generators

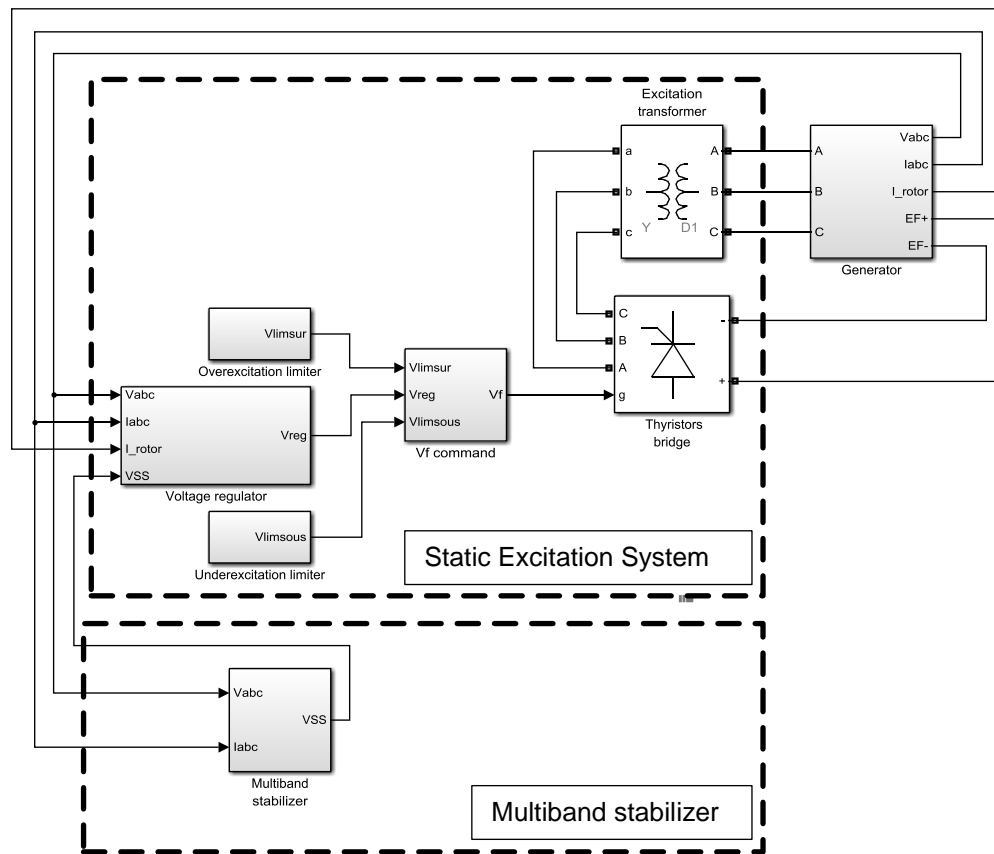
1.0 Description

This document defines performance requirements applicable to static excitation systems for salient pole generators and round rotor generators. The excitation system must be equipped with delta-omega multiband stabilizer and be complied with the CEGR "Stabilizer type delta-omega multiband" described in Appendix E.

2.0 General Excitation System Characteristics

The excitation system type must be static. Figure 1 shows a simplified diagram of the excitation system.

Figure 1 - Simplified scheme of static excitation system



Power must be supplied to three-phase thyristor converter bridges through an excitation transformer connected to the generator terminals. The excitation system must include all the devices required to feed the generator field and must be able to adequately control the generator terminal voltage under all operating conditions.

Ceiling voltage

The ceiling voltages of the excitation system must be plus and minus 10 p.u.

The excitation voltage per-unit value is defined as the product of the field current, measured on the air gap line at the nominal generator terminal voltage, by the field winding resistance at 100°C.

Ceiling current

The ceiling current of the excitation system must be greater than or equal to 1.6 times the nominal current. The excitation system must be capable of delivering the ceiling current for at least 30 seconds for salient pole generators or 15 seconds for round rotor generators. A negative excitation current is not required, but the excitation system must be capable of supplying the de-energization ceiling up to the zero excitation current limit.

Transmission system voltage and frequency constraints

In addition to normal *generating unit* operating conditions and temporary shut-down or start-up conditions, the excitation system must remain in operation under all voltage and frequency conditions (measured at the connection point of the *generating station*) that may occur during *Transmission System disturbances*. The ranges and minimum times to respect are presented in tables 2, 3 and 4 of the main document¹⁶.

In these last conditions, the excitation system must be capable of operating at full capacity without tripping itself or causing the generator to trip. Over- and underexcitation limiter circuits must therefore be provided; they must take control of the excitation system if needed and force the field current to remain within the limits imposed by an excitation system overload (overexcitation limiter) or within those imposed by a loss of synchronism or generator protections (underexcitation limiter).

3.0 Voltage Regulator

The open-loop dynamic behavior of the excitation system must yield an equivalent time constant of 0.02 second. The gain must be continuously adjustable from 10 to 400 p.u. The voltage regulator must essentially be a proportional controller so as to avoid any modification of the stabilizer transfer function over the entire frequency range covered by the various stabilizer circuits. The terminal voltage sensor must be equipped with a filter with an attenuation factor of at least 20 dB at 60 Hz.

The regulator must be equipped with a stabilization signal introduced at the level of the voltage set point and filtered voltage measurement summer (output of voltage measurement sensor and its filter).

¹⁶ The term “main document” refers to the *Technical Requirements for the Connection of Generating Stations to the Hydro-Québec Transmission System*, as approved from time to time by the Régie de l'énergie.

A specific (analog or digital) input must be provided to allow the addition of a stabilization (analog or digital) signal generated by a hardware platform other than that included with the currently supplied excitation system. The voltage regulator must give priority to the sampling of this signal at a rate less than 10 ms.

The voltage regulator gain must be automatically modified in case of power outage or stabilizer malfunction, mechanical generator fault or stabilizer disabling while the generator is operated in the voltage regulation mode. The new gain must be adjustable from 10 to 100 p.u.

4.0 Limiter Circuits

The excitation system must include overexcitation and underexcitation limiter circuits.

4.1 Overexcitation limiter

During temporary undervoltages, the excitation system must remain in operation in order to gradually return the generator terminal voltage to a value close to its nominal value. An overexcitation limiter circuit must take control of the excitation system and decrease the field current to a value close to its nominal value whenever the maximum heating capacity of the excitation system, as measured using the field current, is exceeded.

The dynamic behavior of the overexcitation limiter must ensure that transient variations are sufficiently dampened irrespective of voltage regulator settings.

4.2 Underexcitation limiter

During temporary overvoltages, the excitation system must remain in operation in order to gradually return the generator terminal voltage to a value close to its nominal value. When the field current becomes too low, an underexcitation limiter must take control of the excitation system and maintain the generator field current sufficient to avoid loss of synchronism or tripping by the field loss protection.

The dynamic behavior of the underexcitation limiter must ensure that transient variations are sufficiently dampened irrespective of voltage regulator settings.

5.0 Excitation System Testing

Excitation systems must be subjected to validation and performance tests (see section 10 of the main document) to verify all their characteristics and performance. Furthermore, the tests must allow the block-by-block identification of the transfer functions of all excitation system elements (e.g., amplifiers, time constants, sensor responses, limiters, non-linear elements, auxiliary control loops).

Appendix E

General Reference Electrical Characteristics (“CEGR”) Delta-omega multiband stabilizer

1.0 Description

The purpose of the stabilizer is to improve power swing damping for a generator using excitation system voltage modulation. The stabilization signal is carefully adjusted in both phase and amplitude to provide the desired power swing damping in order to ensure the stability of the Hydro-Québec *Transmission System* and therefore the reliability and continuity of the transmission service.

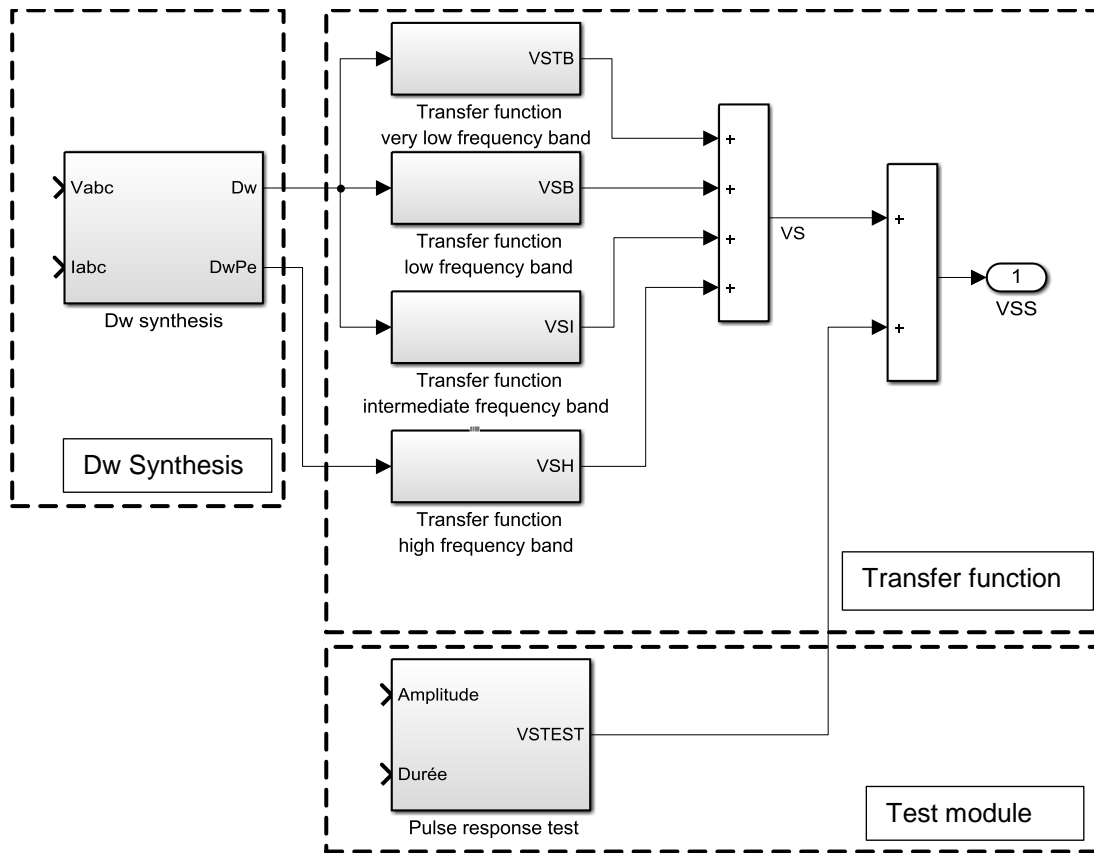
2.0 General Characteristics of the Stabilizer

The main functions of the stabilizer are :

- rotor speed synthesis using generator voltage and current signals (Dw synthesis of figure 1);
- stabilizer transfer function implementation using a quadruple frequency band structure;
- test module to verify the functioning of the stabilizer and the excitation system.

The delta-omega multiband stabilizer must be implemented on a digital platform which the simplified scheme is presented in figure 1 following.

Figure 1 – Simplified scheme of the multiband stabilizer



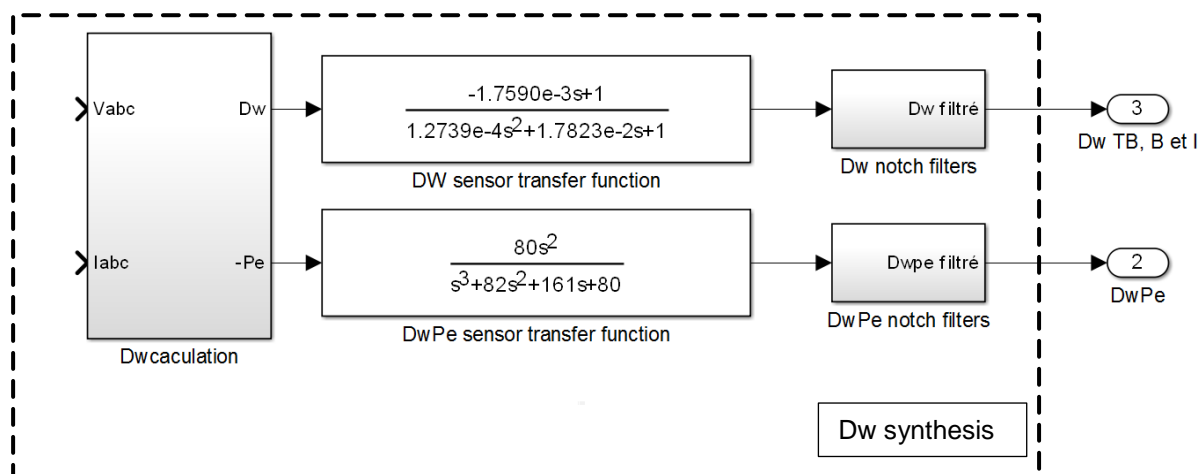
3.0 Rotor Speed Synthesis

Rotor speed is calculated using voltage and current measurements at the generator terminals by using two digital sensors, as shown in figure 2:

- The first sensor supplies the input signal of the very low, the low and the intermediate frequency bands (Dw TB, B et I);
- The second sensor supplies the input signal of the high frequency band (DwPe).

The dynamic behavior of the sensors must be equivalent to the behavior of the linear models shown in Figure 2.

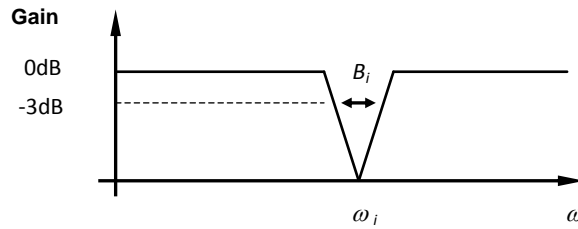
Figure 2 – Rotor Speed synthesis



Two notch-type digital filters (Dw and DwPe) arranged in a cascade must be available as needed for turbine-generator applications in order to adequately compensate the effect of torsional modes on speed measurements. For these applications, the notch filters $N_i(s)$ must be adjustable according to the resonance frequency w_i and the characteristic -3 dB bandwidth B_i as defined in the equation of the figure 3:

Figure 3 – Notch Filter Characteristics

$$N_i(s) = \frac{s^2 + \omega_i^2}{s^2 + B_i s + \omega_i^2}$$

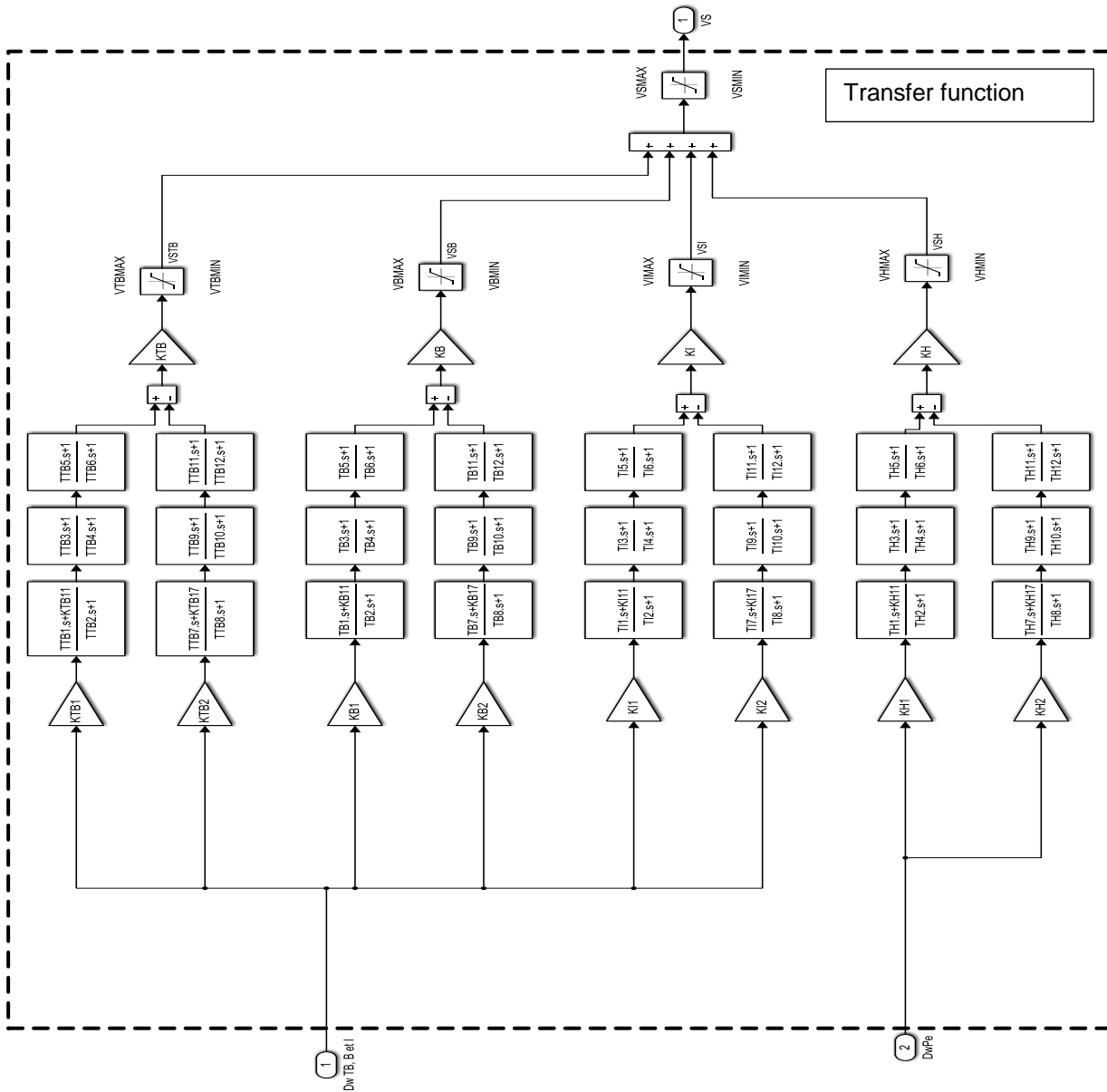


4.0 Stabilizer Transfer Function

4.1 Description

Figure 4 shows the transfer function of the multiband stabilizer.

Figure 4 – Transfer function of the multiband stabilizer



This function must be designed to operate separately over four frequency bands. Each band must have a global gain and a limiter. The transfer function must also include a limiter at the stabilizer output. Each band must comprise two segments configured as a differential filter, each including a gain, a lead-lag or high-pass blocks, as well as two series lead-lag blocks.

The transfer function must comprise two inputs, corresponding to the outputs of the speed sensors defined in section 3.

- The speed sensor (Dw TB, B and I) matches the entry very low, low and intermediate frequency bands;
- The speed sensor (DwPe) matches the entry high frequency band;
- The stabilization signal (VS) is the output of the transfer function. This signal is added to the signal of the test module (VSTEST) to give the output signal of the stabilizer (VSS), as shown in figure 1. This last signal is connected to the voltage regulator of the excitation system of the generator, as shown in figure 1 of the *CEGR Static excitation system for salient pole generators and round rotor generators* described in Appendix D.

4.2 Setting ranges of gains, time constants and limiters

The gains must be adjustable according to the table 1. The gains KTB11, KTB17, KB11, KB17, KI11, KI17, KH11 and KH17 are used in the first block of each transfer function segment to allow the modeling of either a high-pass filter (when set to a value near zero) or a lead-lag filter (when set to a value equal to 1). A zero value for any one of these parameters cancels the output of the corresponding block.

Table 1 - Setting of gains

Gains	Setting ranges (pu/pu)
KTB1, KTB2, KTB, KB1, KB2, KB, KI1, KI2, KI, KH1, KH2 et KH	0 to 300
KTB11, KTB17, KB11, KB17, KI11, KI17, KH11 et KH17	0 to 1

The time constants must be adjustable according to the table 2.

Table 2 - Setting of time constants

Time constants	Setting ranges (s)
TTB1, TTB2, TTB3, TTB4, TTB5, TTB6, TTB7, TTB8, TTB9, TTB10, TTB11 et TTB12	0 to 60
TB1, TB2, TB3, TB4, TB5, TB6, TB7, TB8, TB9, TB10, TB11 et TB12	0 to 30
TI1, TI2, TI3, TI4, TI5, TI6, TI7, TI8, TI9, TI10, TI11 et TI12	0 to 3
TH1, TH2, TH3, TH4, TH5, TH6, TH7, TH8, TH9, TH10, TH11 et TH12	0 to 1

The output of each frequency bands and the total output of all four frequency bands shall be also limited using limiters which must be adjustable independently according to table 3.

Table 3 - Setting of limiters

Limiters	Setting ranges (pu)
V_{TBMAX} , V_{BMAX} , V_{IMAX} , V_{HMAX} , et V_{SMAX}	0 to 1
V_{TBMIN} , V_{BMIN} , V_{IMIN} , V_{HMIN} et V_{SMIN}	-1 to 0

The output level of the signal of stabilisation (VS) must be adapted to the various existing excitation systems on which the multiband stabilizer can be connected. This adjustment of the output level must be carried out by a global gain applied to the output of the stabilizer.

5.0 Control Logic

Some logical functions must command the operation of the stabilizer with the excitation system. Figure 5 schematizes the following elements of the control logic of the stabilizer :

Logical inputs

- Local external ON/OFF control with dry contact or human-machine interface (1) ;
- Remote external ON/OFF control with pulse control (2 and 3 respectively) ;
- Mechanical fault with dry contact (4).

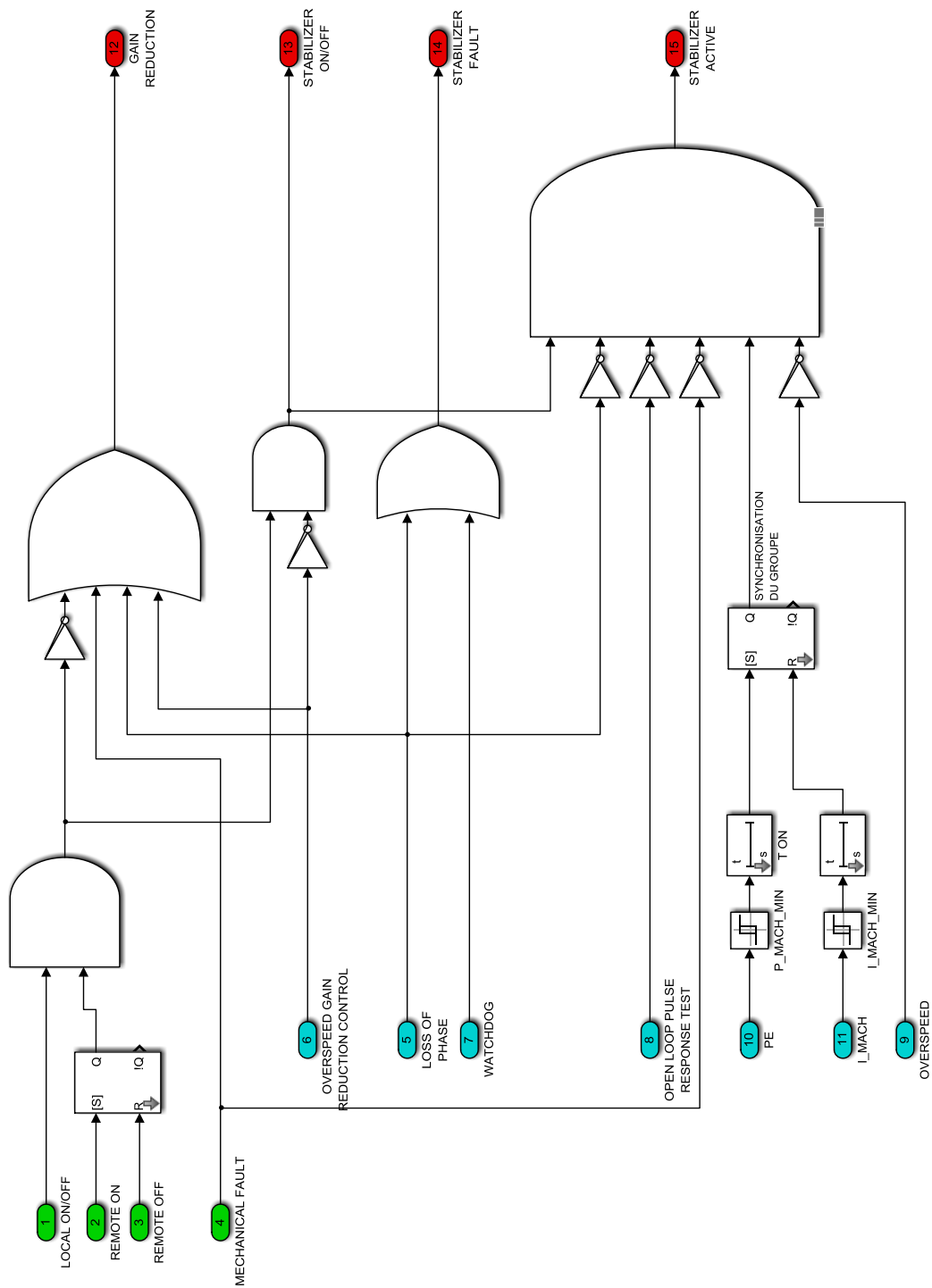
Logical outputs

- Gain reduction control of voltage regulator with dry contact (12) ;
- Stabilizer ON/OFF control state transmitted to annunciator and sequential event recorder with dry contact for each one. A single dry contact is sufficient if the generating station is equipped with a *generating station* integrated computer control (SICC) (13) ;
- Signaling of stabilizer faults transmitted to annunciator and sequential event recorder with one dry contact for each one. A single dry contact is sufficient if the *generating station* is equipped with a SICC (14).

Internal signals

- Synthesized speed in p.u., as calculated by the speed synthesis algorithm. The synthesized speed is used in the calculation of the overspeed function (9) ;
- Active power (PE) in p.u., as calculated by the speed synthesis algorithm (10);
- Positive sequence current (I_{mach}) in p.u., as calculated by the speed synthesis algorithm (11) ;
- Stabilizer fault generated by stabilizer supervision algorithms (logical state WatchDog_error and Loss of phase) (7 and 5 respectively) ;
- Open-loop pulse response test (8).

Figure 5 – Multiband Stabilizer Control Logic



5.1 Local and remote stabilizer control

It must be possible to enable or disable the stabilization signal locally or remotely. Disabling the stabilization signal must also trigger, by means of a dry contact, the reduction of the gain of the generator excitation system voltage regulator to a preset value.

When the stabilizer is disabled locally, remote enabling or disabling is no longer allowed. Nevertheless, the local disabling function must not prevent the remote control latch from operating. Thus, when the stabilizer is enabled locally, the last operating state stored by the remote control latch must be restored.

5.2 Overspeed

This function is required for hydraulic generating units. It disables the stabilizer as soon as the generating unit speed exceeds a threshold, V_{itmax} , adjustable between 105 and 120% of the nominal speed of the unit in question (logical state Overspeed according to reference 9 in figure 5).

This function is designed to limit dynamic overvoltages caused by *generating station* load shedding. This function will be able to discriminate between full generator load rejection conditions and partial generator load rejection with *islanding*. In case of full load rejection, the stabilizer is disabled without any voltage regulator gain reduction before reaching the overfrequency protection trip threshold of the generator. In case of partial load rejection, the stabilizer is disabled while the voltage regulator gain is reduced so as to keep the generator islanded with a sufficient margin of stability (logical state Overspeed gain reduction control according to reference 6 in figure 5).

5.3 Mechanical fault

The stabilization signal must be disabled when a generator mechanical fault is detected through a dry contact provided on the generator mechanical protection. Disabling the stabilization signal must also trigger, by means of a dry contact, a reduction of the gain of the generator excitation system voltage regulator to a preset value.

5.4 Generator synchronization

The stabilization signal must only be enabled after a delay sufficiently long to allow a balanced state to be reached during generator synchronization. A balanced state is reached if the main generator breaker has been closed in advance and a minimum amount of active power has been generated during an adjustable time interval. Active power is calculated in real-time by the stabilizer (using the speed synthesis algorithm). Once the stabilizer is

enabled (logical state Stabilizer active according to reference 15 in figure 5), it must stay enabled irrespective of the active power value until it is disabled.

The power logical detection variable depends on the following settings :

- The active power logical detection variable may take the values 1 or 0, depending on whether the minimum power threshold has been exceeded. This threshold (P_{mach_min} according to reference 10 in figure 5) is adjustable from 0.1 to 0.2 p.u. of the nominal power of the generator ;
- The time on delay (T ON according to reference 10 in figure 5) is adjustable from 1 to 10 seconds.

The reset condition of the generator synchronization function is initiated when the main *generator unit* breaker is tripped. The breaker state is detected through a low positive sequence current. The current is calculated in real-time by the stabilizer (using the speed synthesis algorithm). Breaker state detection depends on the following settings :

- The logical low current detection variable may take the values 0 or 1, depending on whether the low current threshold (I_{mach_min} according to reference 11 in figure 5) has been exceeded after a fixed time on delay set to 2 seconds. This threshold is adjustable from 0.05 to 0.10 p.u. of positive sequence current based on the nominal power of the generator.

5.5 Stabilizer fault

The stabilization signal must be disabled when a stabilizer fault is detected through stabilizer supervision algorithms. Disabling the stabilization signal must also trigger, by means of a dry contact, the reduction of the gain of the generator excitation system voltage regulator to a preset value. Supervision algorithms must at least detect stabilizer faults in the following conditions :

- Detection of an error by the dedicated stabilizer watchdog (Watchdog according to reference 7 in figure 5) ;
- Detection of an error during the loss of one, two or three current phases or voltage phases (Loss of phase according to reference 5 in figure 5).

5.6 Open-loop pulse response

During open-loop pulse response testing, the stabilizer must be disabled without reducing the voltage regulator gain.

5.7 Voltage regulator gain reduction

A single dry contact is needed to reduce the gain of the generator excitation system voltage regulator (logical state Gain reduction according to reference 12 in figure 5). The four conditions which require a reduction of the voltage regulator gain – i.e. the disabling of the stabilizer (see section 5.1), the detection of a stabilizer fault (see section 5.5), the detection of a generator mechanical fault (see section 5.3) and particular conditions of partial load rejection (see section 5.2) – must be grouped using a logical “OR” function, as shown in Figure 5.

6.0 Functional testing of stabilizer

The stabilizer must be subjected to validation and performance tests (see section 10 of the main document) to verify all the characteristic and performance of the stabilizer and the excitation system.

For this purpose, the stabilizer must include an internal function that allows pulse response testing of the stabilizer. This function allows to verify the functioning of the system which includes the stabilizer, the excitation system and the generator synchronized to the *Transmission System*, and this with the settings specified by the *Transmission Provider*.

Pulse response testing may be performed with the stabilizer operating in open-loop or closed-loop mode. Open-loop testing must trigger the disabling of the stabilizer without any reduction of the voltage regulator gain. The internal pulse signal (VSTEST) is injected with the stabilization signal (VS) to give the output signal of the stabilizer (VSS) (see figure 1).

Internal signals :

- The output of the pulse response function is the signal VSTEST in p.u ;
- Open-loop response testing must trigger the disabling of the stabilizer without any reduction of the voltage regulator gain.

Internal parameters :

- Pulse duration must be supplied as a pulse response test parameter. It must be adjustable from 0 to 1 second;
- Pulse amplitude must be supplied as a pulse response test parameter. It must be adjustable from 0 to +/- 0,10 p.u.

Appendix F

Requirements regarding verification and validation of power producer models and *facilities*

Purpose and scope

This appendix defines and specifies technical requirements for verifying power producer *facilities* pursuant to section 10.2 of the main document. It covers the validation and performance testing required to demonstrate that *generating stations* meet *Transmission Provider* requirements. It is divided in two sections, based on the type of generating equipment:

- 1.0 Conventional generation: hydroelectric or thermal generation by means of *synchronous* or *asynchronous generators* with no converter
- 2.0 Wind generation

Validation and performance testing is essential for the *Transmission Provider* to characterize the dynamic performance of generating equipment and to develop simulation models for dynamic simulation studies. The accuracy of models has a major impact on the estimation of capital spending for transmission, on the evaluation of transmission capacity, and ultimately on the development of operating strategies for the *System* and generating equipment. Accurate simulation models are also essential to determine what settings ensure optimal performances for both the equipment and the *System*.

This appendix specifies the scope of initial and periodic verifications.

- **Initial verifications:**

During *generating station* startup or following a substantial change of an existing *generating station*, the power producer must verify that its *facilities* meet *Transmission Provider* requirements and achieve the required levels of performance.

- **Periodic verifications:**

At intervals set by the *Transmission Provider*, the power producer must verify that its *facilities* have maintained their characteristics and their levels of performance.

1.0 Conventional generation

This first section covers conventional equipment, such as *synchronous* or *asynchronous generators* driven by hydraulic or thermal turbines. Such technology is considered mature, and is thoroughly covered in the literature and guides. The power producer must verify and validate items as required by the *Transmission Provider*, and produce a report in accordance with the standards and methods described below.

Testing requirements aimed at validating the characteristics and dynamic performance of excitation systems, stabilizers and speed governors are based on NERC reliability standards, i.e. MOD-026-1 *Verification of Models and Data for Generator Excitation Control System or Plant Volt/Var Control Functions*¹⁷ for excitation systems, and MOD-027-1 *Verification of Models and Data for Turbine/Governor and Load Control or Active Power/Frequency Control Functions*¹⁸ for speed governors. Similarly, to validate the maximum real and reactive power capability of generating equipment, the *Transmission Provider* relies on requirements set in MOD-024-1 *Verification of Generation Gross and Net Real Power Capability*¹⁹ and MOD-025-2 *Verification and Data Reporting of Generator Real and Reactive Power Capability and Synchronous Condenser Reactive Power Capability*²⁰, and on criteria set in NPCC directories #9 – *Verification of Generator Gross and Net Real Power Capability*²¹ and #10 – *Verification of Generator Gross and Net Reactive Power Capability*²².

This section covers initial and periodic verification of power producer *facilities*, and the various reports and documents to be delivered.

¹⁷ Reference provided only for explanatory and informative purposes.

¹⁸ See note 17.

¹⁹ See note 17.

²⁰ See note 17.

²¹ See note 17.

²² See note 17.

1.1 Validation of *synchronous and asynchronous generator models and parameters*

The generator models and parameters requested by the *Transmission Provider* in Appendix A to the main document are essential to properly simulate *Transmission System* behavior and ensure its transmission capacity.

Initial verifications:

- The power producer must validate, through testing, the parameters and models provided to the *Transmission Provider* for the purpose of conducting its studies.
- The method used to validate parameters is subject to the *Transmission Provider's* approval. For *synchronous generators*, validation may rely on IEEE Guide 115 – *Test Procedures for Synchronous Machines*²³. For *asynchronous generators*, the recommended reference is IEEE Standard 112 – *Test Procedure for Polyphase Induction Motors and Generators*²⁴, but other standards may be considered on a case-by-case basis.
- Parameter validation is a type test (i.e., it is performed on one *generating unit* of each model at the *generating station*), except for open-circuit characteristics (up to 1.2 p.u. of stator voltage) and short-circuit characteristics, which must be determined by testing each *generating station generating unit*.

Periodic verifications:

- No periodic verification is requested.

1.2 Validation of *voltage regulation models and parameters*

Voltage regulation system testing validates parameters and models used in dynamic simulation studies and settings tuning studies performed by the *Transmission Provider*. Tuning of settings has a major impact on both power *System* behavior and on the security of power producer and *Transmission Provider* equipment.

Initial verifications:

- Applicable to all voltage regulation systems

²³ Reference provided only for explanatory and informative purposes.

²⁴ See note 23.

- Power producer must demonstrate that *Transmission Provider* requirements described in section 6.4 of the main document are met.
- Power producer must update voltage regulator and excitation system models (p.u./p.u.) and block diagrams submitted to *Transmission Provider* to allow it to conduct its studies. Power producer must also apply settings given by *Transmission Provider*.
- Simulation models must faithfully represent the dynamic response of *generating units* during voltage and frequency variations in the ranges given in tables 2, 3 and 4 of sections 6.3.1 to 6.3.3 of the main document. Tests are required to characterize all regulation system functions: automatic voltage regulator, underexcitation limiter, overexcitation limiter, V/Hz limiter, reactive current compensation, stabilizer, bridge firing circuits, sensors, etc.
- Validation method is subject to the *Transmission Provider's* approval, IEEE Guide 421.2 *Guide for Identification, Testing, and Evaluation of the Dynamic Performance of Excitation Control Systems*²⁵ being a recognized reference on validation parameters for voltage regulation systems.
- At least the following tests must be performed: with *generating unit* not synchronized, voltage set point step response; with *generating unit* synchronized, voltage set point step responses to validate excitation system gain with and without stabilizer, step responses to verify positive and negative ceiling voltages of excitation system and immediate response of excitation system; step responses with and without stabilizer to validate overexcitation and underexcitation limiters; and short-duration (voltage pulse) step responses with stabilizer.
- Tests above are type test performed on one *generating unit* of each design found at the *generating station*, except for short-duration step responses with stabilizer, which must be determined by testing each *generating station generating unit*.
- The power producer must show that the model is adequate by demonstrating that a numerical simulation gives results closely matching test results.
- Measurement points: for each test, it is necessary to record at least the stator voltages and currents for all three phases, the field voltage and current, and the stabilizer output signal. Power producer must ensure that excitation system has analog or digital inputs needed to run required tests (e.g., measuring step responses). Excitation system must have analog inputs and outputs needed to determine and characterize transfer functions

²⁵ Reference provided only for explanatory and informative purposes.

of block diagrams. Power producer must ensure at design stage that measurement points will be readily accessible.

Periodic verifications:

Periodic verifications to be performed every six years: at least, short-duration step responses with stabilizer must be verified for all *generating station generating units* and results must be similar to those obtained during initial verification of *generating units*. If periodic test results are not similar, power producer must take necessary corrective action.

1.3 Validation of speed governor models and parameters

Speed governor testing validates parameters and models used in dynamic simulation studies and settings tuning studies performed by the *Transmission Provider*. Tuning of settings has a major impact on both *System* behavior and on the security of power producer and *Transmission Provider* equipment. *Generating unit* speed regulation dictates both the frequency behavior and the stability of the *System*. It also has a direct impact on power quality.

Initial verifications:

- Applicable to all speed governors
- Power producer must demonstrate that its *facilities* meet *Transmission Provider* requirements described in section 6.4 of the main document.
- Power producer must update speed governor models and block diagrams submitted to *Transmission Provider* to allow it to conduct its studies. Power producer must also apply settings given by *Transmission Provider*.
- Simulation models must faithfully represent the dynamic response of *generating units* during frequency variations in the ranges given in Table 4 of section 6.3.3 of the main document. Tests are needed to characterize all functions of speed governor system.
- The method used to validate speed governor performance is subject to the *Transmission Provider's* approval. For hydraulic *generating stations*, the recommended reference is international standard IEC 60308 *Hydraulic turbines – Testing of control systems*²⁶. For

²⁶ Reference provided only for explanatory and informative purposes.

gas and steam turbines, CIGRE Technical Brochure 238 *Modeling of Gas Turbines and Steam Turbines in Combined Cycle Power Plants*²⁷ is the recommended reference.

- Validation of parameters and models described below is performed through type tests on one *generating unit* of each design found at the *generating station*. Power producer must identify transfer functions for speed governor mechanical components and sensors on a block-by-block basis. Tests must be run for various operating points within operating range of *generating units*. Power producer must also perform tests to validate *generating unit* inertia constant H. After identifying blocks, frequency step responses must be measured to demonstrate that overall model is adequate. At least the following frequency step responses must be measured: with *generating unit* not synchronized, one frequency step response; with *generating unit* synchronized, positive frequency step responses at 10%, 50% and 90% of rated capacity, and one negative frequency step response at 90% of rated capacity.
- The positive frequency step response at 90% of rated capacity must be measured on all *generating station generating units*. Results will serve as a benchmark (signature) for periodic verification.
- Power producer must demonstrate model adequacy by demonstrating that a numerical simulation gives results closely matching test results.
- Measurement points: for each test, it is necessary to record at least frequency, real power, and outputs of main blocks of speed governor. Power producer must ensure that speed governor system has analog or digital inputs required to run required tests (e.g., measuring step responses). Speed governor must have analog inputs and outputs required to determine and characterize block diagram transfer functions. Power producer must ensure, at design stage, that measurement points will be readily accessible.

Periodic verifications:

Periodic verifications to be performed every six years: power producer must at least verify positive frequency step response at 90% of rated capacity for every *generating station generating unit*; results must be similar to those obtained during initial verification of *generating units*. If periodic test results are not similar, power producer must take necessary corrective action.

²⁷ Reference provided only for explanatory and informative purposes.

1.4 Harmonics

Initial verifications:

- If required by *Transmission Provider*, power producer must run validation tests in accordance with requirements described in section 7.8 of main document. Such tests must be run on each *generating unit* before it is synchronized. If results are unsatisfactory, *generating unit* cannot be synchronized to *System* unless expressly authorized by *Transmission Provider*.

Periodic verifications:

- No periodic verification is requested.

1.5 Maximum capacity: real and reactive power

The purpose of this validation testing is to determine the maximum real and reactive power of a *generating station* under various operating conditions. The first step is to measure maximum real and reactive power of *generating station* by group testing all *generating units* while remaining within *System* operating voltage limits and meeting any *System* thermal constraints. The second step is to evaluate a *generating station*'s maximum real and reactive power in order to confirm the rated power factor of each generator. This test measures the ability of generators to withstand *Transmission System* voltage during a contingency such as the *tripping* of one or several transmission lines. This evaluation is performed by testing each generator individually up to its maximum capacity without causing a *generating station* or *System* operating constraint.

Initial verifications:

- Initial verification consists in running both the group tests and the individual tests (i.e., those run on each *generating unit*) described in Québec balancing authority area procedure IQ-P-001 *Maximum Real and Reactive Power Verification at Generation Facilities of 50 MVA or Higher Capacity*²⁸.

Periodic verifications:

- Items to be verified periodically are described in procedure IQ-P-001.

²⁸ Reference provided only for explanatory and informative purposes.

- For *generating stations* of 50 MVA or higher capacity located in Québec, group testing must be performed once every three years, during the winter.
- Individual testing may be performed at any time, but no less than once every six years.

1.6 Transformer data

- When power producer supplies *generating unit* step-up transformers, it must submit to *Transmission Provider* results of factory type and routine tests performed on all such transformers. It must also submit to *Transmission Provider*, where appropriate, a description of any voltage regulation performed by on-load tap changers, including regulation modes and associated block diagrams.

1.7 Instrumentation

Instrumentation used by power producer to perform validation testing must have the following minimal features:

- Digital instruments to facilitate matching test results to numerical simulation results
- Accuracy: 16 bits
- Minimum of 16 channels
- Anti-aliasing filters adjustable to sampling rate or based on sigma-delta technique
- Sampling rate and recording time: adjustable depending on test requirements. For example, a voltage regulator step response test requires sampling at a rate of 10 kHz or higher for about 30 s, while a step response validation test on an overexcitation limiter may require recording for several minutes, but at a lower sampling rate (2 kHz).

1.8 Deliverables

While it is recognized that certain validation tests may be run in the factory, most testing will be conducted on site, some tests with the *generating unit* shut down, others with it running and either synchronized or not.

- Documents and test reports must be prepared and signed by an engineer.
- Six months prior to very first (factory or on-site) test, power producer must submit to *Transmission Provider* a comprehensive test program describing regulation systems and test methods that will be used to obtain parameters to be verified, test location (factory or on site) and preliminary schedule. Test program will be reviewed for approval by *Transmission Provider*.

- Three months before any testing begins, power producer must submit to *Transmission Provider* a detailed procedure covering the following points: list of parameters verified by testing, validation method, test conditions (“on-grid” or “off-grid” and initial conditions), all procedure steps, variables recorded, characteristics of measuring chain and test schedule.
- *Transmission Provider* reserves right to witness certain tests or verifications performed by power producer or its suppliers. Power producer must therefore promptly notify the *Transmission Provider* of any change in schedule.
- Test reports must contain a description of systems verified and models validated (for voltage regulation and speed governing), tables of parameters provided by power producer to *Transmission Provider* for *interconnection study* and parameters obtained during validation testing, and figures comparing test results with numerical simulation results (for voltage regulation and speed governing). Reports must be submitted to *Transmission Provider* for comments. *Transmission Provider* has one month to provide comments. Submittal of final version of test reports by power producer is one prerequisite for final acceptance of *facilities* by *Transmission Provider*.
- Power producer must also submit raw test data (recorder data) should *Transmission Provider* so require.

2.0 Wind generation

This second section covers wind generation.

The power producer is responsible for conducting the tests, the purpose of which is to verify compliance with requirements and validate simulation models. It is the *Transmission Provider*, however, who supplies and installs the instrumentation required for testing and analyzes test results unless the *Transmission Provider* and power producer agree otherwise.

Performing such tests is one of the prerequisites for final *Transmission Provider* acceptance of *generating station* connection.

2.1 Initial verifications

Initial verification is done both by testing and by using a monitoring system.

Tests must be run by the power producer but the description of the tests is provided by the *Transmission Provider*. Certain verifications are also made throughout the period of operation of the *generating station* using a monitoring system installed by the *Transmission Provider*.

Test methods and conditions specific to wind *generating stations* are described in the document *General Validation Test Program for Wind Power Plants Connected to the Hydro-Québec Transmission System*²⁹.

Tests are intended to verify:

- Primary voltage regulation
- Undervoltage response and LVRT
- Frequency control
- Secondary voltage regulation
- Power factor
- Maximum ramp rates

There are no specific tests for power quality in the general test program. Power quality is only validated during *generating station* operation.

2.2 Periodic verifications

The *Transmission Provider* will make specific requests for periodic testing (every six years). The power producer must allow such testing by providing appropriate test conditions and by assisting the *Transmission Provider*, free of charge, in conducting the tests.

²⁹ Reference provided only for explanatory and informative purposes.