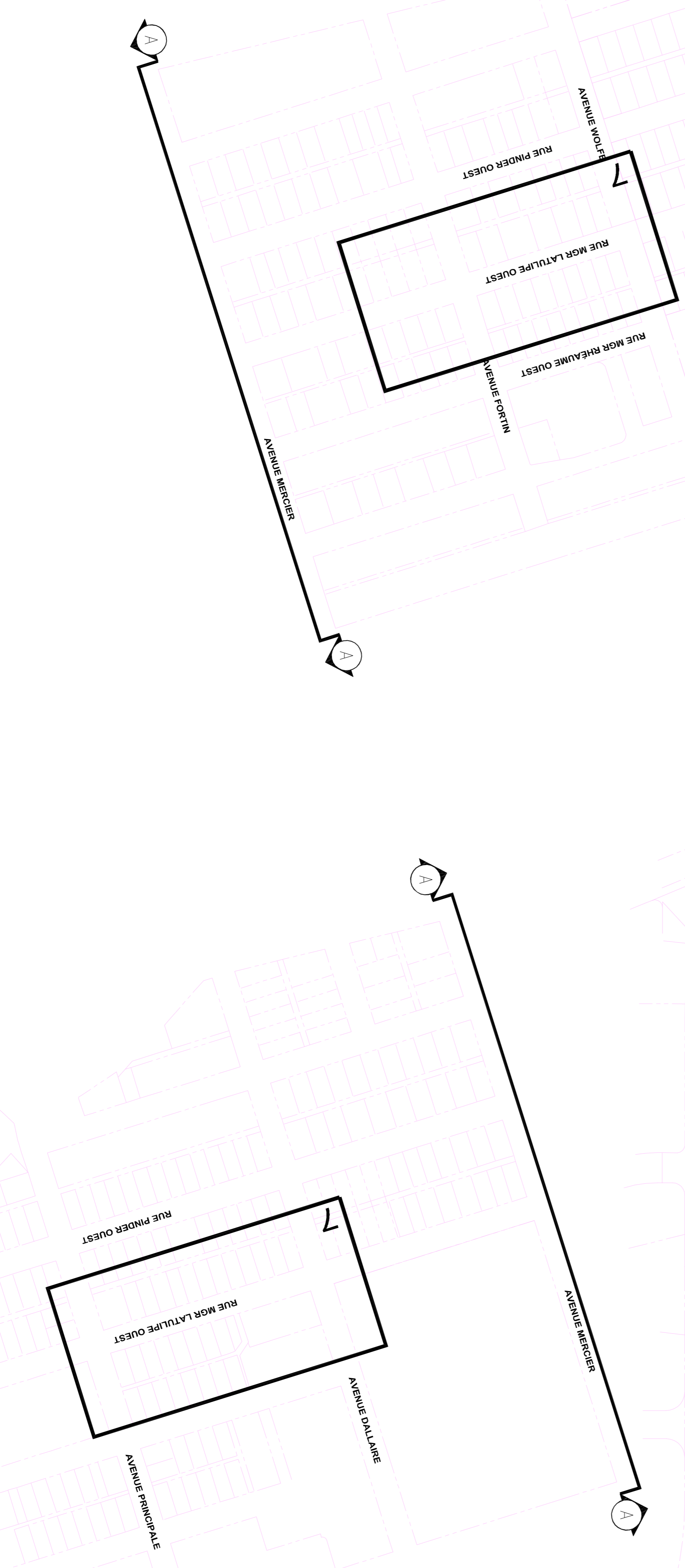
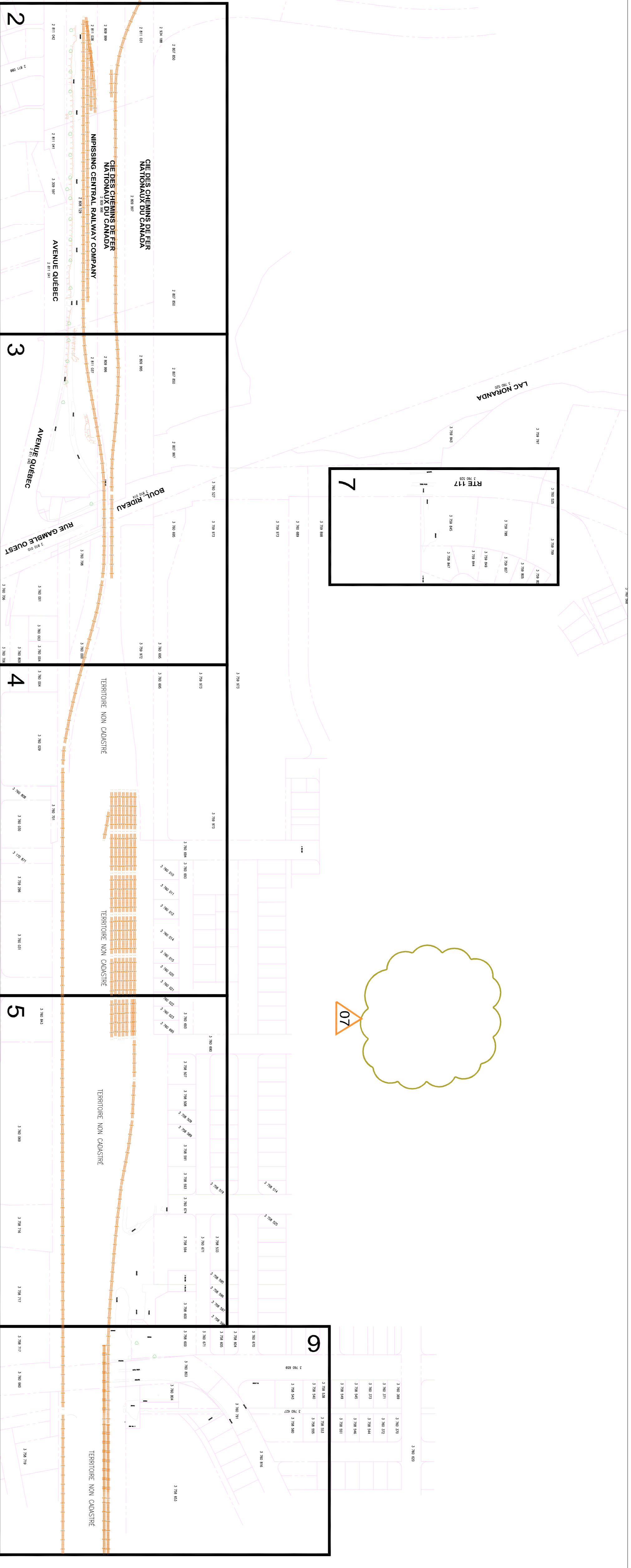
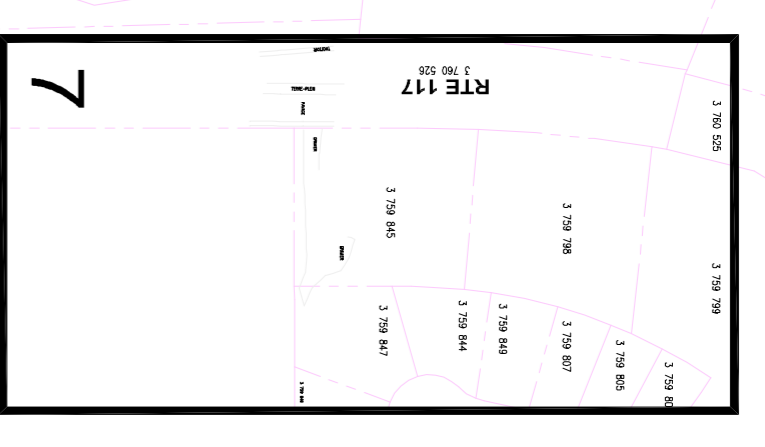


**TRACÉ DE LA LIGNE TEMPORAIRE
SUR L'AVENUE QUÉBEC À ROUYN-NORANDA**



07

MANOEUVRE

LC/LC	ÉTAT ACTUEL	ÉTAT FINAL	PLAN / REP.	ENDROIT
TTMBW	FERRME	OUVERT	N/A	Rue Hélie
TTMBS	OUVERT	FERRME	N/A	Pavé Lori
UHRK	FERRME	OUVERT	N/A	Boul de Québec / Rue Doyon
TTGSM	OUVERT	FERRME	N/A	Av. Chausse / Rue Lapointe
ZSCPT	FERRME	OUVERT	N/A	Av. Gaudou / Rue Chénobois
UYXZ	OUVERT	FERRME	N/A	Rue Montaigne - d'Alajuste Est
UYVZ	FERRME	OUVERT	3 DE 7, P75	Boul. Roberge
UYGVZ	FERRME	OUVERT	N/A	Boul. du Tremblay
UYGW	OUVERT	FERRME	N/A	20e rue / Av. Fontaine
UOAS	FERRME	OUVERT	N/A	Rue Morot / Av. de l'Église
UASD	OUVERT	FERRME	N/A	Rue des Puits / Av. de l'Église
ZMSU	N/A	OUVERT	5 DE 7, P44	Avenue Thompson

MANOEUVRE

LC/LC	APPAREIL	ÉTAT	PLAN / REP.	ENDROIT
UACIC	SECT.	ENLEVER	3 DE 7, P85	Boul. Roberge
CADDN	SECT.	ENLEVER	2 DE 7, P01, 4	Avenue Québec
UHDN	INT.	ENLEVER	4 DE 7, P29	13 ^e Rue
UHRGW	SECT.	ENLEVER	4 DE 7, P31	42, 13 ^e Rue
TTWGC	INT.	ENLEVER	6 DE 7, P93	111, rue Saguenay
URRX	SECT.	ENLEVER	5 DE 7, P40	116, Rue 12 ^e Avenue
TIGIG	DISJONCTEUR	ENLEVER	7 de 7, P87	Face 272 Latulipe Ouest

LEGENDE

EXISTANT	ADAPTER	ENLEVER	REMANIER	DESCRIPTION
---	---	---	---	LOSE M1, MONOPHASE
---	---	---	---	LOSE M1, BIPHASE
---	---	---	---	LOSE M1, TRIPHASE
---	---	---	---	LOSE B1, NEUTRE
---	---	---	---	LOSE B1, DOUBLE
---	---	---	---	LOSE B1, TRIPLE
---	---	---	---	LOSE B1, QUADRUPLE
---	---	---	---	FM DE COURSE
---	---	---	---	BRETELLE

EXISTANT	ADAPTER	ENLEVER	REMANIER	DESCRIPTION
---	---	---	---	TRMS, MONO, 120/240 V
---	---	---	---	TRMS, TRIP, 127/200 X 240 V
---	---	---	---	CONDUCTEUR, 35kV
---	---	---	---	SCANDIUM
---	---	---	---	ISOVITISA
---	---	---	---	REDUCTEUR
---	---	---	---	DISJONCTEUR REINTEGRABLE
---	---	---	---	ENLEVER, TRIP, MONOPHASE
---	---	---	---	REMANIER, TRIP, BIPHASE
---	---	---	---	REMANIER, TRIP, TRIPHASE

EXISTANT	ADAPTER	ENLEVER	REMANIER	DESCRIPTION
---	---	---	---	HYDRO-QUEBEC SEUL
---	---	---	---	HYDRO-QUEBEC COMUNIT
---	---	---	---	TELEPHONE SEUL
---	---	---	---	TELEPHONE COMUNIT

EXISTANT	ADAPTER	ENLEVER	REMANIER	DESCRIPTION
---	---	---	---	REMANIER, TRIP, MONOPHASE
---	---	---	---	REMANIER, TRIP, BIPHASE
---	---	---	---	REMANIER, TRIP, TRIPHASE

EXISTANT	ADAPTER	ENLEVER	REMANIER	DESCRIPTION
---	---	---	---	REMANIER, TRIP, MONOPHASE
---	---	---	---	REMANIER, TRIP, BIPHASE
---	---	---	---	REMANIER, TRIP, TRIPHASE

EXISTANT	ADAPTER	ENLEVER	REMANIER	DESCRIPTION
---	---	---	---	REMANIER, TRIP, MONOPHASE
---	---	---	---	REMANIER, TRIP, BIPHASE
---	---	---	---	REMANIER, TRIP, TRIPHASE

EXISTANT	ADAPTER	ENLEVER	REMANIER	DESCRIPTION
---	---	---	---	REMANIER, TRIP, MONOPHASE
---	---	---	---	REMANIER, TRIP, BIPHASE
---	---	---	---	REMANIER, TRIP, TRIPHASE

EXISTANT	ADAPTER	ENLEVER	REMANIER	DESCRIPTION
---	---	---	---	REMANIER, TRIP, MONOPHASE
---	---	---	---	REMANIER, TRIP, BIPHASE
---	---	---	---	REMANIER, TRIP, TRIPHASE

EXISTANT	ADAPTER	ENLEVER	REMANIER	DESCRIPTION
---	---	---	---	REMANIER, TRIP, MONOPHASE
---	---	---	---	REMANIER, TRIP, BIPHASE
---	---	---	---	REMANIER, TRIP, TRIPHASE

EXISTANT	ADAPTER	ENLEVER	REMANIER	DESCRIPTION
---	---	---	---	REMANIER, TRIP, MONOPHASE
---	---	---	---	REMANIER, TRIP, BIPHASE
---	---	---	---	REMANIER, TRIP, TRIPHASE

EXISTANT	ADAPTER	ENLEVER	REMANIER	DESCRIPTION
---	---	---	---	REMANIER, TRIP, MONOPHASE
---	---	---	---	REMANIER, TRIP, BIPHASE
---	---	---	---	REMANIER, TRIP, TRIPHASE

EXISTANT	ADAPTER	ENLEVER	REMANIER	DESCRIPTION
---	---	---	---	REMANIER, TRIP, MONOPHASE
---	---	---	---	REMANIER, TRIP, BIPHASE
---	---	---	---	REMANIER, TRIP, TRIPHASE

EXISTANT	ADAPTER	ENLEVER	REMANIER	DESCRIPTION
---	---	---	---	REMANIER, TRIP, MONOPHASE
---	---	---	---	REMANIER, TRIP, BIPHASE
---	---	---	---	REMANIER, TRIP, TRIPHASE

EXISTANT	ADAPTER	ENLEVER	REMANIER	DESCRIPTION
---	---	---	---	REMANIER, TRIP, MONOPHASE
---	---	---	---	REMANIER, TRIP, BIPHASE
---	---	---	---	REMANIER, TRIP, TRIPHASE

EXISTANT	ADAPTER	ENLEVER	REMANIER	DESCRIPTION
---	---	---	---	REMANIER, TRIP, MONOPHASE
---	---	---	---	REMANIER, TRIP, BIPHASE
---	---	---	---	REMANIER, TRIP, TRIPHASE

EXISTANT	ADAPTER	ENLEVER	REMANIER	DESCRIPTION
---	---	---	---	REMANIER, TRIP, MONOPHASE
---	---	---	---	REMANIER, TRIP, BIPHASE
---	---	---	---	REMANIER, TRIP, TRIPHASE

EXISTANT	ADAPTER	ENLEVER	REMANIER	DESCRIPTION
---	---	---	---	REMANIER, TRIP, MONOPHASE
---	---	---	---	REMANIER, TRIP, BIPHASE
---	---	---	---	REMANIER, TRIP, TRIPHASE

EXISTANT	ADAPTER	ENLEVER	REMANIER	DESCRIPTION
---	---	---	---	REMANIER, TRIP, MONOPHASE
---	---	---	---	REMANIER, TRIP, BIPHASE
---	---	---	---	REMANIER, TRIP, TRIPHASE

EXISTANT	ADAPTER	ENLEVER	REMANIER	DESCRIPTION
---	---	---	---	REMANIER, TRIP, MONOPHASE
---	---	---	---	REMANIER, TRIP, BIPHASE
---	---	---	---	REMANIER, TRIP, TRIPHASE

EXISTANT	ADAPTER	ENLEVER	REMANIER	DESCRIPTION
---	---	---	---	REMANIER, TRIP, MONOPHASE
---	---	---	---	REMANIER, TRIP, BIPHASE
---	---	---	---	REMANIER, TRIP, TRIPHASE

EXISTANT	ADAPTER	ENLEVER	REMANIER	DESCRIPTION
---	---	---	---	REMANIER, TRIP, MONOPHASE
---	---	---	---	REMANIER, TRIP, BIPHASE
---	---	---	---	REMANIER, TRIP, TRIPHASE

EXISTANT	ADAPTER	ENLEVER	REMANIER	DESCRIPTION
---	---	---	---	REMANIER, TRIP, MONOPHASE
---	---	---	---	REMANIER, TRIP, BIPHASE
---	---	---	---	REMANIER, TRIP, TRIPHASE

EXISTANT	ADAPTER	ENLEVER	REMANIER	DESCRIPTION
---	---	---	---	REMANIER, TRIP, MONOPHASE
---	---	---	---	REMANIER, TRIP, BIPHASE
---	---	---	---	REMANIER, TRIP, TRIPHASE

EXISTANT	ADAPTER	ENLEVER	REMANIER	DESCRIPTION
---	---	---	---	REMANIER, TRIP, MONOPHASE
---	---	---	---	REMANIER, TRIP, BIPHASE
---	---	---	---	REMANIER, TRIP, TRIPHASE

EXISTANT	ADAPTER	ENLEVER	REMANIER	DESCRIPTION
---	---	---	---	REMANIER, TRIP, MONOPHASE
---	---	---	---	REMANIER, TRIP, BIPHASE
---	---	---	---	REMANIER, TRIP, TRIPHASE

EXISTANT	ADAPTER	ENLEVER	REMANIER	DESCRIPTION
---	---	---	---	REMANIER, TRIP, MONOPHASE
---	---	---	---	REMANIER, TRIP, BIPHASE
---	---	---	---	REMANIER, TRIP, TRIPHASE

EXISTANT	ADAPTER	ENLEVER	REMANIER	DESCRIPTION
---	---	---	---	REMANIER, TRIP, MONOPHASE
---	---	---	---	REMANIER, TRIP, BIPHASE
---	---	---	---	REMANIER, TRIP, TRIPHASE

EXISTANT	ADAPTER	ENLEVER	REMANIER	DESCRIPTION
---	---	---	---	REMANIER, TRIP, MONOPHASE
---	---	---	---	REMANIER, TRIP, BIPHASE
---	---	---	---	REMANIER, TRIP, TRIPHASE

EXISTANT	ADAPTER	ENLEVER	REMANIER	DESCRIPTION
---	---	---	---	REMANIER, TRIP, MONOPHASE
---	---	---	---	REMANIER, TRIP, BIPHASE
---	---	---	---	REMANIER, TRIP, TRIPHASE

EXISTANT	ADAPTER	ENLEVER	REMANIER	DESCRIPTION
---	---	---	---	REMANIER, TRIP, MONOPHASE
---	---	---	---	REMANIER, TRIP, BIPHASE
---	---	---	---	REMANIER, TRIP, TRIPHASE

EXISTANT	ADAPTER	ENLEVER	REMANIER	DESCRIPTION
---	---	---	---	REMANIER, TRIP, MONOPHASE
---	---	---	---	REMANIER, TRIP, BIPHASE
---	---	---	---	REMANIER, TRIP, TRIPHASE

EXISTANT	ADAPTER	ENLEVER	REMANIER	DESCRIPTION
---	---	---	---	REMANIER, TRIP, MONOPHASE
---	---	---	---	REMANIER, TRIP, BIPHASE
---	---	---	---	REMANIER, TRIP, TRIPHASE

EXISTANT	ADAPTER	ENLEVER	REMANIER	DESCRIPTION
---	---	---	---	REMANIER, TRIP, MONOPHASE
---	---	---	---	REMANIER, TRIP, BIPHASE
---	---	---	---	REMANIER, TRIP, TRIPHASE

EXISTANT	ADAPTER	ENLEVER	REMANIER	DESCRIPTION
---	---	---	---	REMANIER, TRIP, MONOPHASE
---	---	---	---	REMANIER, TRIP, BIPHASE
---	---	---	---	REMANIER, TRIP, TRIPHASE

EXISTANT	ADAPTER	ENLEVER	REMANIER	DESCRIPTION
---	---	---	---	REMANIER, TRIP, MONOPHASE
---	---	---	---	REMANIER, TRIP, BIPHASE
---	---	---	---	REMANIER, TRIP, TRIPHASE

EXISTANT	ADAPTER	ENLEVER	REMANIER	DESCRIPTION
---	---	---	---	REMANIER, TRIP, MONOPHASE
---	---	---	---	REMANIER, TRIP, BIPHASE
---	---	---	---	REMANIER, TRIP, TRIPHASE

EXISTANT	ADAPTER	ENLEVER	REMANIER	DESCRIPTION
---	---	---	---	REMANIER, TRIP, MONOPHASE
---	---	---	---	REMANIER, TRIP, BIPHASE
---	---	---	---	REMANIER, TRIP, TRIPHASE

EXISTANT	ADAPTER	ENLEVER	REMANIER	DESCRIPTION
---	---	---	---	REMANIER, TRIP, MONOPHASE
---	---	---	---	REMANIER, TRIP, BIPHASE
---	---	---	---	REMANIER, TRIP, TRIPHASE

EXISTANT	ADAPTER	ENLEVER	REMANIER	DESCRIPTION
---	---	---	---	REMANIER, TRIP, MONOPHASE
---	---	---	---	REMANIER, TRIP, BIPHASE
---	---	---	---	REMANIER, TRIP, TRIPHASE

EXISTANT	ADAPTER	ENLEVER	REMANIER	DESCRIPTION
---	---	---	---	REMANIER, TRIP, MONOPHASE
---	---	---	---	REMANIER, TR

