



Séance de travail Phase 1 : tarifs domestiques

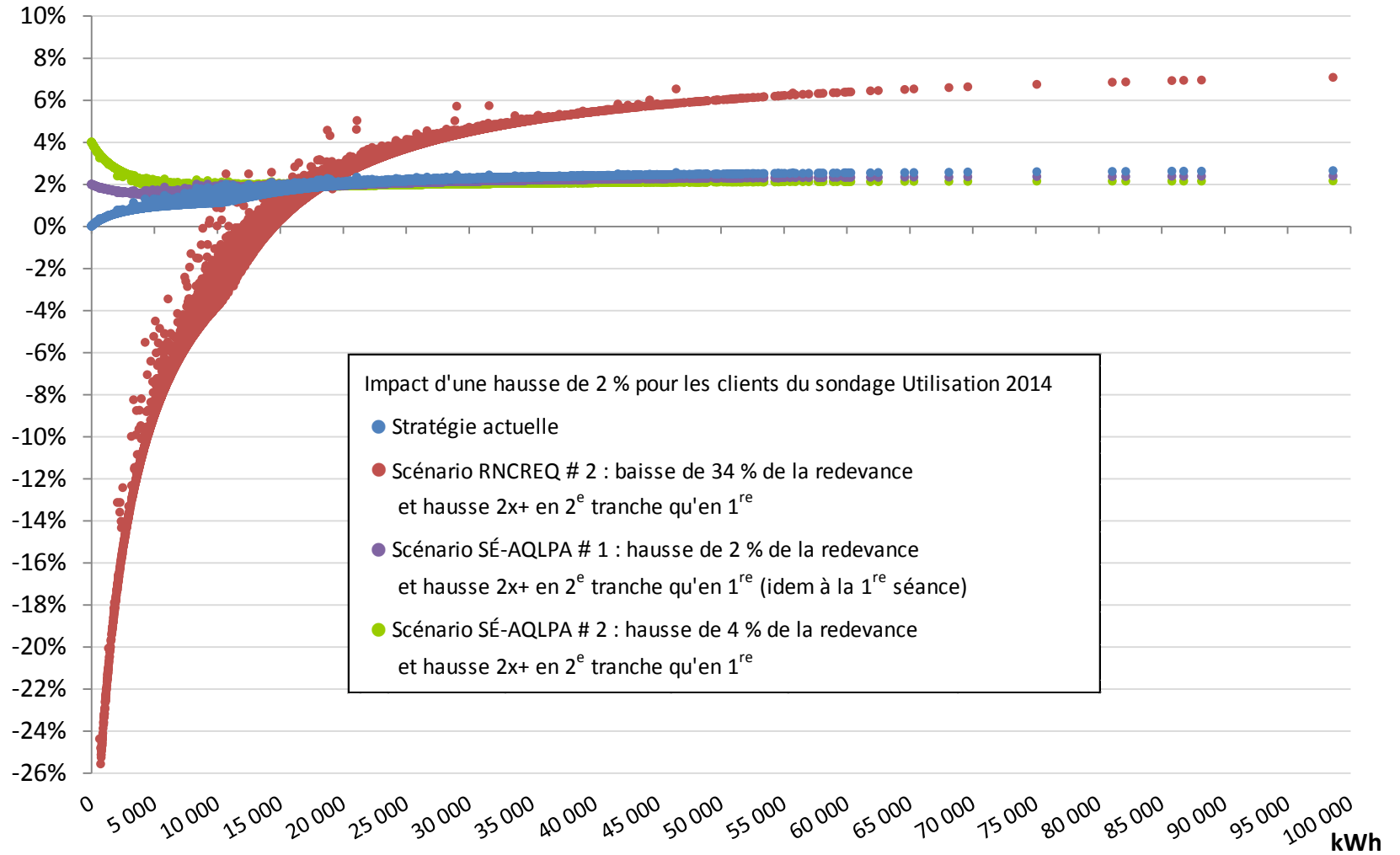
2^e rencontre:
12 juin 2015

ALIMENTER L'AVENIR

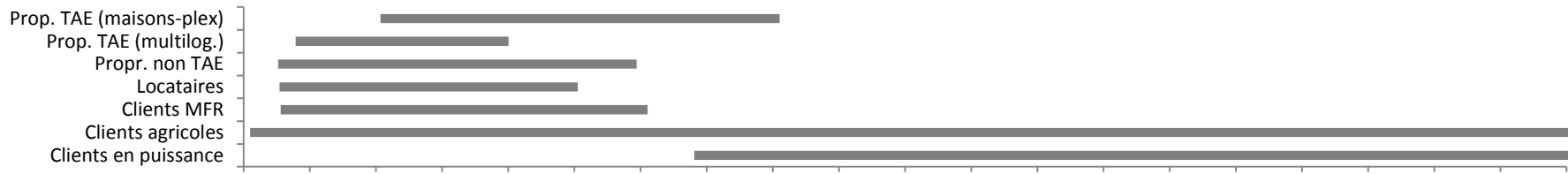
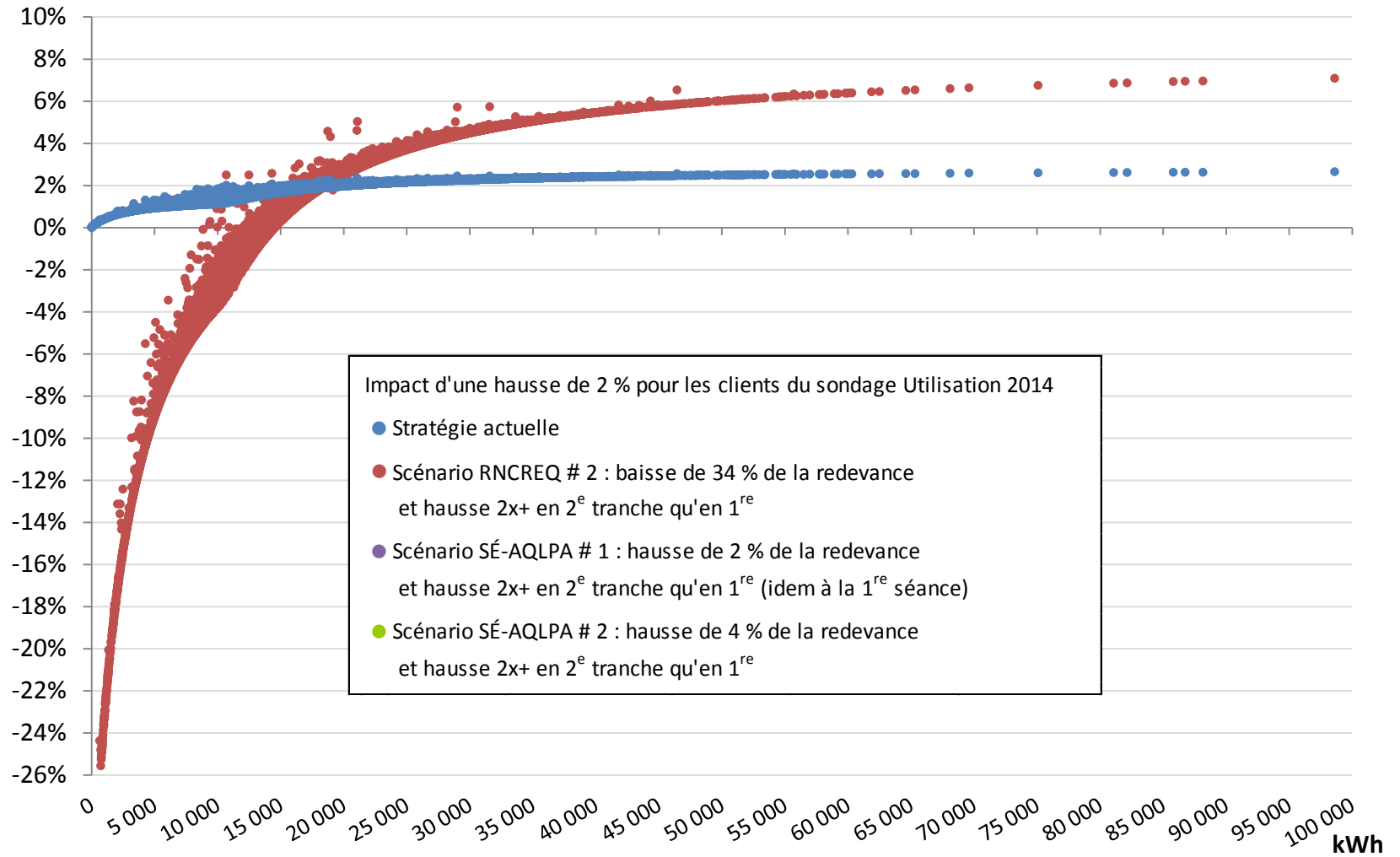
Graphiques d'impacts tarifaires

Impacts tarifaires des scénarios du volet 1 (structure annuelle à 2 tranches d'énergie)

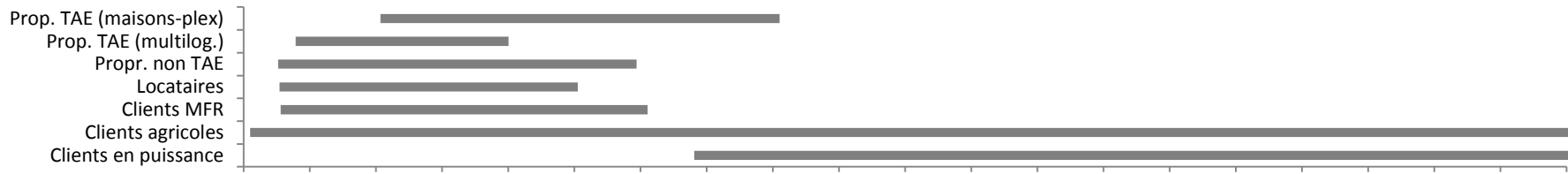
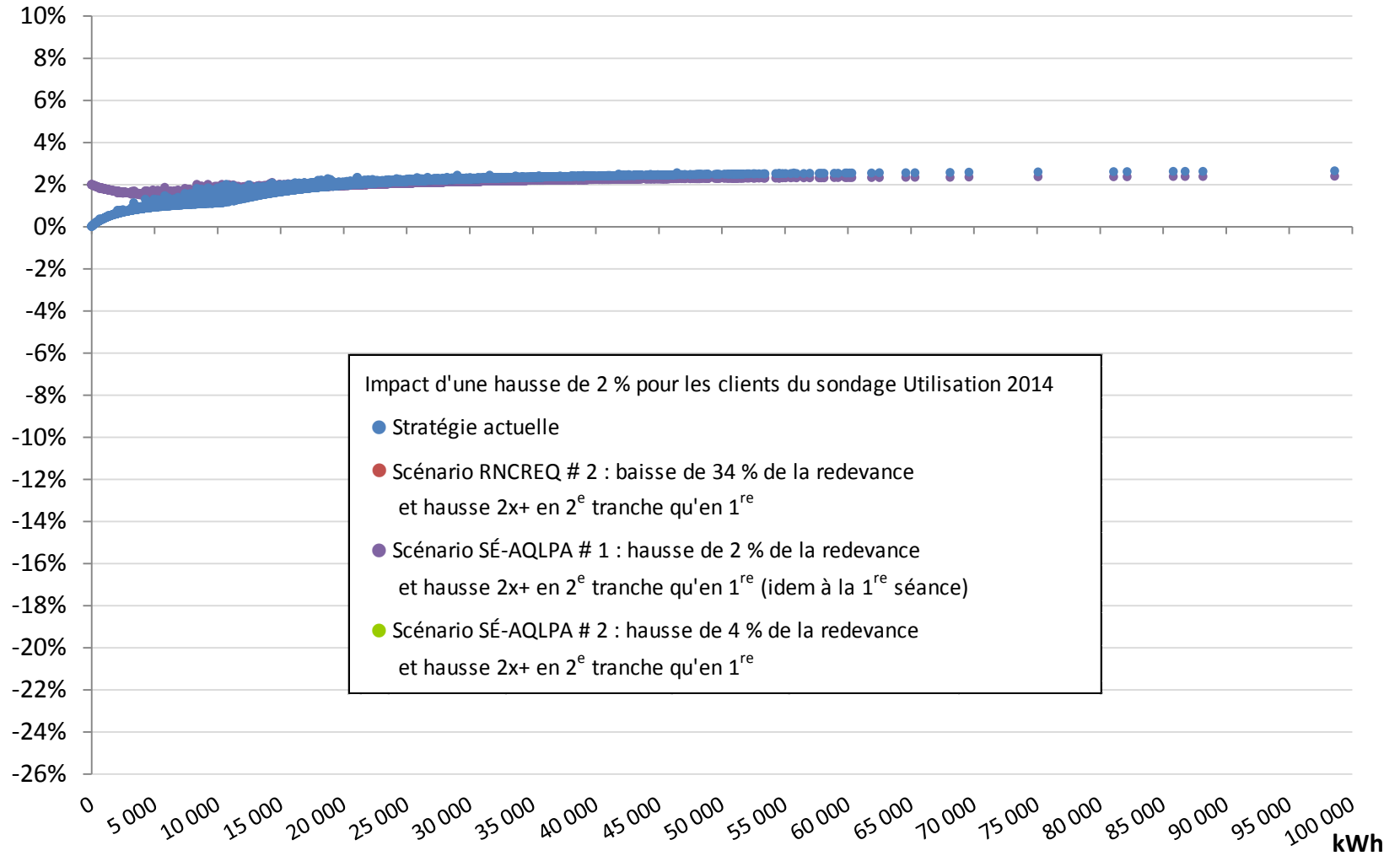
Hausse de 2 %



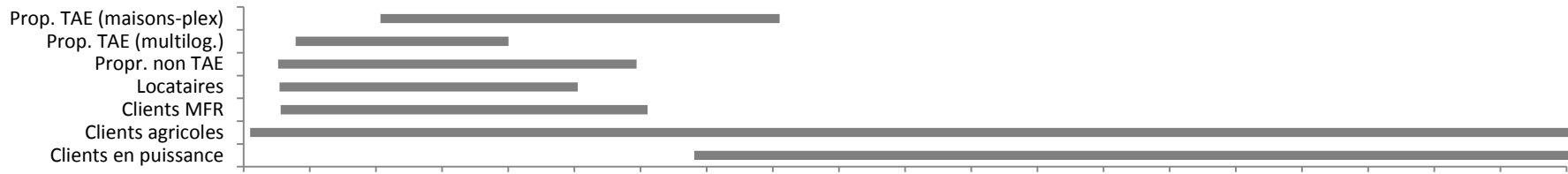
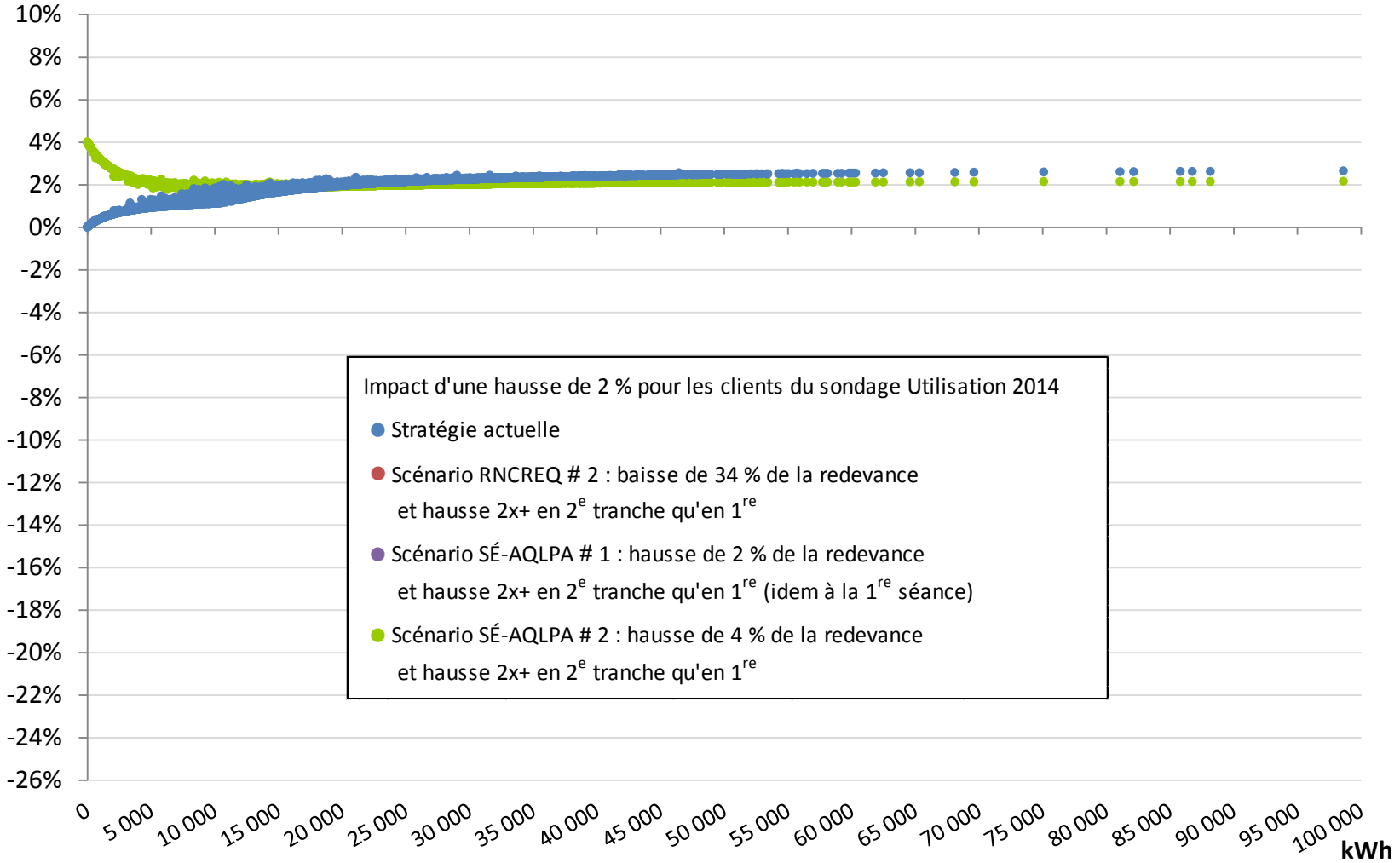
Hausse de 2 %



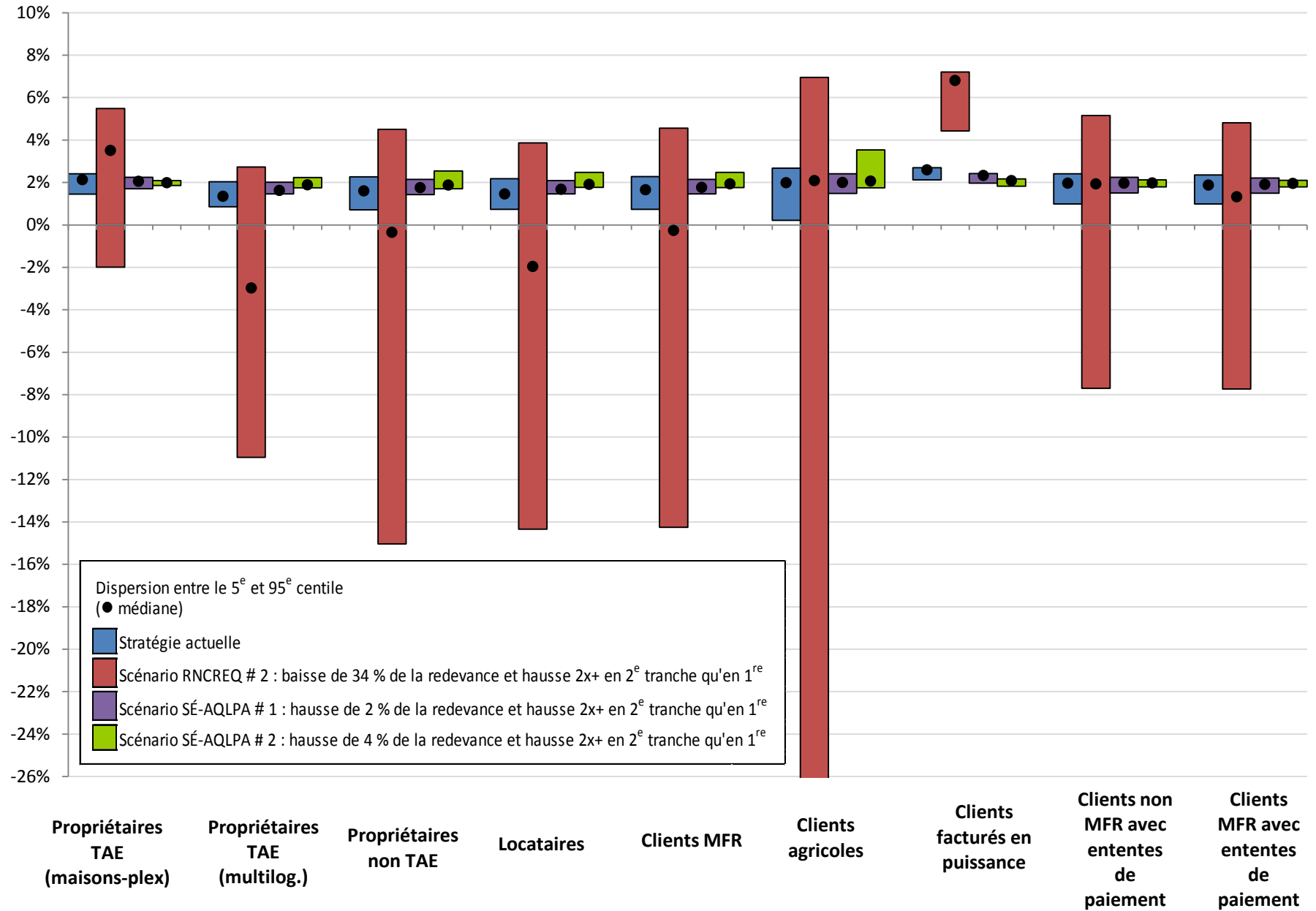
Hausse de 2 %



Hausse de 2 %

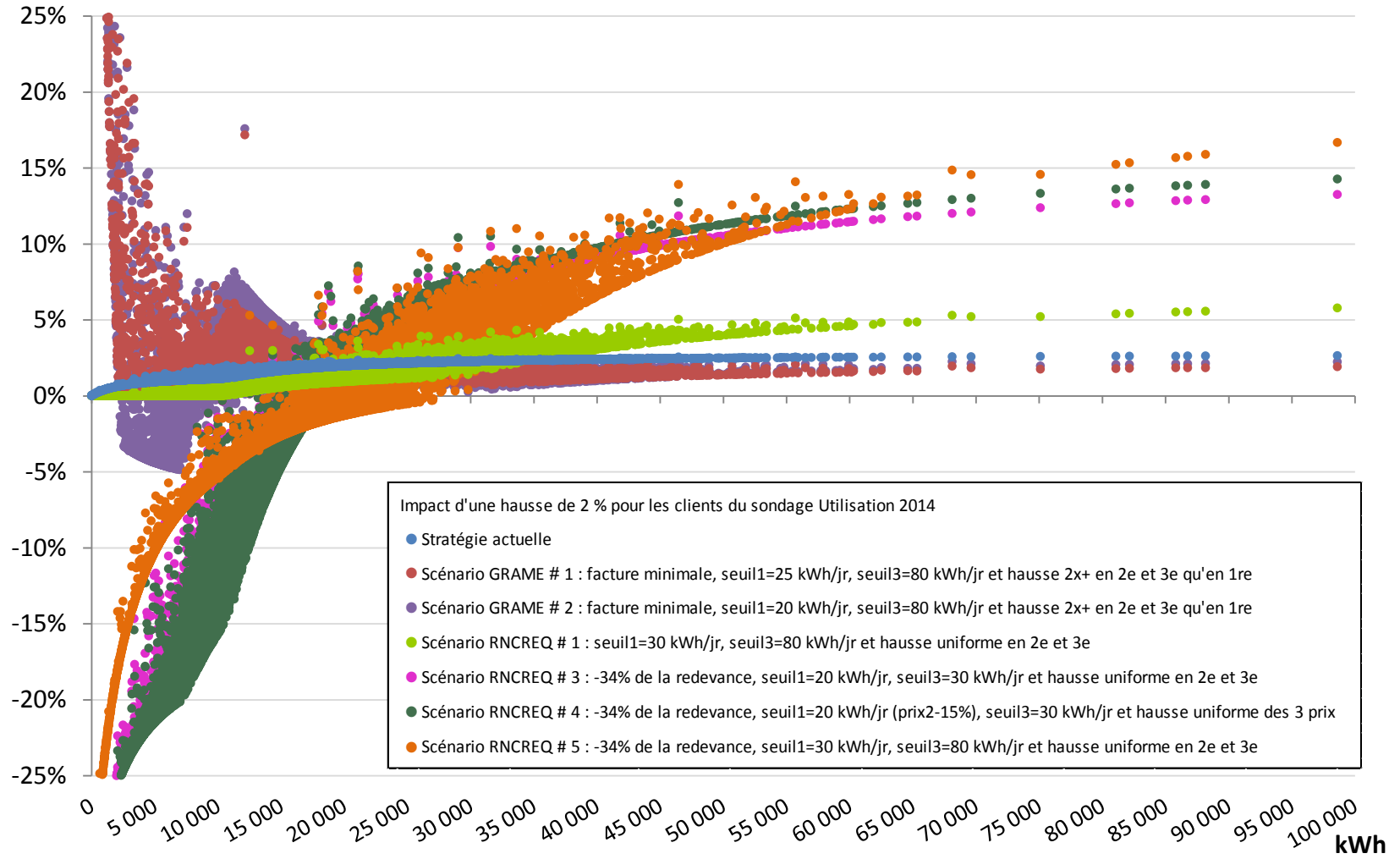


Hausse de 2 %

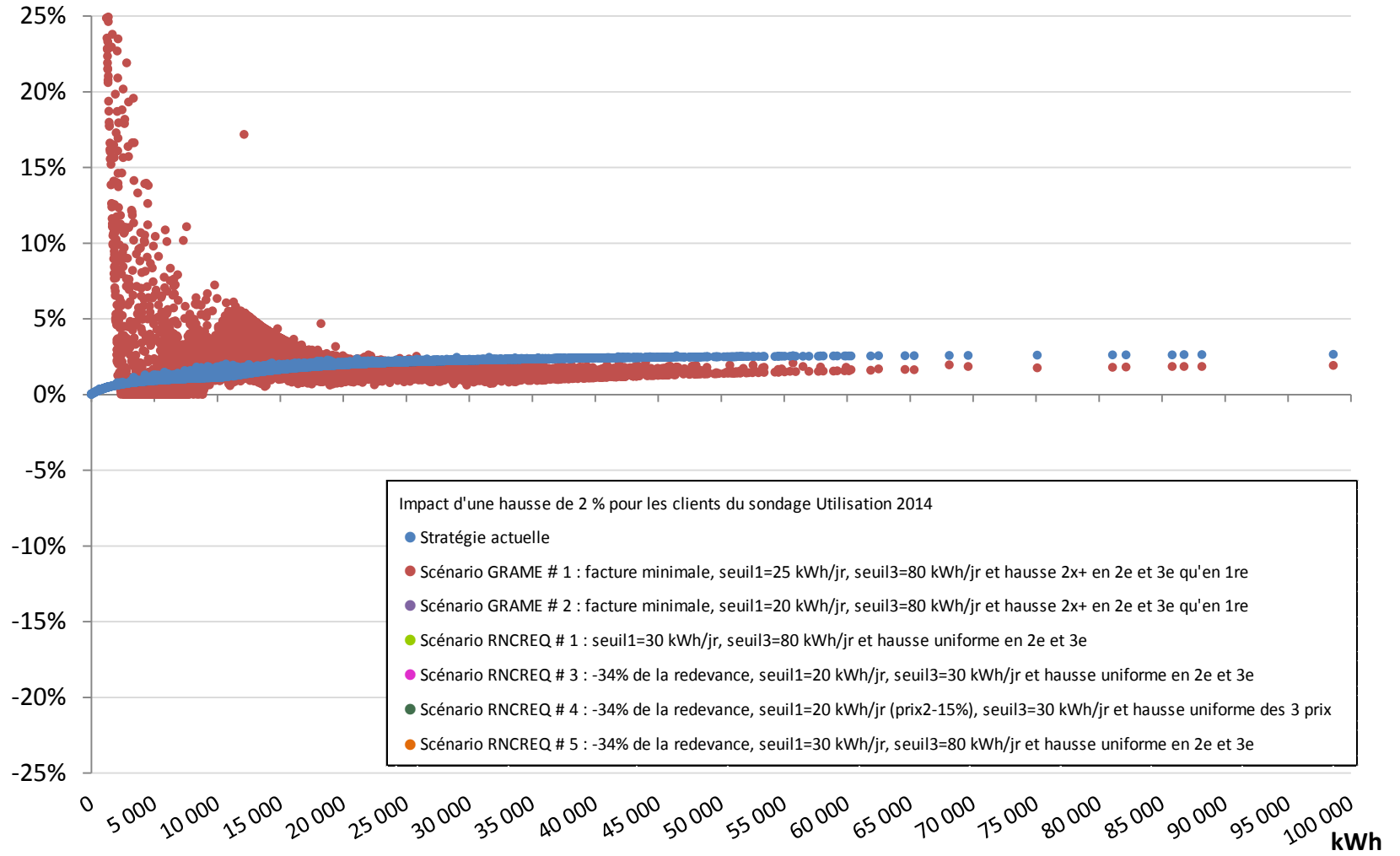


Impacts tarifaires des scénarios du volet 2 (structure annuelle à 3 tranches d'énergie)

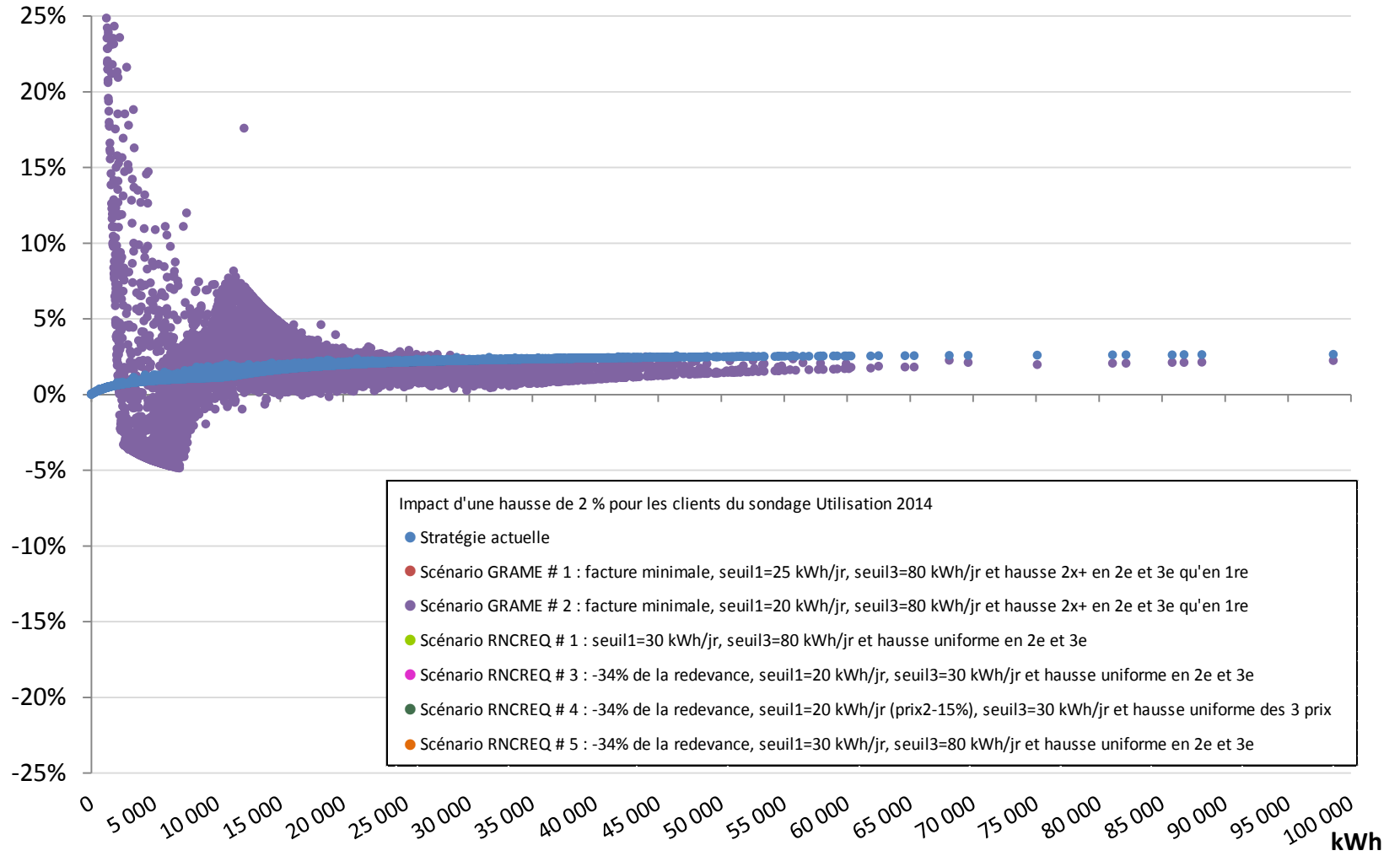
Hausse de 2 %



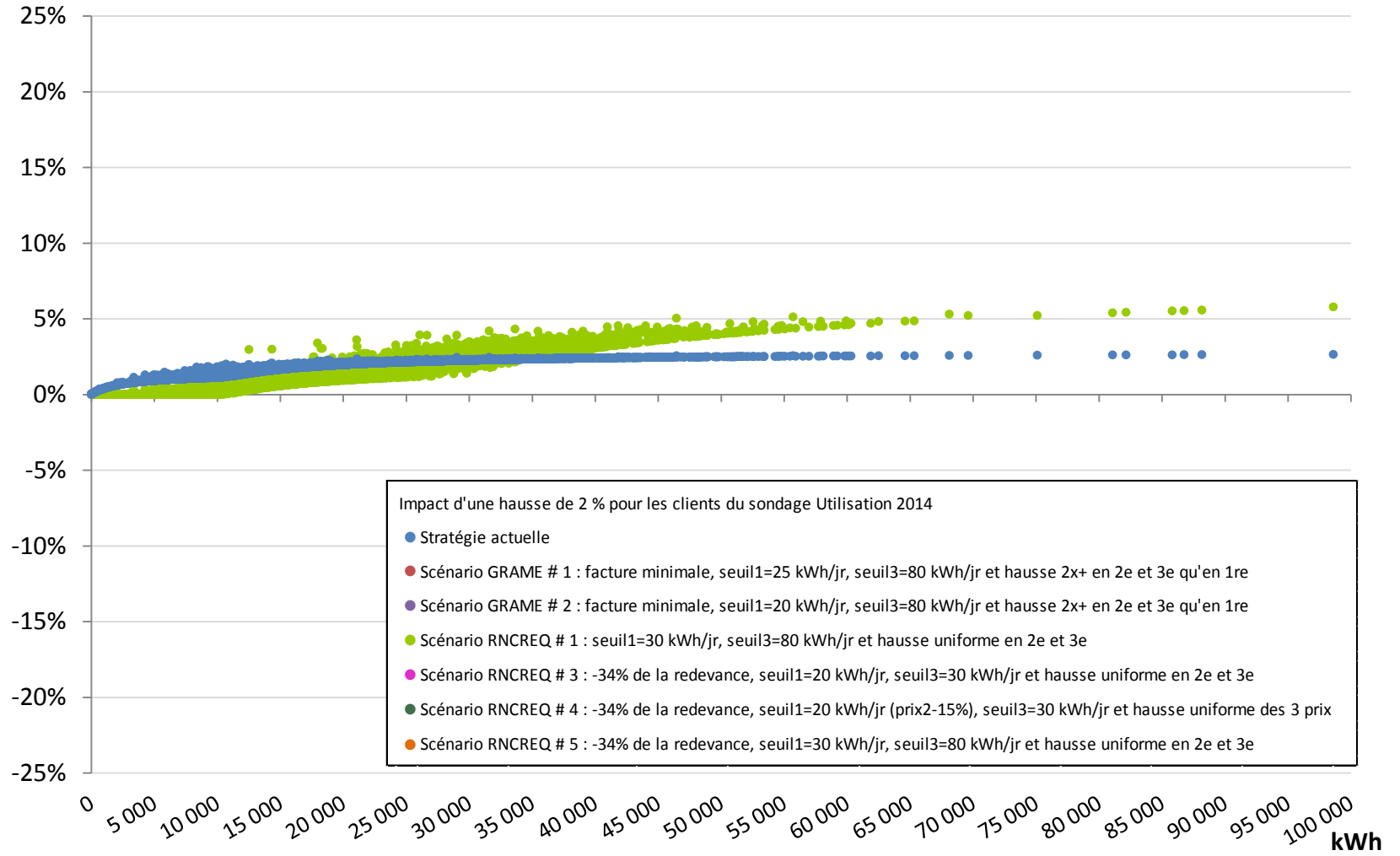
Hausse de 2 %



Hausse de 2 %



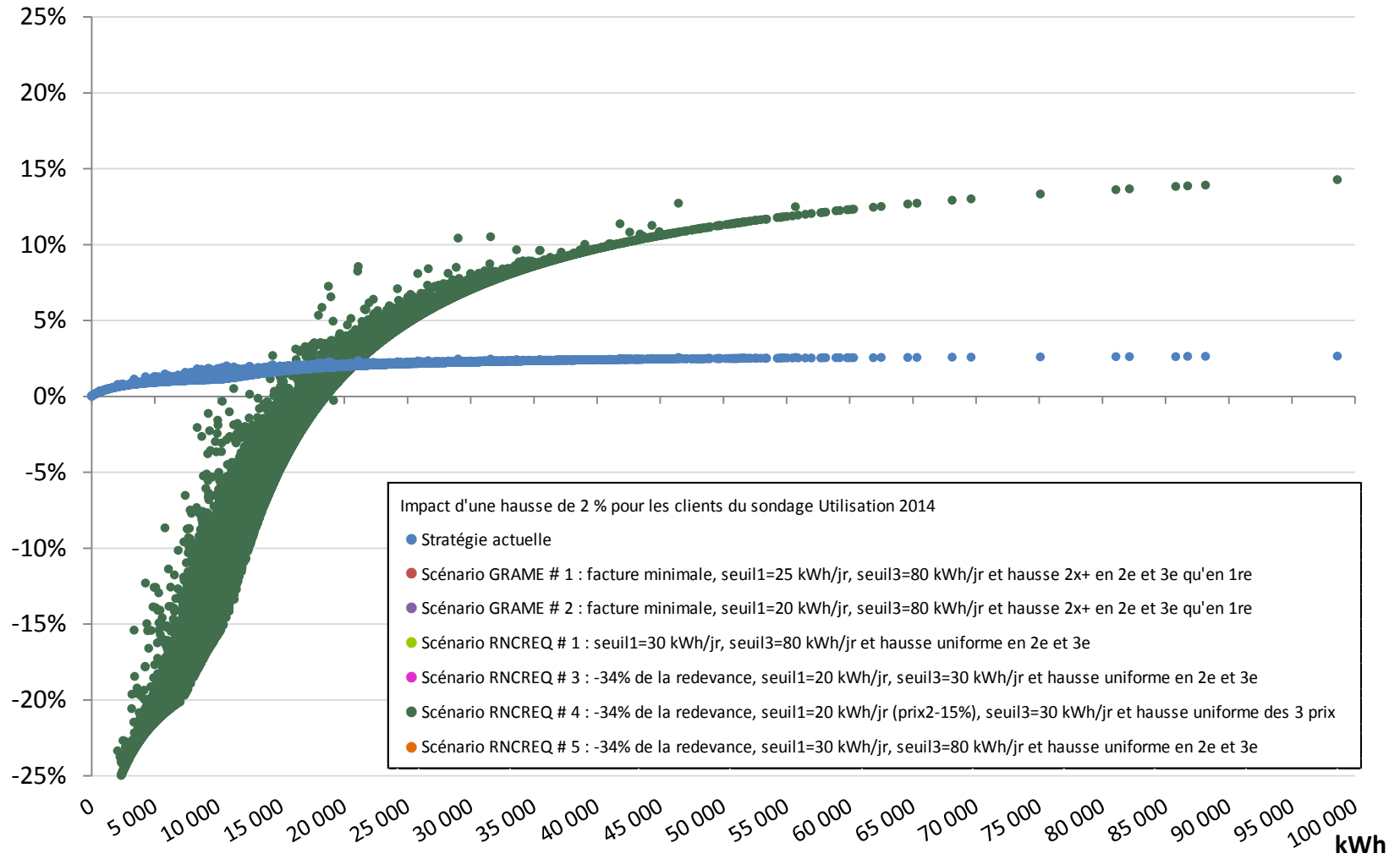
Hausse de 2 %



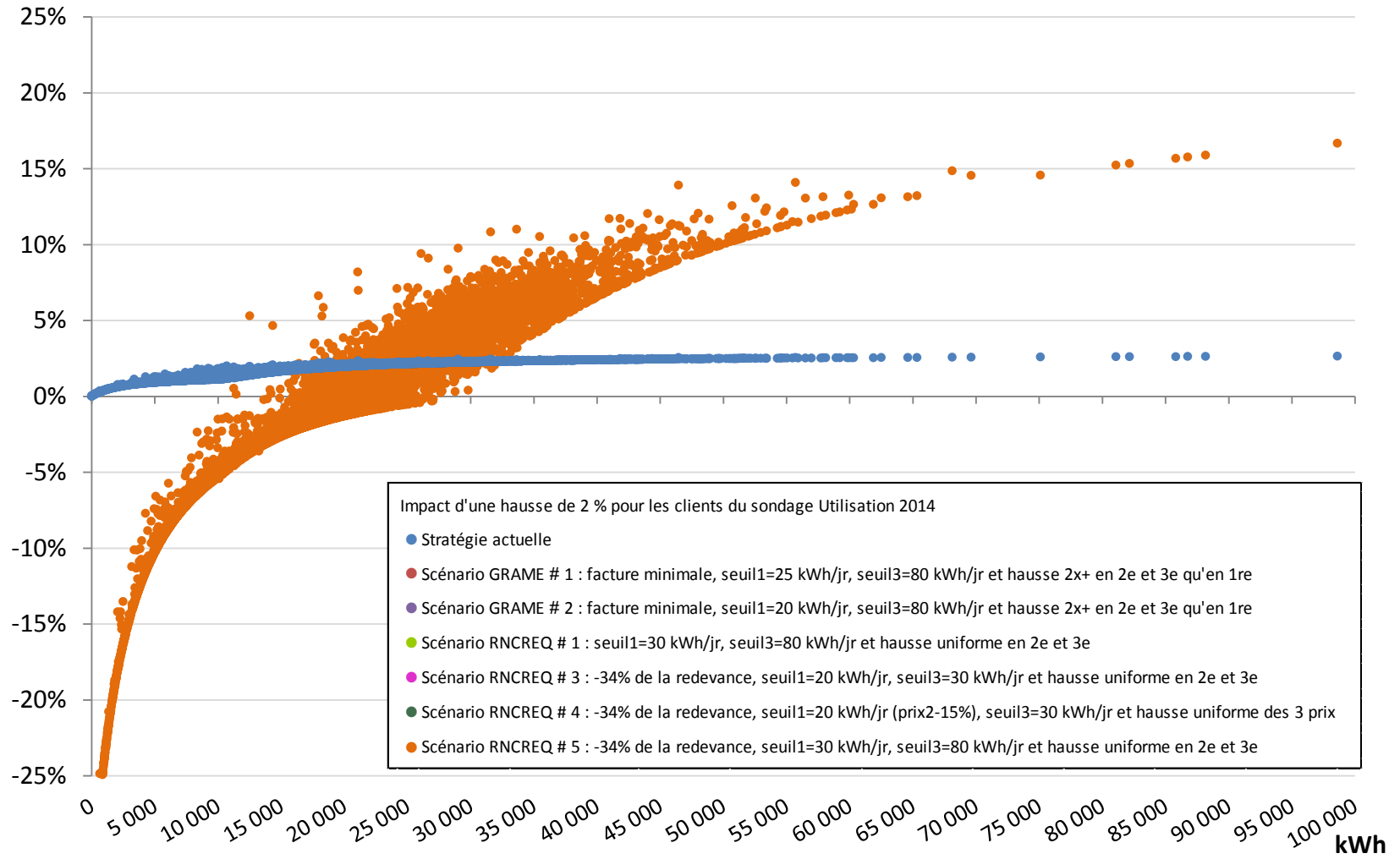
Hausse de 2 %



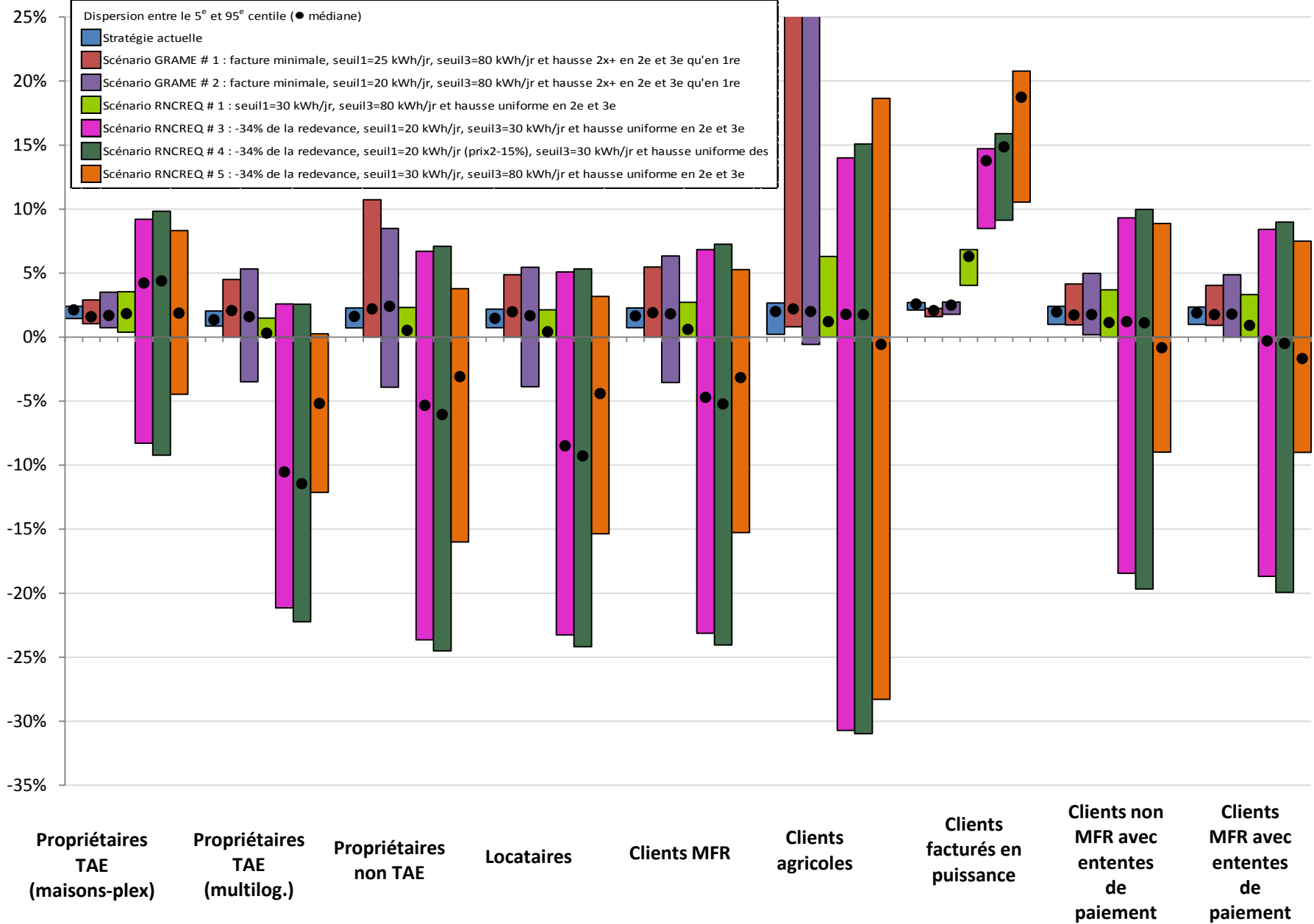
Hausse de 2 %



Hausse de 2 %

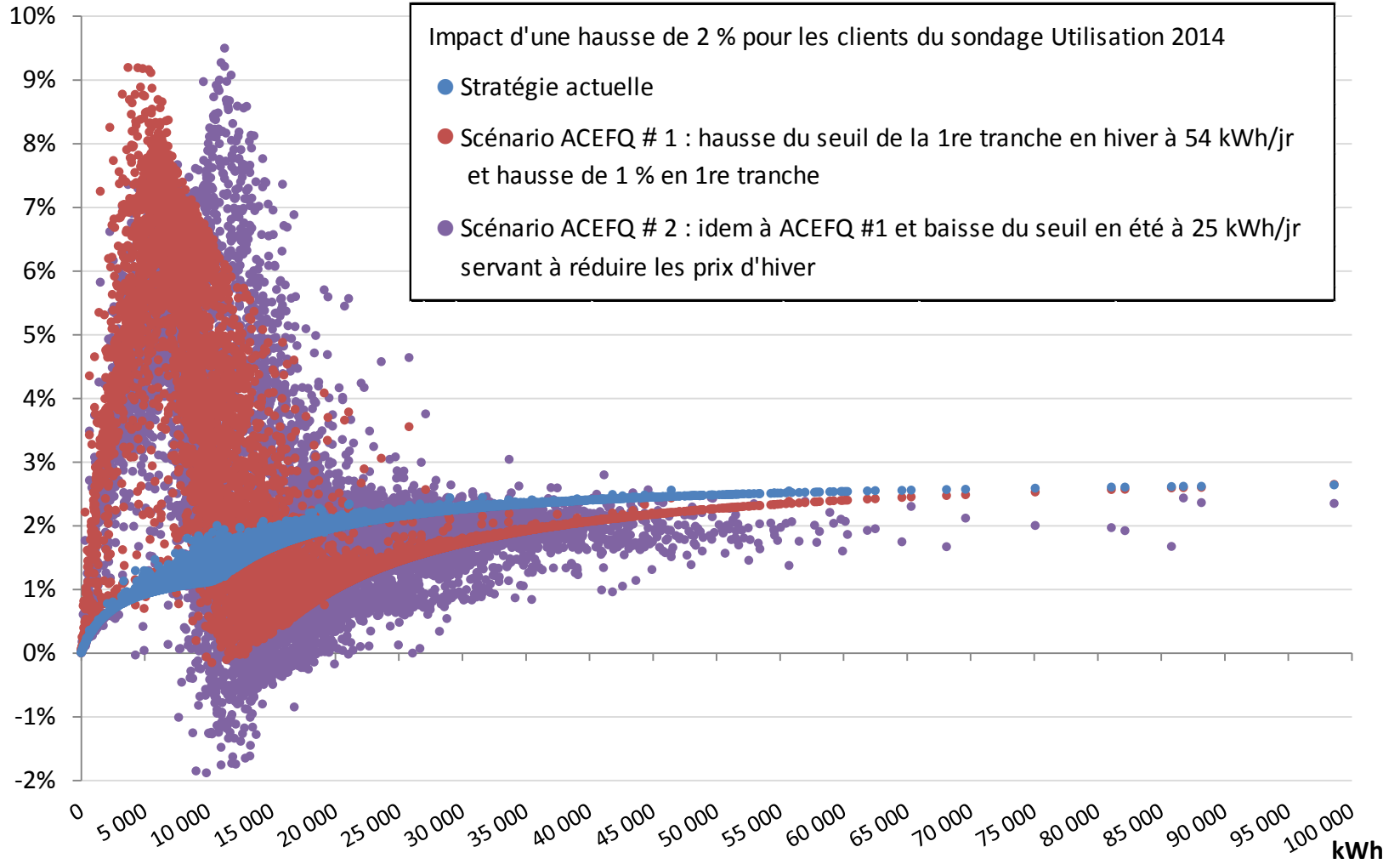


Haussa de 2 %

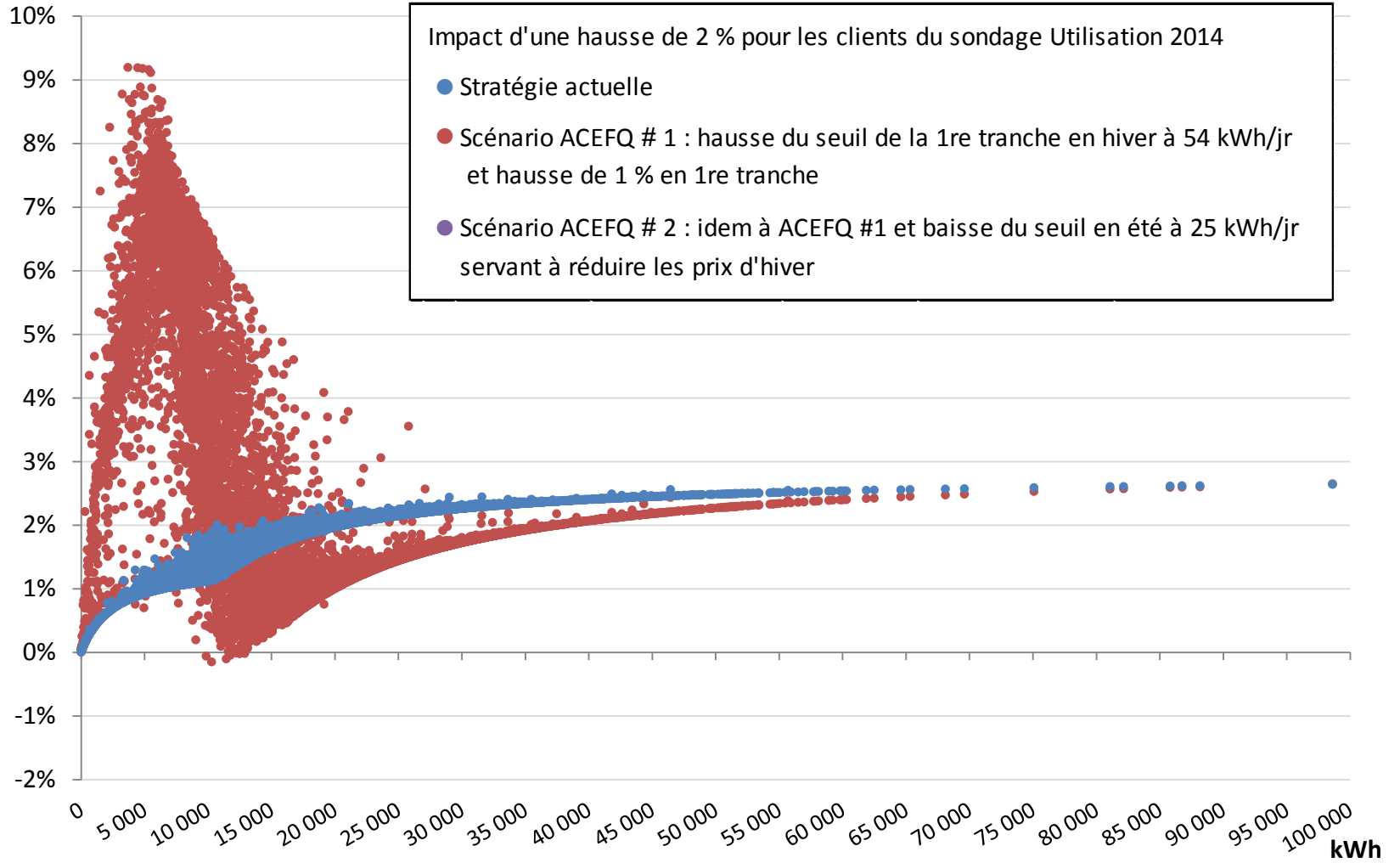


Impacts tarifaires des scénarios du volet 3 (structure saisonnière à 2 tranches d'énergie)

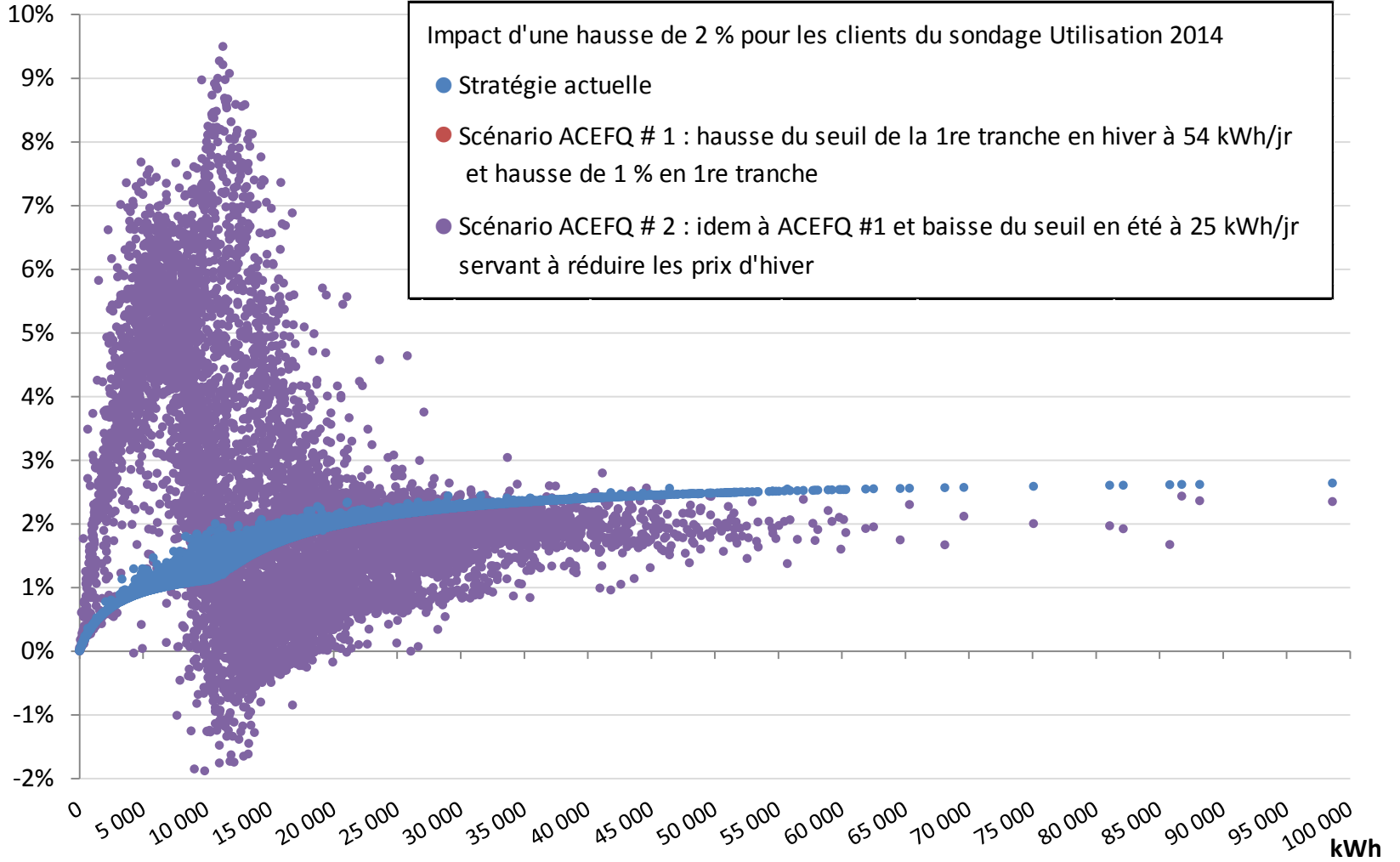
Hausse de 2 %



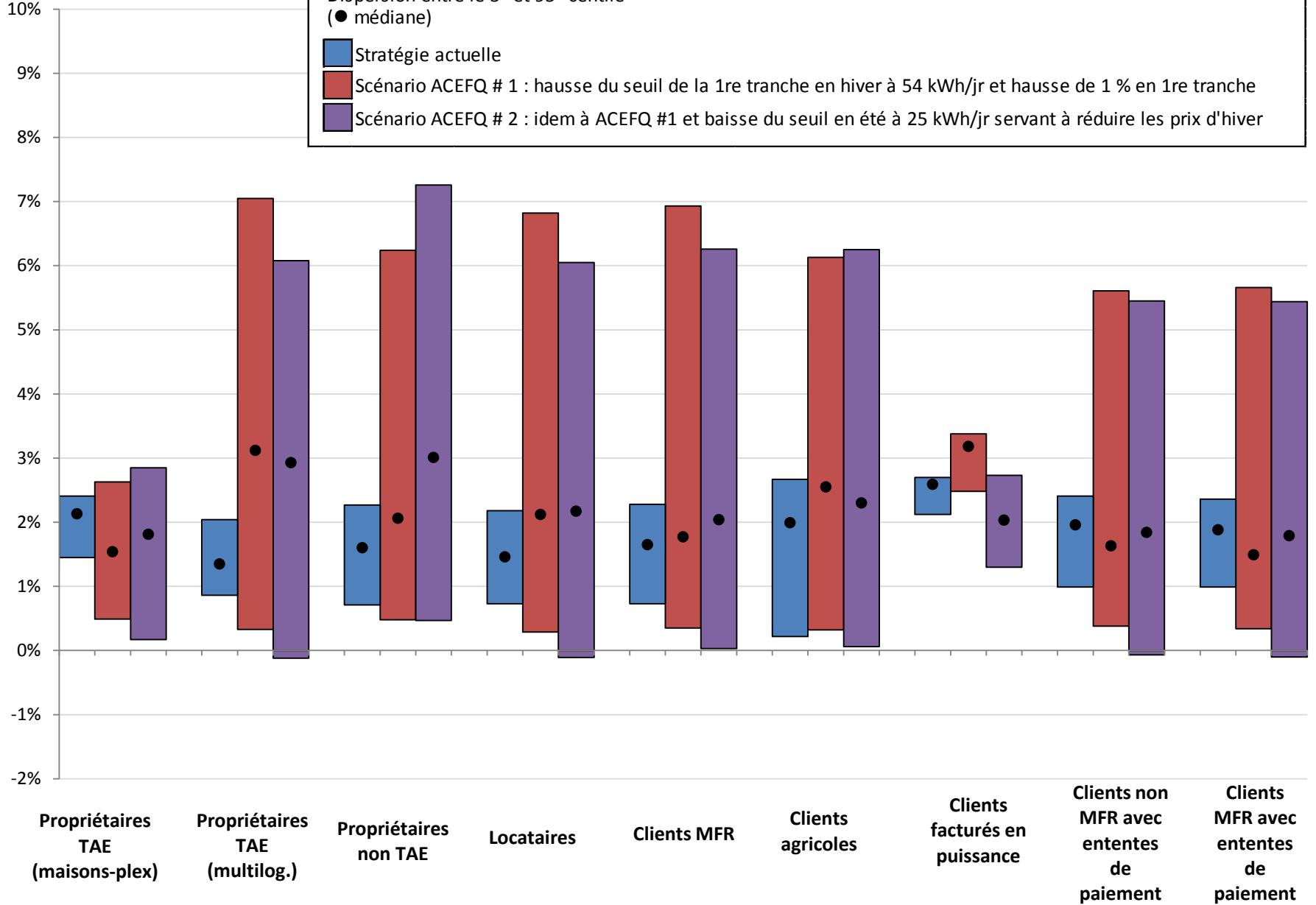
Hausse de 2 %



Hausse de 2 %

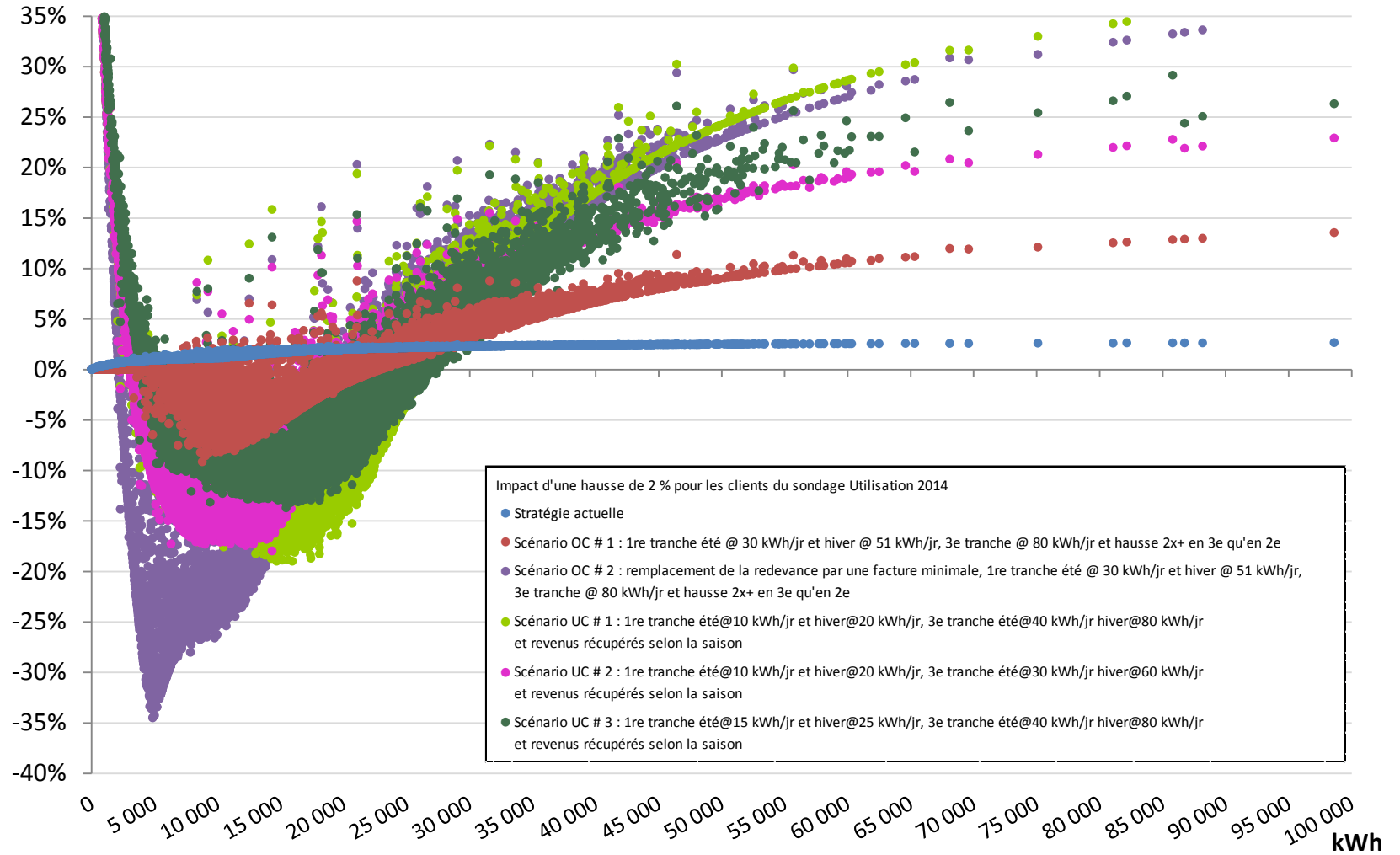


Hausse de 2 %

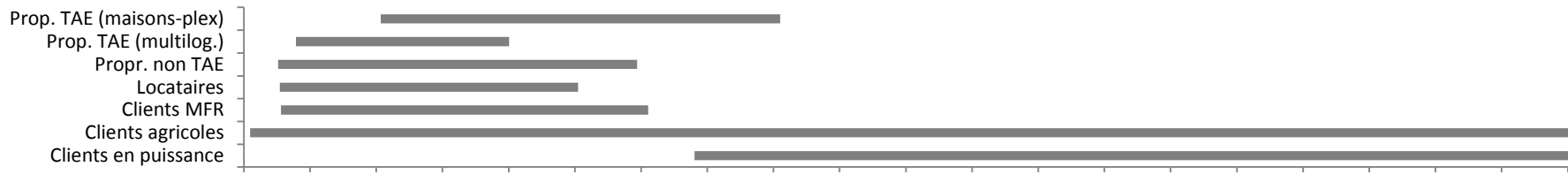
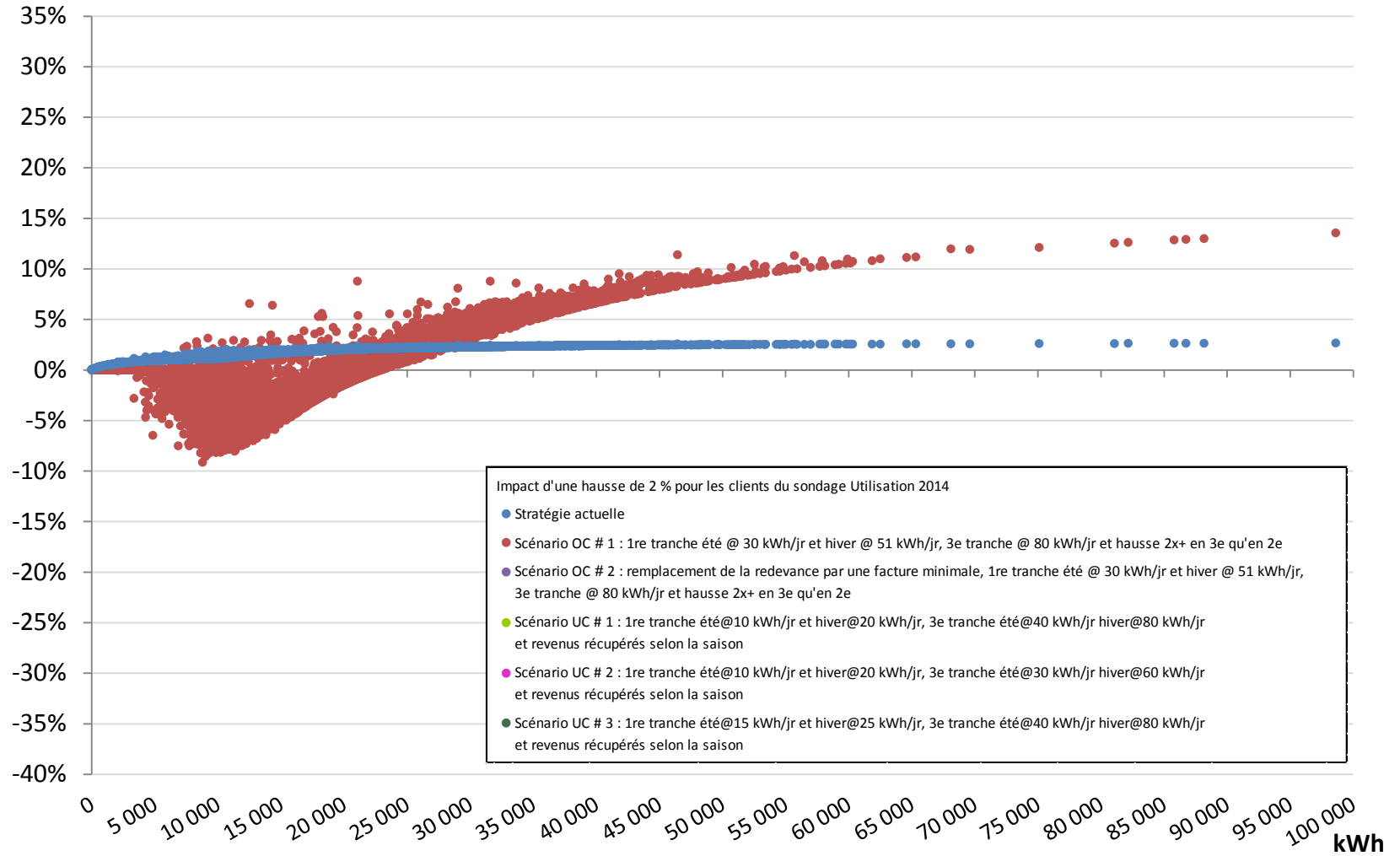


Impacts tarifaires des scénarios du volet 4 (structure saisonnière à 3 tranches d'énergie)

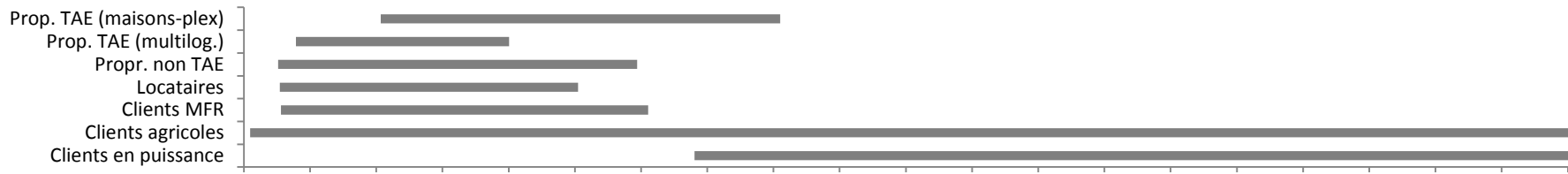
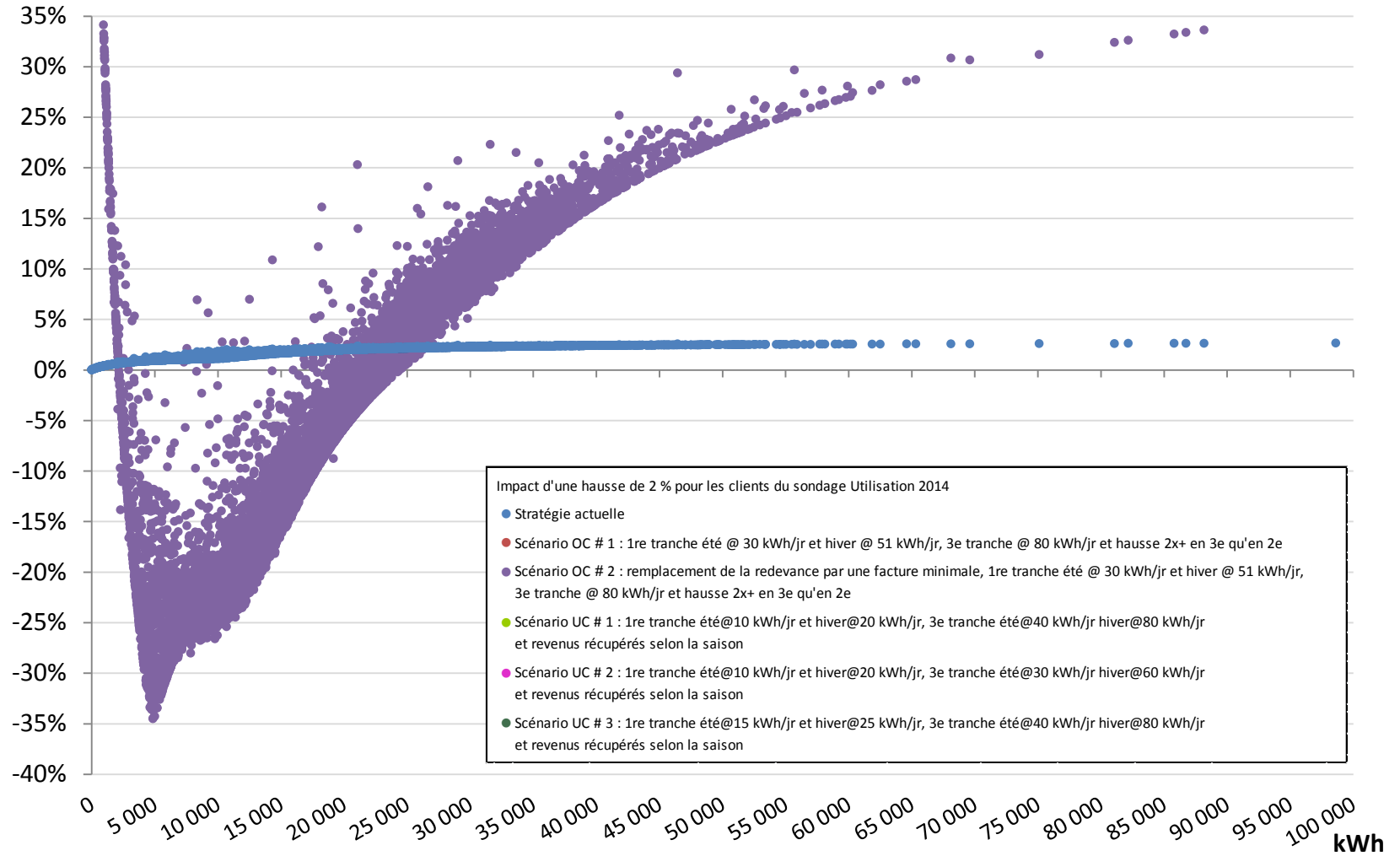
Hausse de 2 %



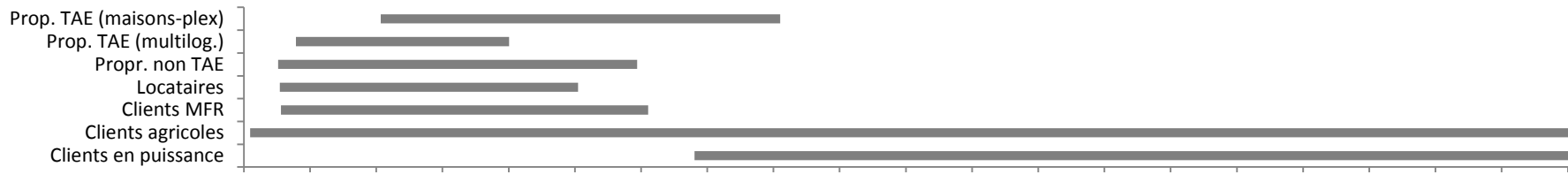
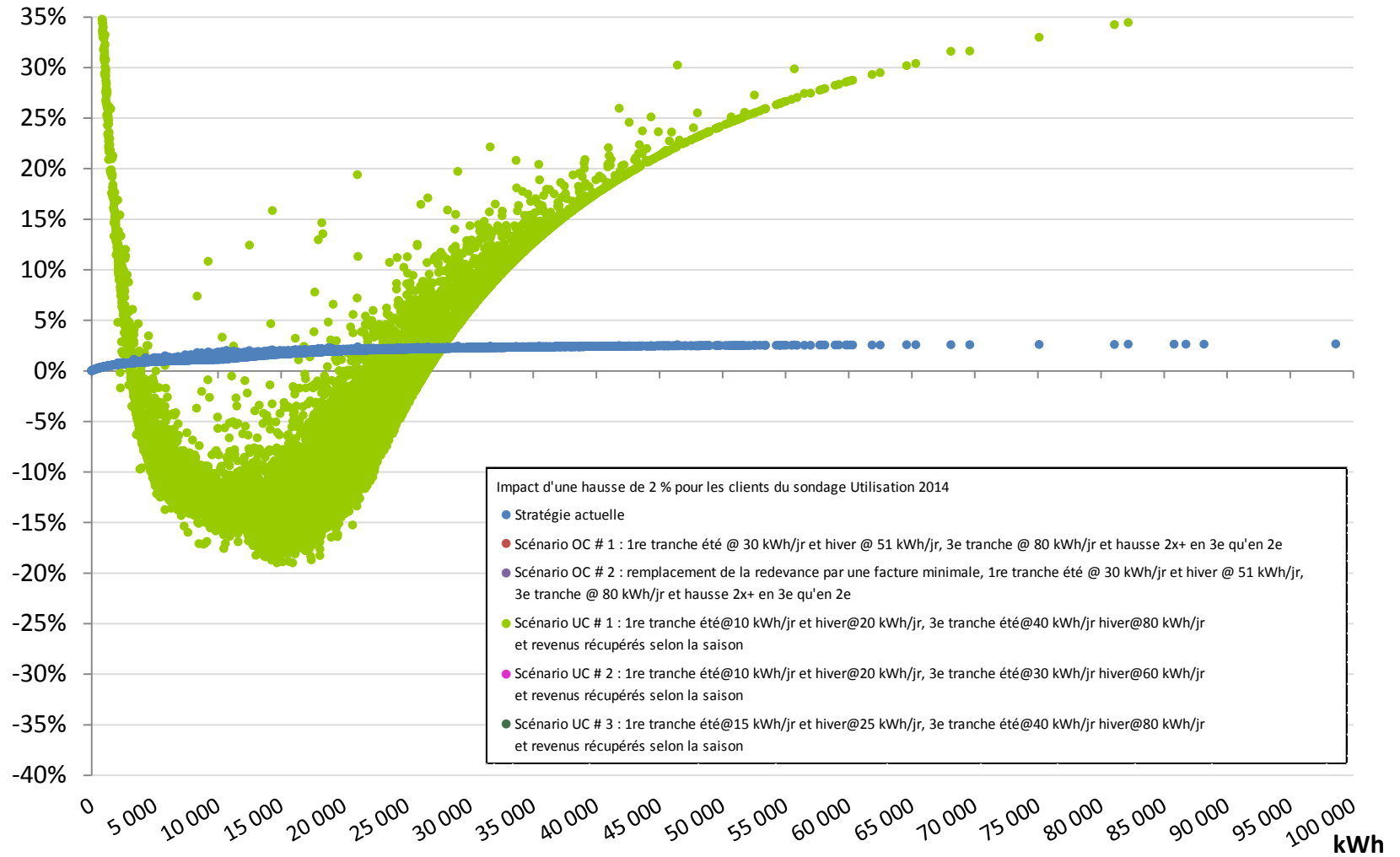
Hausse de 2 %



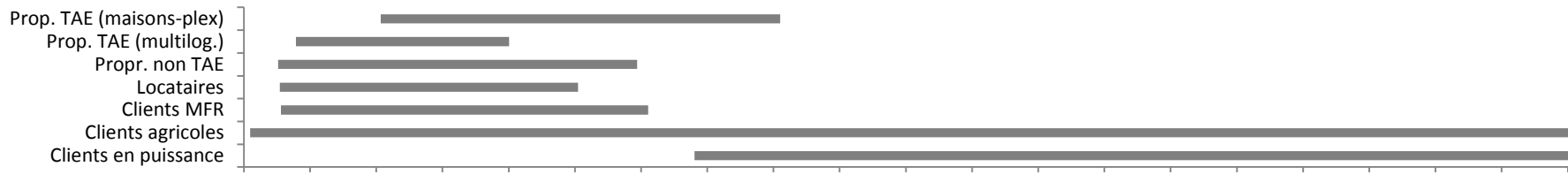
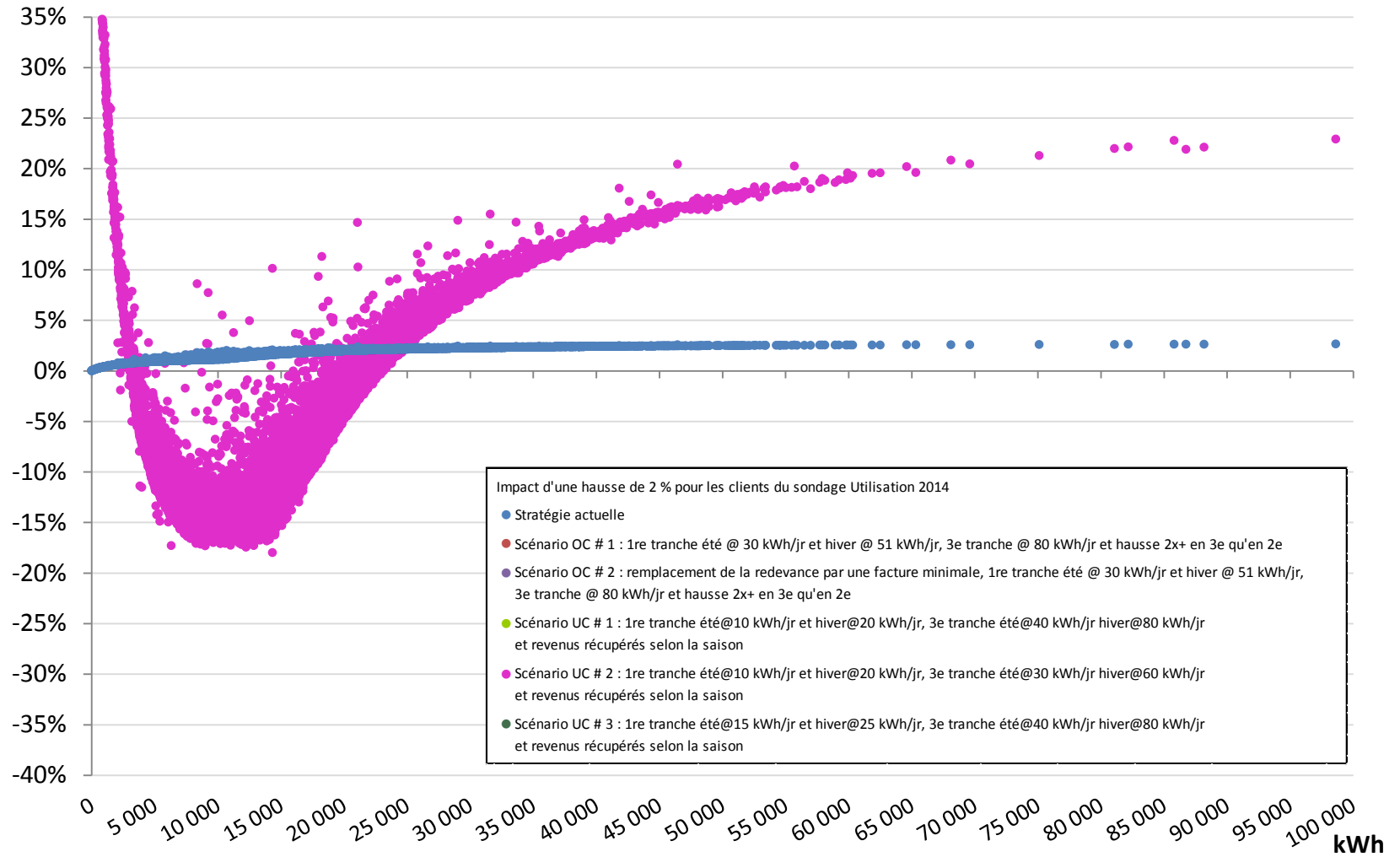
Hausse de 2 %



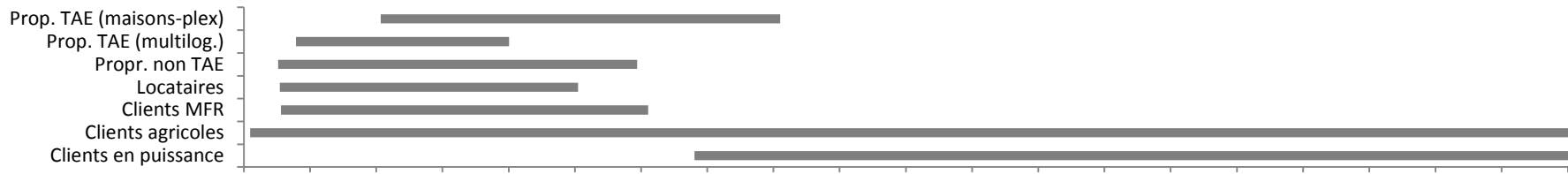
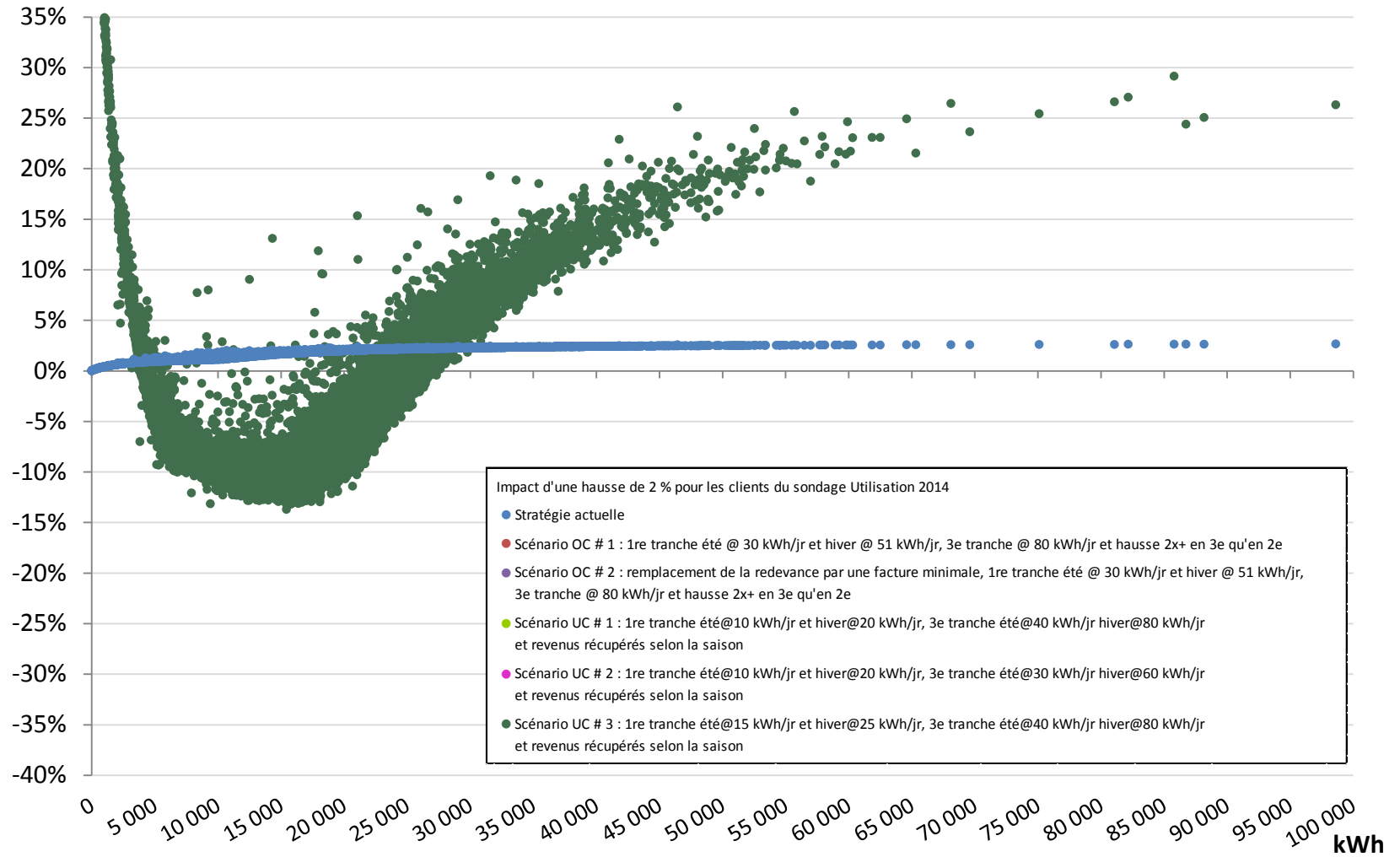
Hausse de 2 %



Hausse de 2 %



Hausse de 2 %



Hausse de 2 %

