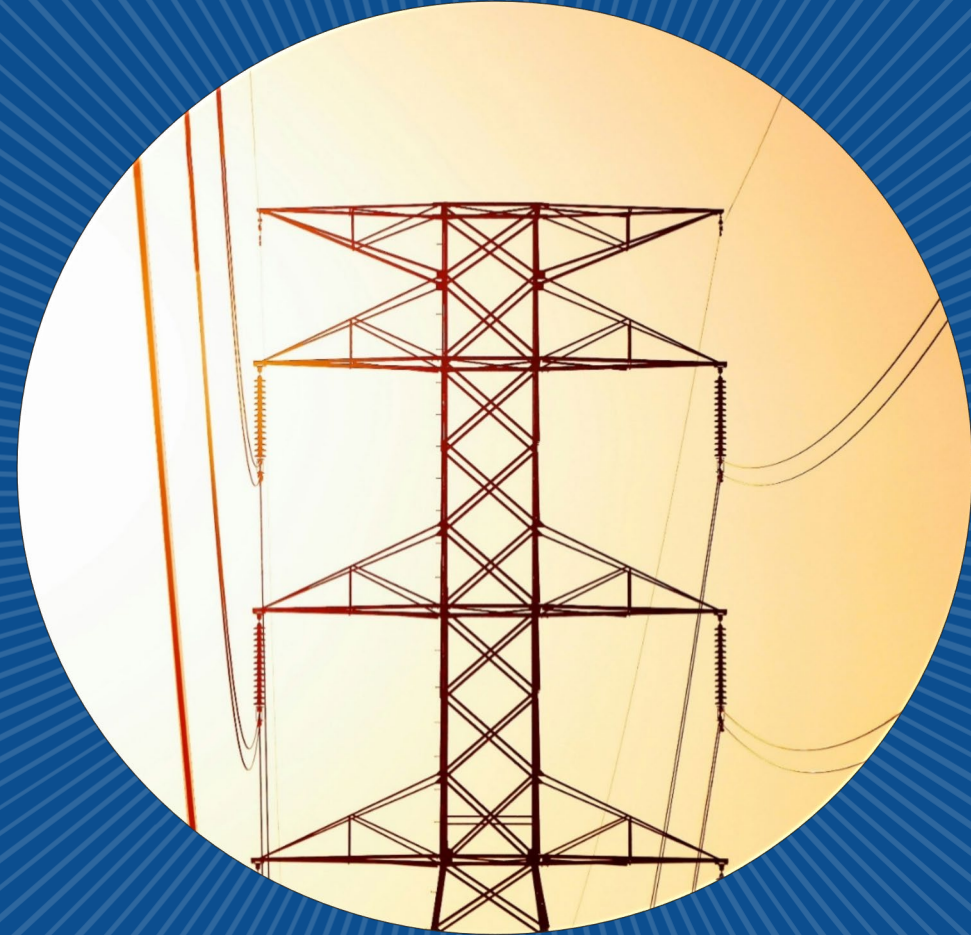




Periodic Data Submittals in Québec

Presented by: Régie de l'énergie
Laurentia Dumitrescu, ing.
Spécialiste en régulation économique

Developed by: Karie Barczak, NPCC Senior Compliance Engineer

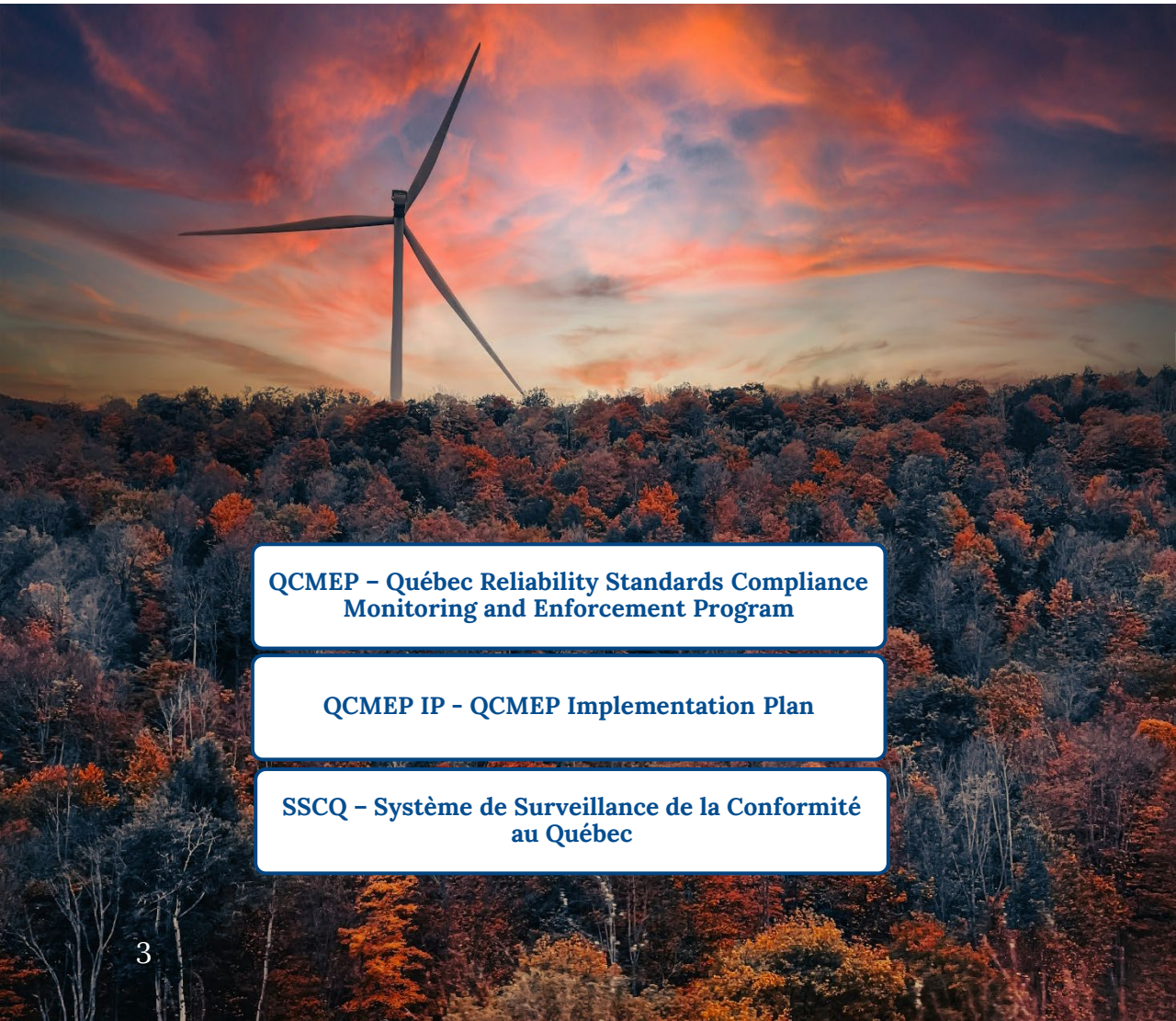


Agenda

- What are Periodic Data Submittals (PDSs)?
- PDS schedule
- PDSs by standard and available forms
- Submitting PDSs
- Resources
- Questions



What are PDSs?



QCMEP – Québec Reliability Standards Compliance Monitoring and Enforcement Program

QCMEP IP – QCMEP Implementation Plan

SSCQ – Système de Surveillance de la Conformité au Québec

Mandatory requests for information to demonstrate compliance with Reliability Standards

- In Québec, PDSs are required by Section 3.6 of the QCMEP and detailed in the QCMEP IP

Quarterly, Annual, or Event Driven

Corrective Action Plans are PDSs

Submitted through the SSCQ, unless otherwise noted



How many Periodic Data Submittals are noted in the QCMEP IP?

- a) None
- b) 1
- c) 8
- d) 20

PDS Schedule



1040 Avenue of the Americas, 4th Floor
New York, NY 10018
www.npcc.org

In 2026, NPCC does not plan to conduct any Self-Certifications for Québec entities.

C. Spot Checks

NPCC, as authorized or requested by the Régie, may initiate a Spot Check at any time. NPCC will provide the registered entity at least twenty (20) days advance notice of a Spot Check.

D. Non-Compliance Self-Reporting

A registered entity shall submit a Non-Compliance Self-Report at the time the registered entity becomes aware that it is not complying or may not have complied with a Reliability Standard declared in effect by the Régie, or that a change in the severity of a previously reported Non-Compliance has occurred. A registered entity shall make reports through the Régie's Système de Surveillance de la Conformité au Québec (SSCQ).

Registered entities should include sufficient information in Self-Reports to permit NPCC to assess the Non-Compliance and the risk it poses to the reliability of the electric power transmission system. This must include a description, scope, and root cause(s) of the Non-Compliance. Self-Reports should also include a comprehensive description of any mitigation measures and whether they have concluded or are still in progress. The mitigation measures must correct the issue, address the contributing cause(s), and prevent recurrence.

E. Periodic Data Submittals

For Reliability Standards that contain an obligation to report periodically or to report only after an event occurs, registered entities shall provide a Periodic Data Submittal for the particular requirement as per the deadlines in Table 6.



Reliability Standard	Requirement	Text	Function	Submit To	Submittal Frequency	Due Dates
BAL-003-2	R1	Each Frequency Response Sharing Group (FRSG) or Balancing Authority that is not a member of a FRSG shall achieve an annual Frequency Response Measure (FRM) (as calculated and reported in accordance with Attachment A) that is equal to or more negative than its Frequency Response Obligation (FRCO) to ensure that sufficient Frequency Response is provided by each FRSG or BA that is not a member of a FRSG to maintain Interconnection Frequency Response equal to or more negative than the Interconnection Frequency Response Obligation.	BA	NPCC and Régie through SSCQ	Annually	According to the dates indicated in Attachment A of the BAL-003-2 Reliability Standard - Timeline for Balancing Authority Frequency Response and Frequency Bias Setting Activities.
EOP-004-4	R2	Each Responsible Entity shall report events specified in EOP-004-4 Attachment 1 to the entities specified per their event reporting Operating Plan by the later of 24 hours of recognition of meeting an event type threshold for reporting or by the end of the Responsible Entity's next business day (4 p.m. local	See Standard	NERC	Event driven as per R2	Within 24 hours of recognition of meeting an event type threshold for reporting or by the end of the next business day if the event occurs

There are 8!

Annual, Quarterly, or Event-Driven submittals

Submitted as noted in the QCMEP IP



PDSs by Standard – BAL-003-2, R1

Functional applicability

- BA

Submit to

- NPCC and the Régie through the SSCQ

Submission frequency

- Annually

Due dates

- According to Attachment A of the standard

Submit information

- As determined by the Registered Entity

Each Frequency Response Sharing Group (FRSG) or Balancing Authority (BA) that is not a member of a FRSG shall achieve an annual Frequency Response Measure (FRM) (as calculated and reported in accordance with Attachment A) that is equal to or more negative than its Frequency Response Obligation (FRO) to ensure that sufficient Frequency Response is provided by each FRSG or BA that is not a member of a FRSG to maintain Interconnection Frequency Response equal to or more negative than the Interconnection Frequency Response Obligation.

PDSs by Standard – EOP-004-4, R2

Functional applicability

- See standard

Submit to

- NERC

Submission frequency

- Event driven per R2

Due dates

- Within 24 hours of recognition of meeting an event type threshold for reporting or by the next business day if the event occurs on a weekend

Forms

- EOP-004-4 Attachment 2 or DOE OE-417

Each Responsible Entity shall report events specified in EOP-004-4 Attachment 1 to the entities specified per their event reporting Operating Plan by the later of 24 hours of recognition of meeting an event type threshold for reporting or by the end of the Responsible Entity's next business day (4 p.m. local time will be considered the end of the business day).

EOP-004-4 – Event Reporting

EOP-004 - Attachment 2: Event Reporting Form

EOP-004 Attachment 2: Event Reporting Form

Use this form to report events. The Electric Reliability Organization will accept the DOE OE-417 form in lieu of this form if the entity is required to submit an OE-417 report. Submit reports to the ERO via one of the following: e-mail: systemawareness@nerc.net, Facsimile 404-446-9770 or voice: 404-446-9780, Option 1. Also submit to other applicable organizations per Requirement R1 "... (e.g., the Regional Entity, company personnel, the Responsible Entity's Reliability Coordinator, law enforcement, or Applicable Governmental Authority)."

Task	Comments
1. Entity filing the report include: Company name: Name of contact person: Email address of contact person: Telephone Number: Submitted by (name):	
2. Date and Time of recognized event. Date: (mm/dd/yyyy) Time: (hh:mm) Time/Zone:	
3. Did the event originate in your system?	Yes <input type="checkbox"/> No <input type="checkbox"/> Unknown <input type="checkbox"/>
Event Identification and Description:	
(Check applicable box) <input type="checkbox"/> Damage or destruction of a Facility <input type="checkbox"/> Physical threat to its Facility <input type="checkbox"/> Physical threat to its BES control center <input type="checkbox"/> BES Emergency: <input type="checkbox"/> firm load shedding <input type="checkbox"/> public appeal for load reduction <input type="checkbox"/> System-wide voltage reduction <input type="checkbox"/> voltage deviation on a Facility <input type="checkbox"/> uncontrolled loss of firm load <input type="checkbox"/> System separation (islanding) <input type="checkbox"/> Generation loss <input type="checkbox"/> Complete loss of off-site power to a nuclear generating plant (grid supply) <input type="checkbox"/> Transmission loss <input type="checkbox"/> Unplanned evacuation of its BES control center <input type="checkbox"/> Complete loss of Interpersonal Communication and Alternative Interpersonal Communication capability at its staffed BES control center <input type="checkbox"/> Complete loss of monitoring or control capability at its staffed BES control center	Written description (optional):

Page 10 of 14

Source: [EOP-004 - Attachment 2](#)



PDSs by Standard – EOP-008-2, R8

Functional applicability

- RC, BA, TOP

Submit to

- NPCC and the Régie through the SSCQ

Submission frequency

- Event driven as per R8

Due dates

- Within six calendar months of the date the functionality is lost

Submit information

- As determined by the Registered Entity

Each Reliability Coordinator, Balancing Authority, and Transmission Operator that has experienced a loss of its primary or backup functionality and that anticipates that the loss of primary or backup functionality will last for more than six calendar months shall provide a plan to its Regional Entity within six calendar months of the date when the functionality is lost showing how it will re-establish primary or backup functionality.

PDSs by Standard – FAC-003-4*, C1.4

Functional applicability

- TO, GO

Submit to

- NPCC and the Régie through the SSCQ

Submission frequency

- Quarterly, but only if there are FAC-003 events in the quarter

Due dates

- Within 20 days after the end of the quarter AND only if there was a qualifying event in the previous quarter

See form ([LINK](#))

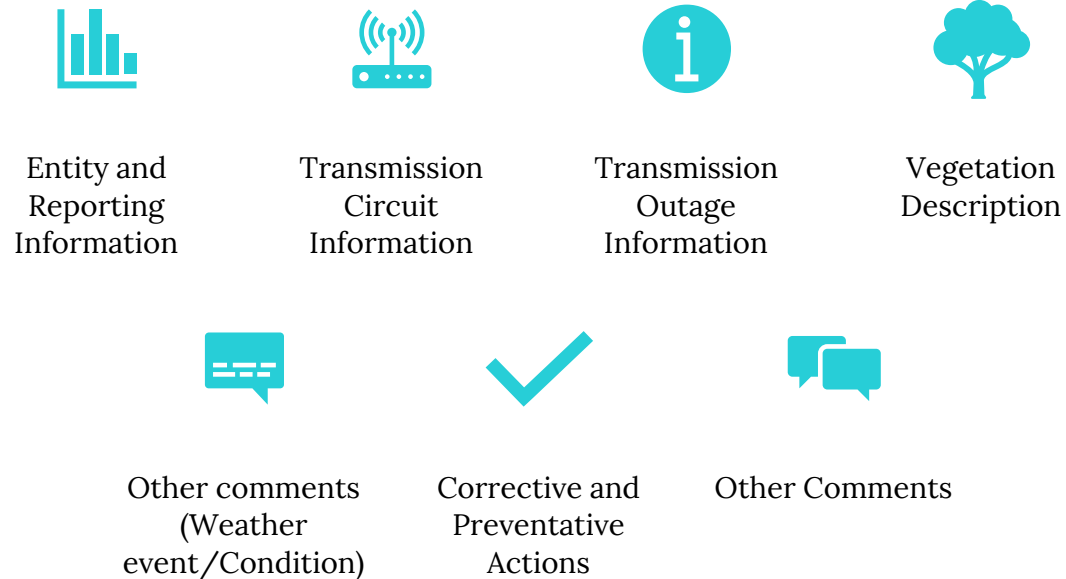
- Detailed on next slides

The applicable Transmission Owner and applicable Generator Owner will submit a quarterly report to its Regional Entity, or the Regional Entity's designee, identifying all Sustained Outages of applicable lines operated within their Rating and all Rated Electrical Operating Conditions as determined by the applicable Transmission Owner or applicable Generator Owner to have been caused by vegetation, except as excluded in footnote 2, and include as a minimum the following: ...

*Note that Version 5 of FAC-003 becomes effective October 1, 2026.



FAC-003-4* – Outage Reporting



Registered Entity Instructions
FAC-003 <i>Outage Reporting Form</i>
Reporting Instructions in case of Outage
<ul style="list-style-type: none"> The Registered Entity will use this Outage Reporting Form if any Sustained Outages have occurred per FAC-003. Reports are due on the 20th day of the month immediately following the end of the preceding calendar quarter.
<p>Submission Frequency (Periodic Data Submittal Schedule is included in the Québec Annual Implementation Plan for a given calendar year):</p> <p>Only if there were FAC-003 events in the quarter, per the following schedule - Quarter Due Date:</p> <p>January 1 through March 31: April 20 April 1 through June 30: July 20 July 1 through September 30: October 20 October 1 through December 31: January 20</p>
<p>Guidelines</p> <p>The applicable Transmission Owner and applicable Generator Owner will submit a quarterly report to NPCC and the Régie identifying all¹ Sustained Outages of applicable lines² operated within their Rating and all Rated Electrical Operating Conditions as determined by the applicable Transmission Owner or applicable Generator Owner to have been caused by vegetation.</p> <p>1: This requirement does not apply to circumstances that are beyond the control of a Transmission Owner or Generator Owner subject to this reliability standard, including natural disasters such as earthquakes, fires, tornados, hurricanes, landslides, wind shear, fresh gale, major storms as defined either by the Transmission Owner, Generator Owner, or an applicable regulatory body, ice storms, and floods; human or animal activity such as logging, animal severing tree, vehicle contact with tree, or installation, removal, or digging of vegetation.</p> <p>2: Applicable lines, including but not limited to those that cross lands owned by provincial, public, private, or Indigenous nations, are defined as: Each overhead transmission line operated at 200kV or higher; Each overhead transmission line operated below 200 kV identified as an element of an IROL by the Reliability Coordinator; Each overhead transmission line identified above located outside the fenced area of the switchyard, station or substation and any portion of the span of the transmission line that is crossing the substation fence.</p>
<p>Instructions</p> <ol style="list-style-type: none"> Complete information in the <i>Outage Reporting Form</i> tab based on the the guidelines above. Contact NPCC and the Régie if there are any questions. If necessary, contact the Régie (secretariat-PSCAQ@regie-energie.qc.ca) to create a new mandate in the SSCQ for this submission. Complete the information in the <i>Outage Reporting Form</i> tab, submit this form to the Documents webpart of the created mandate in the SSCQ prior to the deadline listed above. Notify NPCC and the Régie of its upload.

*Note that Version 5 of FAC-003 becomes effective October 1, 2026.



PDSs by Standard – PRC-002-2*, R12

Functional applicability

- GO, TO

Submit to

- NPCC and the Régie through the SSCQ

Submission frequency

- Event driven as per R12

Due dates

- Within 90 calendar days of the discovery of a failure of the recording capability for the sequence of events recording (SER), fault recording (FR), or dynamic Disturbance recording (DDR) data

See form ([LINK](#))

- Details on the following slides

Each Transmission Owner and Generator Owner shall, within 90 calendar days of the discovery of a failure of the recording capability for the SER, FR or DDR data, either:

- Restore the recording capability, or
- Submit a Corrective Action Plan (CAP) to the Regional Entity and implement it.

*Note that Version 5 of PRC-002 becomes effective July 1, 2026. Version 4 will never be in effect.



PRC-002-2*, R12 Form – Instructions Tab

Registered Entity Instructions
PRC-002 R12 Corrective Action Plan Event Driven Reporting Instructions
<p>PRC-002 R12 requires that Transmission Owners and Generator Owners shall, within 90 calendar days of the discovery of a failure of the recording capability for the SER, FR, or DDR data, either:</p> <ul style="list-style-type: none">• Restore the recording capability, or• Submit a Corrective Action Plan (CAP) to the Regional Entity and implement it. <p>This form and the Corrective Action Plan itself will be submitted via the SSCQ. The Registered Entity will be required to maintain all relevant evidence of the loss and subsequent re-establishment of recording capability. Registered Entities should provide all relevant information listed. Contact NPCC and the Régie with any questions.</p>
Submission Frequency: Event driven Requirement within 90 calendar days of discovery of a failure of the recording capability
Instructions <ol style="list-style-type: none">1. Complete information in the Corrective Action Plan tab.2. If necessary, contact the Régie (secretariat-PSCAQ@regie-energie.qc.ca) to create a new mandate in the SSCQ for this submission.3. Submit this form to the SSCQ within the deadlines listed above and notify NPCC and the Régie of its upload.4. Retain all relevant evidence of the loss and subsequent re-establishment of recording capability.

Source: [PRC-002, R12 Form](#)

*Note that Version 5 of PRC-002 becomes effective July 1, 2026. Version 4 will never be in effect.



PDSs by Standard – PRC-023-4*, R5

Functional applicability

- GO, TO, DP

Submit to

- NPCC and the Régie through the SSCQ

Submission frequency

- Annually, but only if the entity chooses to set relays using Criterion 12 of R1

Due dates

- If the entity chooses to set relays on circuits according to Criterion 12 of R1, the entity must at least once each calendar year, with no more than 15 months between reports, provide the updated list to NPCC.

See form ([LINK](#))

- Detailed on the following slides

Each Transmission Owner, Generator Owner, and Distribution Provider that sets transmission line relays according to Requirement R1 criterion 12 shall provide an updated list of the circuits associated with those relays to its Regional Entity at least once each calendar year, with no more than 15 months between reports, to allow the ERO to compile a list of all circuits that have protective relay settings that limit circuit capability.

*Note that Version 6 of PRC-023 becomes effective October 1, 2026.



PDSs by Standard – PRC-023-4*, R6.2

Functional applicability

- PC

Submit to

- NPCC and the Régie through the SSCQ

Submission frequency

- Event driven as per R6.2

Due dates

- Within 30 calendar days of the establishment of the initial list and within 30 days of any change to the list.

See form ([LINK](#))

- Detailed on the following slides

Provide the list of circuits to all Regional Entities, Reliability Coordinators, Transmission Owners, Generator Owners, and Distribution Providers within its Planning Coordinator area within 30 calendar days of the establishment of the initial list and within 30 calendar days of any changes to that list.

*Note that Version 6 of PRC-023 becomes effective October 1, 2026.



PRC-023-4*, R5 and R6.2 Form – Instructions Tab

Registered Entity Instructions
PRC-023 Transmission Relay Loadability Form
Reporting instructions for requirements R5 or R6.2
<ul style="list-style-type: none">• The Registered Entity will use the Transmission Relay Loadability Form for requirements R5 or R6.2 per the annual Quebec Reliability Standards Compliance Monitoring and Enforcement Program Implementation Plan (QCMEP IP).• If another reporting form has been created for internal use, please contact NPCC and the Régie prior to submittal.
Submission Frequency per PRC-023
R5 Annually, at least once each calendar year, with no more than 15 months between reports
R6.2 Per Standard, within 30 calendar days of the establishment of the initial list and within 30 days of any changes to list
Guidelines When completing the Transmission Relay Loadability Form please complete all fields. There are unique fields for requirements R5 and R6.2. If unsure of how to complete form, please contact NPCC and the Régie for clarifications. If another submittal form has been created for internal use, please contact NPCC and the Régie prior to submittal to ensure content meets the Requirement.
Instructions <ol style="list-style-type: none">1. Complete the general information section of the Transmission Relay Loadability Form.2. Complete the Transmission Relay Loadability Form transmission line specifics for the applicable Requirement (R5 or R6.2).3. If needed, contact the Régie (secretariat-PSCAQ@regie-energie.qc.ca) to create a new mandate in the SSCQ for this submission.3. Upload the Transmission Relay Loadability Form to the appropriate mandate in the SSCQ prior to any reporting deadlines. Notify NPCC and the Régie of it's upload. Entity developed forms may require discussion with NPCC prior to submittal.

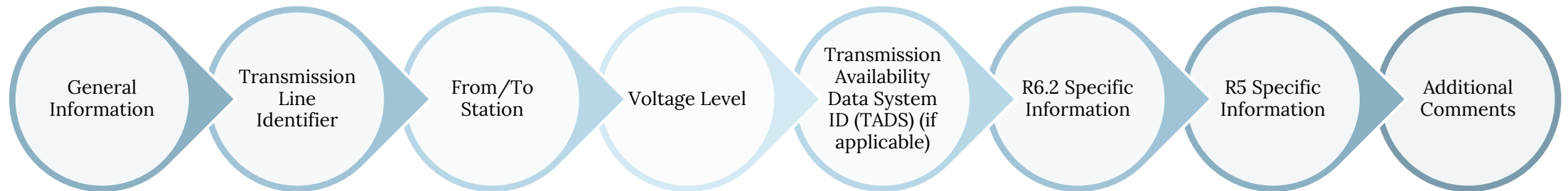
*Note that Version 6 of PRC-023 becomes effective October 1, 2026.

Source: [PRC-023 Form](#)





PRC-023-4*, R5 and R6.2 Form – Transmission Relay Loadability Form



*Note that Version 6 of PRC-023 becomes effective October 1, 2026.



PDSs by Standard – PRC-028-1*, R8

Functional applicability

- GO

Submit to

- NPCC and the Régie through the SSCQ

Submission frequency

- Event driven as per R8

Due dates

- Within 90 calendar days of the discovery of a failure of the recording capability for the sequence of events recording (SER), fault recording (FR), or dynamic Disturbance recording (DDR) data

See form ([LINK](#))

- Details on the following slides

Each Generator Owner shall, within 90 calendar days of the discovery of a failure of the recording capability for the SER, FR or DDR data, either:

- Restore the recording capability, or
- Submit a Corrective Action Plan (CAP) to the Regional Entity and implement it.

*Note that PRC-028-1 becomes effective July 1, 2026.



PRC-028-1*, R8 Form – Instructions Tab

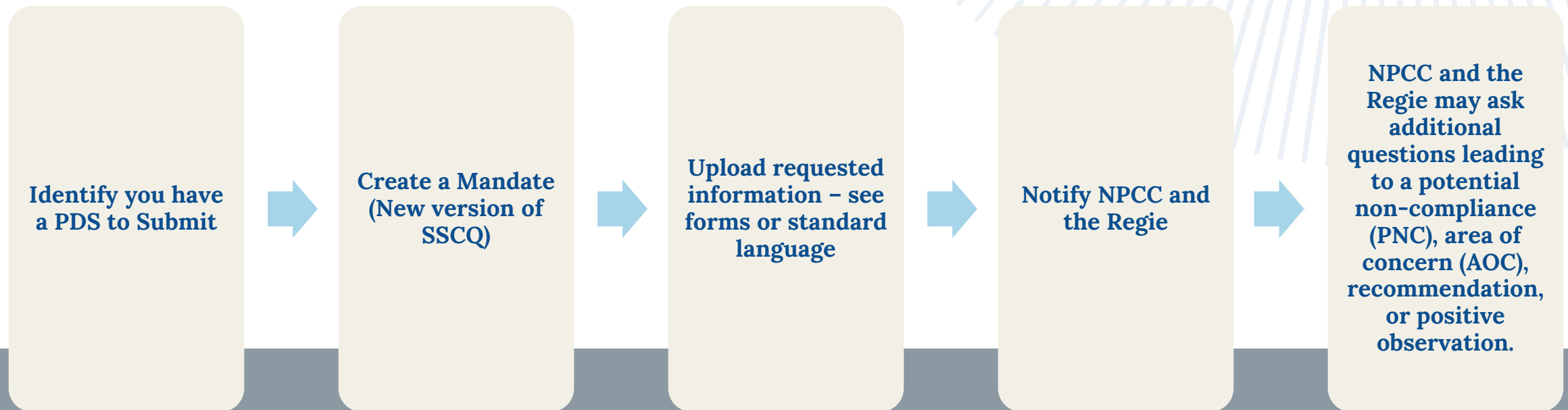
Registered Entity Instructions
PRC-028 R8 Corrective Action Plan Event Driven Reporting Instructions
PRC-028 R8 requires that Generator Owners shall, upon discovery of a failure of the recording capability for the SER, FR, or DDR data, either: <ul style="list-style-type: none">• Restore the recording capability within 90 calendar days, or• Submit a Corrective Action Plan (CAP) to the Regional Entity within 90 calendar days and then implement it according CAP timeline. This form and the Corrective Action Plan itself will be submitted via the SSCQ. The Registered Entity will be required to maintain all relevant evidence of the loss and subsequent re-establishment of recording capability. Registered Entities should provide all relevant information listed. Contact NPCC and the Régie with any questions.
Submission Frequency: Event driven Requirement within 90 calendar days of discovery of a failure of the recording capability
Instructions <ol style="list-style-type: none">1. Complete the Corrective Action Plan tab.2. If necessary, contact the Régie (secretariat-PSCAQ@Régie-energie.qc.ca) to create a new mandate in the SSCQ for this submission.3. Submit this form to the SSCQ within the deadlines listed above and notify NPCC and the Régie of its upload.4. Retain all relevant evidence of the loss and subsequent re-establishment of recording capability.

Source: [PRC-028, R8 Form](#)

*Note that PRC-028-1 becomes effective July 1, 2026.



Submitting a PDS



Resources

Forms Webpage

<https://www.regie-energie.qc.ca/fr/entites-visees/surveillance-conformite/forms>

2026 CMEP IP

<https://www.regie-energie.qc.ca/fr/entites-visees/surveillance-conformite/implementation-plan>

SSCQ

<https://sscq.regie-energie.qc.ca/>





Questions?

Contact Us: npcc.org/contact
secretariat-PSCAQ@regie-energie.qc.ca

Karie Barczak

Senior Compliance Engineer

Laurentia Dumitrescu, ing.

Spécialiste en régulation économique, Régie de l'énergie